


Product datasheet

Anti-EML4 antibody ab86062

[1 References](#) [3 Images](#)

Overview

Product name	Anti-EML4 antibody
Description	Rabbit polyclonal to EML4
Host species	Rabbit
Tested applications	Suitable for: WB, IP, IHC-P
Species reactivity	Reacts with: Human Predicted to work with: Rabbit, Guinea pig, Chimpanzee, Rhesus monkey, Gorilla, Orangutan 
Immunogen	Synthetic peptide, corresponding to a region between residues 150 and 200 of human EML4 (NP_061936.2)
Positive control	HeLa whole cell lysate.
General notes	<p>The Life Science industry has been in the grips of a reproducibility crisis for a number of years. Abcam is leading the way in addressing this with our range of recombinant monoclonal antibodies and knockout edited cell lines for gold-standard validation. Please check that this product meets your needs before purchasing.</p> <p>If you have any questions, special requirements or concerns, please send us an inquiry and/or contact our Support team ahead of purchase. Recommended alternatives for this product can be found below, along with publications, customer reviews and Q&As</p>

Properties

Form	Liquid
Storage instructions	Shipped at 4°C. Upon delivery aliquot and store at -20°C. Avoid freeze / thaw cycles.
Storage buffer	pH: 6.8 Preservative: 0.09% Sodium azide Constituents: 0.1% BSA, Tris buffered saline
Purity	Immunogen affinity purified
Purification notes	ab86062 was affinity purified using an epitope specific to EML4 immobilized on solid support.
Clonality	Polyclonal
Isotype	IgG

Applications

The Abpromise guarantee

Our **Abpromise guarantee** covers the use of ab86062 in the following tested applications.

The application notes include recommended starting dilutions; optimal dilutions/concentrations should be determined by the end user.

Application	Abreviews	Notes
WB		1/2000 - 1/10000. Detects a band of approximately 120 kDa (predicted molecular weight: 109 kDa).
IP		Use at 2-5 µg/mg of lysate.
IHC-P		1/100 - 1/500. Perform heat mediated antigen retrieval with citrate buffer pH 6 before commencing with IHC staining protocol.

Target

Function

May modify the assembly dynamics of microtubules, such that microtubules are slightly longer, but more dynamic.

Sequence similarities

Belongs to the WD repeat EMAP family.
Contains 9 WD repeats.

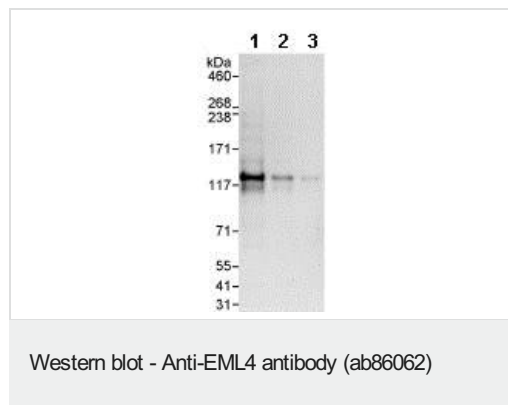
Developmental stage

Strongly overexpressed during mitosis.

Cellular localization

Cytoplasm > cytoskeleton.

Images



All lanes : Anti-EML4 antibody (ab86062) at 1/0.04 dilution

Lane 1 : HeLa whole cell lysate at 50 µg

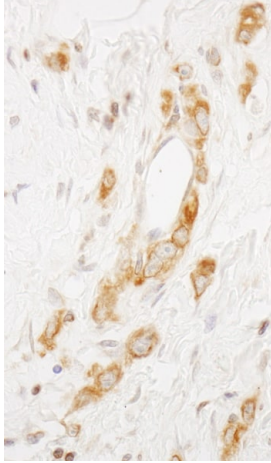
Lane 2 : HeLa whole cell lysate at 15 µg

Lane 3 : HeLa whole cell lysate at 5 µg

Predicted band size: 109 kDa

Observed band size: 120 kDa

Exposure time: 30 seconds



Immunohistochemistry (Formalin/PFA-fixed paraffin-embedded sections) analysis of human stomach cancer tissue labelling EML4 with ab86062 at 1/200 (1µg/ml). Detection: DAB.

Immunohistochemistry (Formalin/PFA-fixed paraffin-embedded sections) - Anti-EML4 antibody (ab86062)



Detection of EML4 by Western Blot of Immunoprecipitate.
ab86062 at 0.4µg/ml staining EML4 in HeLa whole cell lysate immunoprecipitated using ab86062 at 3µg/mg lysate (1 mg/IP; 20% of IP loaded/lane).
Detection: Chemiluminescence with exposure time of 10 seconds.

Immunoprecipitation - Anti-EML4 antibody (ab86062)

Please note: All products are "FOR RESEARCH USE ONLY. NOT FOR USE IN DIAGNOSTIC PROCEDURES"

Our Abpromise to you: Quality guaranteed and expert technical support

- Replacement or refund for products not performing as stated on the datasheet
- Valid for 12 months from date of delivery
- Response to your inquiry within 24 hours
- We provide support in Chinese, English, French, German, Japanese and Spanish
- Extensive multi-media technical resources to help you
- We investigate all quality concerns to ensure our products perform to the highest standards

If the product does not perform as described on this datasheet, we will offer a refund or replacement. For full details of the Abpromise, please visit <https://www.abcam.com/abpromise> or contact our technical team.

Terms and conditions

- Guarantee only valid for products bought direct from Abcam or one of our authorized distributors