

Product datasheet

Anti-EMR1/ADGRE1 (F4/80) antibody [EPR23225-94] ab254293

Recombinant RabMAb

[1 References](#) [7 Images](#)

Overview

Product name	Anti-EMR1/ADGRE1 (F4/80) antibody [EPR23225-94]
Description	Rabbit monoclonal [EPR23225-94] to EMR1/ADGRE1
Host species	Rabbit
Tested applications	Suitable for: ICC/IF, WB, IHC-P, Flow Cyt Unsuitable for: IP
Species reactivity	Reacts with: Human
Immunogen	Recombinant fragment. This information is proprietary to Abcam and/or its suppliers.
Positive control	WB: Human spleen, colon and stomach lysates. IHC-P: Human gastric cancer and colon tissues. ICC/IF: HEK-293 cells transfected with myc-tagged EMR1/ADGRE1 expression vector. Flow Cyt: HEK-293 cells transfected with myc-tagged EMR1/ADGRE1 expression vector.
General notes	This product is a recombinant monoclonal antibody, which offers several advantages including: <ul style="list-style-type: none"> - High batch-to-batch consistency and reproducibility - Improved sensitivity and specificity - Long-term security of supply - Animal-free production For more information see here . Our RabMAb [®] technology is a patented hybridoma-based technology for making rabbit monoclonal antibodies. For details on our patents, please refer to RabMAb[®] patents .

Properties

Form	Liquid
Storage instructions	Shipped at 4°C. Store at +4°C short term (1-2 weeks). Upon delivery aliquot. Store at -20°C long term. Avoid freeze / thaw cycle.
Storage buffer	pH: 7.2 Preservative: 0.01% Sodium azide Constituents: PBS, 0.05% BSA, 40% Glycerol
Purity	Protein A purified

Clonality Monoclonal
Clone number EPR23225-94
Isotype IgG

Applications

The Abpromise guarantee Our **Abpromise guarantee** covers the use of ab254293 in the following tested applications. The application notes include recommended starting dilutions; optimal dilutions/concentrations should be determined by the end user.

Application	Abreviews	Notes
ICC/IF		1/100.
WB		1/1000. Detects a band of approximately 100 kDa (predicted molecular weight: 97 kDa).
IHC-P		1/16000. Perform heat mediated antigen retrieval with Tris/EDTA buffer pH 9.0 before commencing with IHC staining protocol.
Flow Cyt		1/500.

Application notes Is unsuitable for IP.

Target

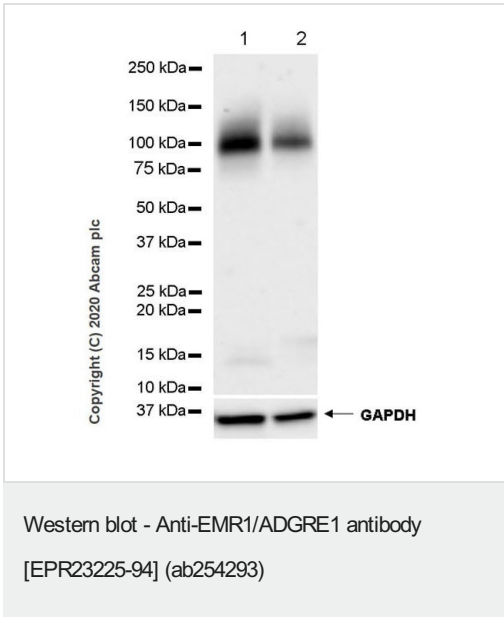
Function Orphan receptor involved in cell adhesion and probably in cell-cell interactions specifically involving cells of the immune system. May play a role in regulatory T-cells (Treg) development.

Tissue specificity Expression is restricted to eosinophils.

Sequence similarities Belongs to the G-protein coupled receptor 2 family. Adhesion G-protein coupled receptor (ADGR) subfamily.
Contains 6 EGF-like domains.
Contains 1 GPS domain.

Cellular localization Cell membrane.

Images



All lanes : Anti-EMR1/ADGRE1 (F4/80) antibody [EPR23225-94] (ab254293) at 1/1000 dilution

Lane 1 : Human colon tissue lysate

Lane 2 : Human stomach tissue lysate

Lysates/proteins at 40 µg per lane.

Secondary

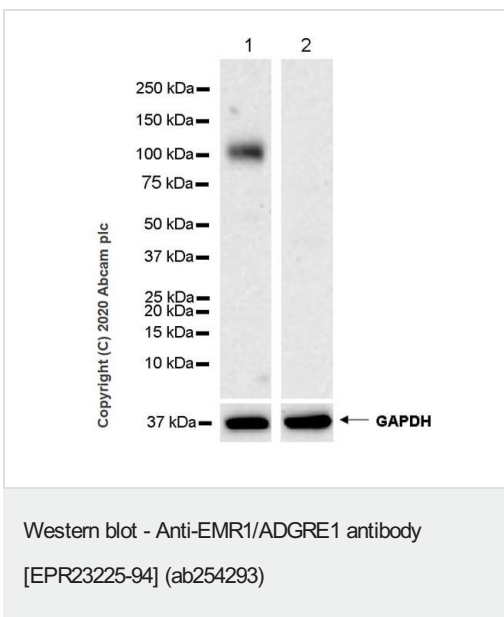
All lanes : Goat Anti-Rabbit IgG, (H+L), Peroxidase conjugated (**ab97051**) at 1/100000 dilution

Predicted band size: 97 kDa

Observed band size: 100 kDa

Blocking and diluting buffer and concentration: 5% NFD/MTBST.

Exposure time: 70 seconds.



All lanes : Anti-EMR1/ADGRE1 (F4/80) antibody [EPR23225-94] (ab254293) at 1/1000 dilution

Lane 1 : Human spleen tissue lysate

Lane 2 : Human brain tissue lysate

Lysates/proteins at 20 µg per lane.

Secondary

All lanes : Goat Anti-Rabbit IgG, (H+L), Peroxidase conjugated (**ab97051**) at 1/100000 dilution

Predicted band size: 97 kDa

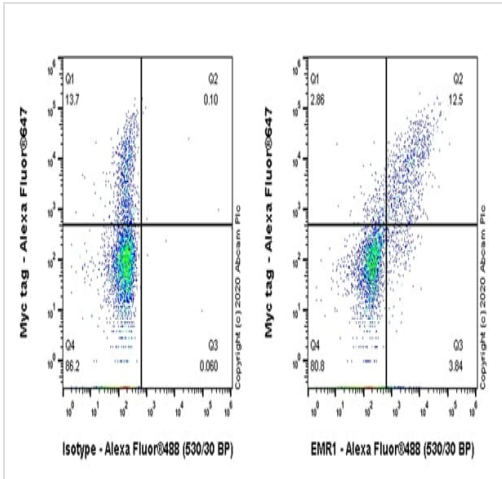
Observed band size: 100 kDa

Blocking and diluting buffer and concentration: 5% NFDN/TBST.

This blot was developed using a higher sensitivity ECL substrate.

Negative control: Human brain (PMID:17823986).

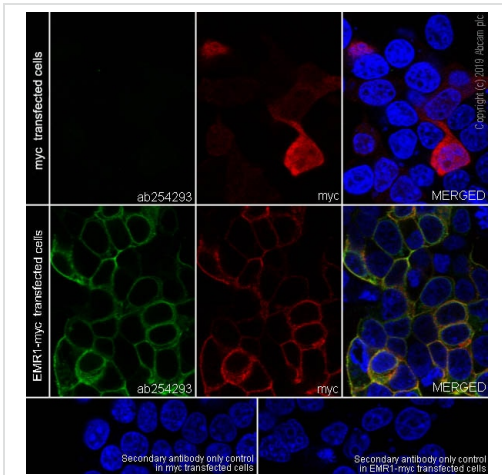
Exposure time: 3 minutes.



Flow Cytometry - Anti-EMR1/ADGRE1 antibody
[EPR23225-94] (ab254293)

Flow cytometric analysis of 2% paraformaldehyde-fixed, 0.1% Tween-20 permeabilized HEK-293T (transfected with myc tagged EMR1/ADGRE1 construct) cells labelling EMR1/ADGRE1 with ab254293 at 1/500 (Right) compared with a Rabbit monoclonal IgG (**ab172730**) (Left). A Goat anti rabbit IgG (Alexa Fluor[®] 488, **ab150077**) at 1/2000 was used as the secondary antibody.

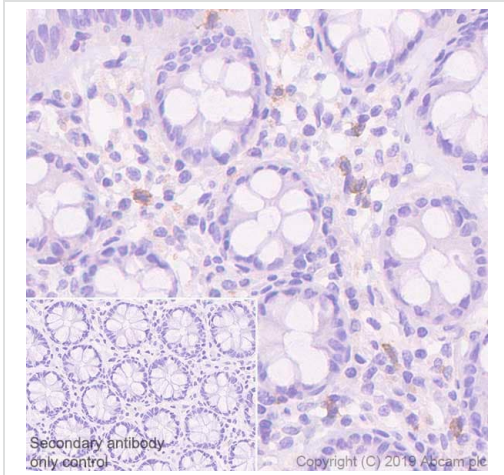
Cells were surface stained with isotype control (**ab172730**) or ab254293. Then fixed with 2% PFA for 10min followed by intracellularly stained with anti-myc tag conjugated to Alexa Fluor[®] 647.



Immunocytochemistry/ Immunofluorescence - Anti-EMR1/ADGRE1 antibody [EPR23225-94] (ab254293)

Immunofluorescent analysis of 4% Paraformaldehyde-fixed, 0.1% TritonX-100 permeabilized HEK-293 cells labelling EMR1/ADGRE1 with ab254293 at 1/100 dilution, followed by antibody at 1/1000 dilution (Green). Confocal image showing positive staining in HEK-293 cell line transfected with myc-tagged EMR1/ADGRE1 expression vector. 2233S Myc-Tag (9B11) Mouse mAb (Alexa Fluor[®] 647 Conjugate) was used to counterstain tubulin at 1/200 dilution (Red). The Nuclear counterstain was DAPI (Blue).

Secondary antibody only control: Secondary antibody is at 1000 dilution.

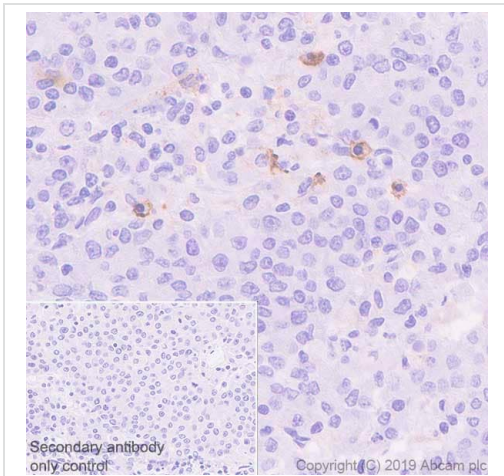


Immunohistochemistry (Formalin/PFA-fixed paraffin-embedded sections) - Anti-EMR1/ADGRE1 antibody [EPR23225-94] (ab254293)

Immunohistochemical analysis of paraffin-embedded Human colon tissue labeling EMR1/ADGRE1 with ab254293 at 1/16000 dilution followed by a ready to use Rabbit specific IHC polymer detection kit HRP/DAB (**ab209101**). Positive staining in eosinophils of human colon (PMID:17823986).The section was incubated with ab254293 for 10 mins at room temperature. The immunostaining was performed on a Leica Biosystems BOND[®] RX instrument Counterstained with Hematoxylin.

Secondary antibody only control: Secondary antibody is a ready to use Rabbit specific IHC polymer detection kit HRP/DAB (**ab209101**).

Heat mediated antigen retrieval with Tris-EDTA buffer (pH 9.0, epitope retrieval solution2) for 20 mins



Immunohistochemistry (Formalin/PFA-fixed paraffin-embedded sections) - Anti-EMR1/ADGRE1 antibody [EPR23225-94] (ab254293)

Immunohistochemical analysis of paraffin-embedded Human gastric cancer tissue labeling EMR1/ADGRE1 with ab254293 at 1/16000 dilution followed by a ready to use Rabbit specific IHC polymer detection kit HRP/DAB (**ab209101**). Positive staining in eosinophils of human gastric cancer (PMID:17823986).The section was incubated with ab254293 for 10 mins at room temperature. The immunostaining was performed on a Leica Biosystems BOND[®] RX instrument Counterstained with Hematoxylin.

Secondary antibody only control: Secondary antibody is a ready to use Rabbit specific IHC polymer detection kit HRP/DAB (**ab209101**).

Heat mediated antigen retrieval with Tris-EDTA buffer (pH 9.0, epitope retrieval solution2) for 20 mins

Why choose a recombinant antibody?



Research with confidence
Consistent and reproducible results



Long-term and scalable supply
Recombinant technology



Success from the first experiment
Confirmed specificity



Ethical standards compliant
Animal-free production

Anti-EMR1/ADGRE1 antibody [EPR23225-94]
(ab254293)

Please note: All products are "FOR RESEARCH USE ONLY. NOT FOR USE IN DIAGNOSTIC PROCEDURES"

Our Abpromise to you: Quality guaranteed and expert technical support

- Replacement or refund for products not performing as stated on the datasheet
- Valid for 12 months from date of delivery
- Response to your inquiry within 24 hours
- We provide support in Chinese, English, French, German, Japanese and Spanish
- Extensive multi-media technical resources to help you
- We investigate all quality concerns to ensure our products perform to the highest standards

If the product does not perform as described on this datasheet, we will offer a refund or replacement. For full details of the Abpromise, please visit <https://www.abcam.com/abpromise> or contact our technical team.

Terms and conditions

- Guarantee only valid for products bought direct from Abcam or one of our authorized distributors