


## Product datasheet

# Anti-ENC1 antibody [EPR5406(B)] ab124902

Recombinant RabMAb

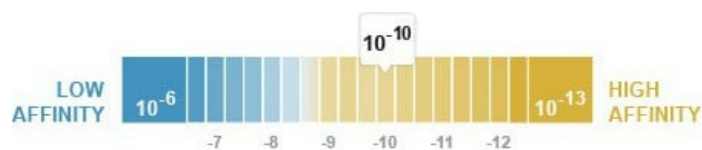
★★★★☆ [2 Abreviews](#) [3 References](#) [4 Images](#)

### Overview

<b>Product name</b>	Anti-ENC1 antibody [EPR5406(B)]
<b>Description</b>	Rabbit monoclonal [EPR5406(B)] to ENC1
<b>Host species</b>	Rabbit
<b>Tested applications</b>	<b>Suitable for:</b> WB, IHC-P <b>Unsuitable for:</b> IP
<b>Species reactivity</b>	<b>Reacts with:</b> Human <b>Predicted to work with:</b> Mouse, Rat 
<b>Immunogen</b>	Synthetic peptide within Human ENC1 aa 550-650. The exact sequence is proprietary.
<b>Positive control</b>	Human fetal brain lysate; Human brain tissue
<b>General notes</b>	This product is a recombinant monoclonal antibody, which offers several advantages including: <ul style="list-style-type: none"> <li>- High batch-to-batch consistency and reproducibility</li> <li>- Improved sensitivity and specificity</li> <li>- Long-term security of supply</li> <li>- Animal-free production</li> </ul> For more information <a href="#">see here</a> . Our RabMAb <sup>®</sup> technology is a patented hybridoma-based technology for making rabbit monoclonal antibodies. For details on our patents, please refer to <a href="#">RabMAb<sup>®</sup> patents</a> .

### Properties

<b>Form</b>	Liquid
<b>Storage instructions</b>	Shipped at 4°C. Store at -20°C. Stable for 12 months at -20°C.
<b>Dissociation constant (K<sub>D</sub>)</b>	K <sub>D</sub> = 1.03 x 10 <sup>-10</sup> M



[Learn more about K<sub>D</sub>](#)

<b>Storage buffer</b>	pH: 7.20
-----------------------	----------

Preservative: 0.05% Sodium azide  
Constituents: 40% Glycerol (glycerin, glycerine), 9.85% Tris glycine, 50% Tissue culture supernatant

**Purity** Tissue culture supernatant  
**Clonality** Monoclonal  
**Clone number** EPR5406(B)  
**Isotype** IgG

## Applications

**The Abpromise guarantee** Our **Abpromise guarantee** covers the use of ab124902 in the following tested applications. The application notes include recommended starting dilutions; optimal dilutions/concentrations should be determined by the end user.

Application	Abreviews	Notes
WB		1/1000 - 1/10000. Detects a band of approximately 66 kDa (predicted molecular weight: 66 kDa).
IHC-P		1/100 - 1/250. Perform heat mediated antigen retrieval before commencing with IHC staining protocol.

**Application notes** Is unsuitable for IP.

## Target

**Function** Actin-binding protein involved in the regulation of neuronal process formation and in differentiation of neural crest cells. May be down-regulated in neuroblastoma tumors. Substrate-specific adapter of an E3 ubiquitin-protein ligase complex which mediates the ubiquitination and subsequent proteasomal degradation of target proteins.

**Tissue specificity** Detected in fetal brain tissue, moderate expression in fetal heart, lung and kidney. Highly expressed in adult brain, particularly high in the hippocampus and amygdala, and spinal chord. Detectable in adult pancreas.

**Pathway** Protein modification; protein ubiquitination.

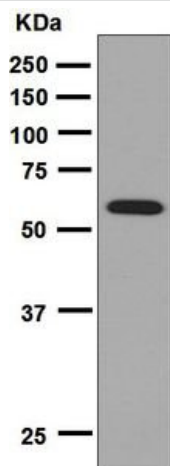
**Sequence similarities** Contains 1 BTB (POZ) domain.  
Contains 6 Kelch repeats.

**Developmental stage** Dramatically up-regulated upon neuronal differentiation.

**Post-translational modifications** Ubiquitinated and probably targeted for proteasome-independent degradation.

**Cellular localization** Nucleus matrix. Cytoplasm > cytoskeleton.

## Images



Western blot - Anti-ENC1 antibody [EPR5406(B)] (ab124902)

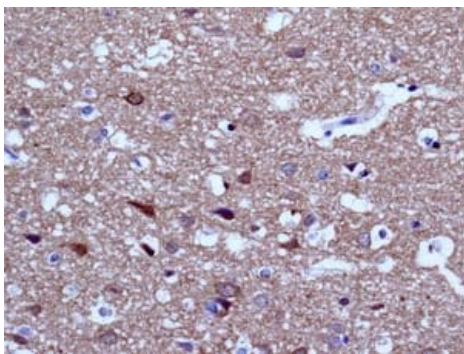
Anti-ENC1 antibody [EPR5406(B)] (ab124902) at 1/1000 dilution + Human brain fetal lysate at 10  $\mu$ g

### Secondary

HRP labelled goat anti-rabbit at 1/2000 dilution

**Predicted band size:** 66 kDa

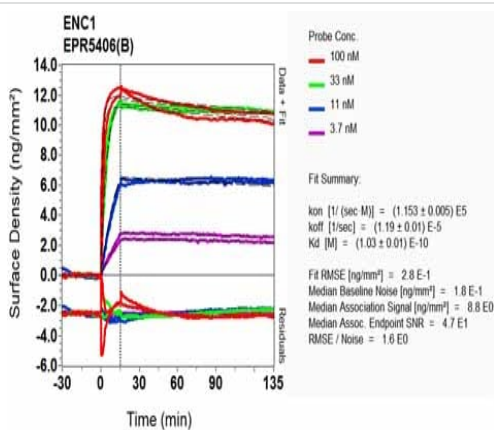
**Observed band size:** 66 kDa



Immunohistochemistry (Formalin/PFA-fixed paraffin-embedded sections) - Anti-ENC1 antibody [EPR5406(B)] (ab124902)

ab124902, at 1/100 dilution, staining ENC1 in paraffin-embedded Human brain tissue by Immunohistochemistry.

Perform heat mediated antigen retrieval before commencing with IHC staining protocol.



OIR-D Scanning - Anti-ENC1 antibody [EPR5406(B)] (ab124902)

Equilibrium dissociation constant ( $K_D$ )

Learn more about  $K_D$

[Click here to learn more about  \$K\_D\$](#)

## Why choose a recombinant antibody?



**Research with confidence**  
Consistent and reproducible results



**Long-term and scalable supply**  
Recombinant technology



**Success from the first experiment**  
Confirmed specificity



**Ethical standards compliant**  
Animal-free production

Anti-ENC1 antibody [EPR5406(B)] (ab124902)

**Please note:** All products are "FOR RESEARCH USE ONLY. NOT FOR USE IN DIAGNOSTIC PROCEDURES"

### Our Abpromise to you: Quality guaranteed and expert technical support

---

- Replacement or refund for products not performing as stated on the datasheet
- Valid for 12 months from date of delivery
- Response to your inquiry within 24 hours
- We provide support in Chinese, English, French, German, Japanese and Spanish
- Extensive multi-media technical resources to help you
- We investigate all quality concerns to ensure our products perform to the highest standards

If the product does not perform as described on this datasheet, we will offer a refund or replacement. For full details of the Abpromise, please visit <https://www.abcam.com/abpromise> or contact our technical team.

### Terms and conditions

---

- Guarantee only valid for products bought direct from Abcam or one of our authorized distributors