

## Product datasheet


# Anti-Endo G antibody [EP1665Y] ab76122

**KO VALIDATED** Recombinant RabMAb<sup>®</sup>

[6 References](#) [3 Images](#)

### Overview

---

<b>Product name</b>	Anti-Endo G antibody [EP1665Y]
<b>Description</b>	Rabbit monoclonal [EP1665Y] to Endo G
<b>Host species</b>	Rabbit
<b>Tested applications</b>	<b>Suitable for:</b> WB <b>Unsuitable for:</b> Flow Cyt, ICC/IF, IHC-P or IP
<b>Species reactivity</b>	<b>Reacts with:</b> Mouse, Human <b>Predicted to work with:</b> Rat 
<b>Immunogen</b>	Synthetic peptide within Human Endo G (C terminal). The exact sequence is proprietary.
<b>Positive control</b>	HepG2 whole cell lysate ( <a href="#">ab7900</a> )
<b>General notes</b>	<p>This product is a recombinant monoclonal antibody, which offers several advantages including:</p> <ul style="list-style-type: none"><li>- High batch-to-batch consistency and reproducibility</li><li>- Improved sensitivity and specificity</li><li>- Long-term security of supply</li><li>- Animal-free production</li></ul> <p>For more information <a href="#">see here</a>.</p> <p>Our RabMAb<sup>®</sup> technology is a patented hybridoma-based technology for making rabbit monoclonal antibodies. For details on our patents, please refer to <a href="#">RabMAb<sup>®</sup> patents</a>.</p>

### Properties

---

<b>Form</b>	Liquid
<b>Storage instructions</b>	Shipped at 4°C. Upon delivery aliquot and store at -20°C. Avoid freeze / thaw cycles.
<b>Storage buffer</b>	pH: 7.20 Preservative: 0.01% Sodium azide Constituents: 9% PBS, 40% Glycerol (glycerin, glycerine), 0.05% BSA, 50% Tissue culture supernatant
<b>Purity</b>	Protein A purified
<b>Clonality</b>	Monoclonal
<b>Clone number</b>	EP1665Y

Isotype

IgG

## Applications

### The Abpromise guarantee

Our **Abpromise guarantee** covers the use of ab76122 in the following tested applications.

The application notes include recommended starting dilutions; optimal dilutions/concentrations should be determined by the end user.

Application	Abreviews	Notes
WB		1/2000 - 1/5000. Detects a band of approximately 35 kDa (predicted molecular weight: 36 kDa).

### Application notes

Is unsuitable for Flow Cyt, ICC/IF, IHC-P or IP.

## Target

### Function

Cleaves DNA at double-stranded (DG)n.(DC)n and at single-stranded (DC)n tracts. In addition to deoxyribonuclease activities, also has ribonuclease (RNase) and RNase H activities. Capable of generating the RNA primers required by DNA polymerase gamma to initiate replication of mitochondrial DNA.

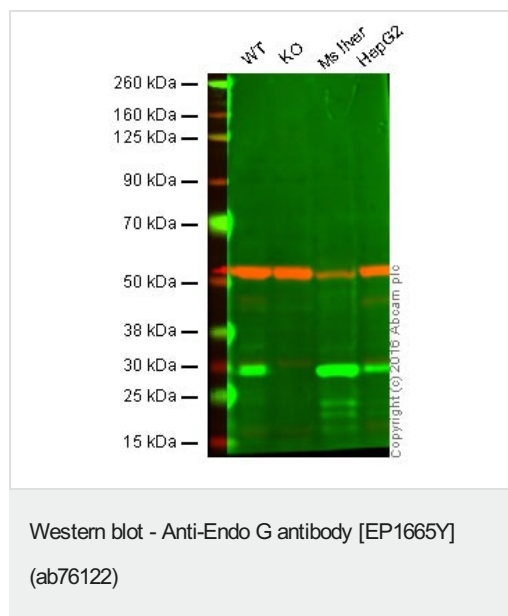
### Sequence similarities

Belongs to the DNA/RNA non-specific endonuclease family.

### Cellular localization

Mitochondrion.

## Images



**Lane 1:** Wild-type HAP1 cell lysate (20 µg)

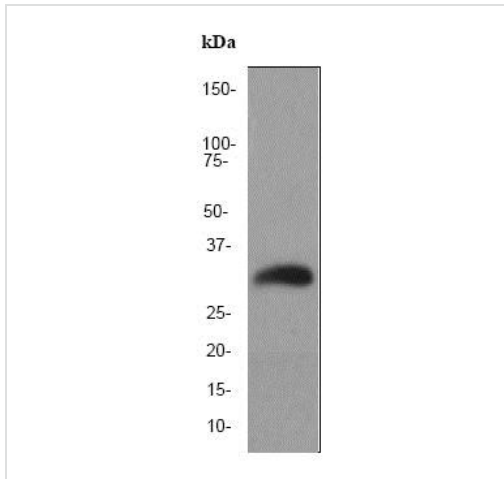
**Lane 2:** Endo G HAP1 cell lysate (20 µg)

**Lane 3:** Mouse liver tissue lysate (20 µg)

**Lane 4:** HepG2 cell lysate (20 µg)

**Lanes 1 - 4:** Merged signal (red and green). Green - ab76122 observed at 29 kDa. Red - loading control, **ab7291**, observed at 52 kDa.

ab76122 was shown to specifically react with Endo G when Endo G knockout samples were used. Wild-type and Endo G knockout samples were subjected to SDS-PAGE. ab76122 and **ab7291** (loading control to alpha tubulin) were diluted 1/2000 and 1/10000 respectively and incubated overnight at 4°C. Blots were developed with Goat anti-Rabbit IgG H&L (IRDye® 800CW) preadsorbed (**ab216773**) and Goat anti-Mouse IgG H&L (IRDye® 680RD) preadsorbed (**ab216776**) secondary antibodies at 1/10000 dilution for 1 h at room temperature before imaging.



Western blot - Anti-Endo G antibody [EP1665Y] (ab76122)

Anti-Endo G antibody [EP1665Y] (ab76122) at 1/2000 dilution + HepG2 cell lysate at 10 µg

**Secondary**





HRP labelled goat anti-rabbit at 1/1000 dilution

Developed using the ECL technique.

**Predicted band size:** 36 kDa

**Observed band size:** 35 kDa

Why choose a recombinant antibody?

 <p><b>Research with confidence</b> Consistent and reproducible results</p>	 <p><b>Long-term and scalable supply</b> Recombinant technology</p>
 <p><b>Success from the first experiment</b> Confirmed specificity</p>	 <p><b>Ethical standards compliant</b> Animal-free production</p>

Anti-Endo G antibody [EP1665Y] (ab76122)

**Please note:** All products are "FOR RESEARCH USE ONLY. NOT FOR USE IN DIAGNOSTIC PROCEDURES"

**Our Abpromise to you: Quality guaranteed and expert technical support**

- Replacement or refund for products not performing as stated on the datasheet
- Valid for 12 months from date of delivery
- Response to your inquiry within 24 hours
- We provide support in Chinese, English, French, German, Japanese and Spanish
- Extensive multi-media technical resources to help you
- We investigate all quality concerns to ensure our products perform to the highest standards

If the product does not perform as described on this datasheet, we will offer a refund or replacement. For full details of the Abpromise, please visit <https://www.abcam.com/abpromise> or contact our technical team.

## Terms and conditions

---

- Guarantee only valid for products bought direct from Abcam or one of our authorized distributors