

Product datasheet

Anti-Endomucin antibody [V.7C7.1] ab106100

★★★★★ [9 Abreviews](#) [41 References](#) [1 Image](#)

Overview

Product name	Anti-Endomucin antibody [V.7C7.1]
Description	Rat monoclonal [V.7C7.1] to Endomucin
Host species	Rat
Tested applications	Suitable for: IHC-Fr, IHC-P, IP, Flow Cyt, WB, IHC - Wholemount, ICC/IF Unsuitable for: FuncS
Species reactivity	Reacts with: Mouse, Human
Immunogen	Mouse Endomucin-IgG fusion protein
General notes	<p>The Life Science industry has been in the grips of a reproducibility crisis for a number of years. Abcam is leading the way in addressing this with our range of recombinant monoclonal antibodies and knockout edited cell lines for gold-standard validation. Please check that this product meets your needs before purchasing.</p> <p>If you have any questions, special requirements or concerns, please send us an inquiry and/or contact our Support team ahead of purchase. Recommended alternatives for this product can be found below, along with publications, customer reviews and Q&As</p>

Properties

Form	Liquid
Storage instructions	Shipped at 4°C. Upon delivery aliquot and store at -20°C. Avoid freeze / thaw cycles.
Storage buffer	Preservative: 0.02% Sodium azide Constituents: 0.1% BSA, PBS
Purity	Protein G purified
Purification notes	0.2 µm filtered solution
Clonality	Monoclonal
Clone number	V.7C7.1
Isotype	IgG2a

Applications

The **Abpromise guarantee** Our **Abpromise guarantee** covers the use of ab106100 in the following tested applications.

The application notes include recommended starting dilutions; optimal dilutions/concentrations should be determined by the end user.

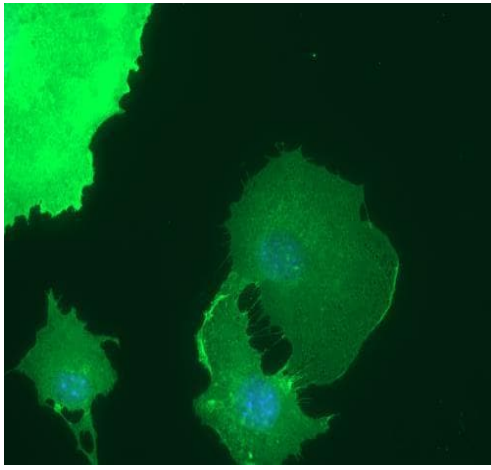
Application	Abreviews	Notes
IHC-Fr		Use at an assay dependent concentration.
IHC-P	★★★★★ (4)	Use at an assay dependent concentration.
IP		Use at an assay dependent concentration.
Flow Cyt		Use at an assay dependent concentration. ab18450 - Rat monoclonal IgG2a, is suitable for use as an isotype control with this antibody.
WB		Use at an assay dependent concentration.
IHC - Wholemount	★★★★★ (1)	Use at an assay dependent concentration.
ICC/IF	★★★★★ (1)	Use a concentration of 1 µg/ml.

Application notes Is unsuitable for FuncS.

Target

Function	Endothelial sialomucin, also called endomucin or mucin-like sialoglycoprotein, which interferes with the assembly of focal adhesion complexes and inhibits interaction between cells and the extracellular matrix.
Tissue specificity	Expressed in heart, kidney and lung.
Post-translational modifications	Highly O-glycosylated. Sialic acid-rich glycoprotein.
Cellular localization	Secreted and Cell membrane. Membrane. Consistently localized to the plasma membrane and less abundantly to Golgi-like perinuclear stacks.

Images



Immuno fluorescence staining of bEND3 cells with ab106100 at a concentration of 1 µg/ml.

Immunocytochemistry/ Immunofluorescence - Anti-Endomucin antibody [V.7C7.1] (ab106100)

Please note: All products are "FOR RESEARCH USE ONLY. NOT FOR USE IN DIAGNOSTIC PROCEDURES"

Our Abpromise to you: Quality guaranteed and expert technical support

- Replacement or refund for products not performing as stated on the datasheet
- Valid for 12 months from date of delivery
- Response to your inquiry within 24 hours
- We provide support in Chinese, English, French, German, Japanese and Spanish
- Extensive multi-media technical resources to help you
- We investigate all quality concerns to ensure our products perform to the highest standards

If the product does not perform as described on this datasheet, we will offer a refund or replacement. For full details of the Abpromise, please visit <https://www.abcam.com/abpromise> or contact our technical team.

Terms and conditions

- Guarantee only valid for products bought direct from Abcam or one of our authorized distributors