

Anti-Endothelial Cell antibody [RECA-1] ab9774

★★★★★ [19 Abreviews](#) [103 References](#) [1 Image](#)

Overview

Product name	Anti-Endothelial Cell antibody [RECA-1]
Description	Mouse monoclonal [RECA-1] to Endothelial Cell
Host species	Mouse
Tested applications	Suitable for: IHC-P
Species reactivity	Reacts with: Rat
Immunogen	Tissue, cells or virus. This information is proprietary to Abcam and/or its suppliers.
Positive control	Rat brain FFPE section (IHC)
General notes	<p>RECA-1 reacts with rat endothelial cell antigen and showed to be reactive with all vascular endothelium in three tested rat strains of different MHC-haplotype; Lewis (TR-11), BN (RT-1n) and OA (RT-1u). RECA-1 recognises a cell surface antigen. The antibody has been successfully applied in staining of viable endothelial cells in vitro, and of vascular endothelium in vivo. No reactivity of RECA-1 was seen with other cells e.g. fibroblasts, leukocytes and non endothelial stromal cells nor with other various tested species other than rat e.g. mouse, rabbit, sheep, goat and human. RECA-1 is a promising antibody for rat endothelial cell studies, and in particular for further defining nature and function of endothelial cell-specific antigens.</p> <p>This antibody clone is manufactured by Abcam. If you require a custom buffer formulation or conjugation for your experiments, please contact orders@abcam.com.</p> <p>The Life Science industry has been in the grips of a reproducibility crisis for a number of years. Abcam is leading the way in addressing this with our range of recombinant monoclonal antibodies and knockout edited cell lines for gold-standard validation. Please check that this product meets your needs before purchasing.</p> <p>If you have any questions, special requirements or concerns, please send us an inquiry and/or contact our Support team ahead of purchase. Recommended alternatives for this product can be found below, along with publications, customer reviews and Q&As</p>

Properties

Form	Liquid
Storage instructions	Shipped at 4°C. Store at +4°C short term (1-2 weeks). Upon delivery aliquot. Store at -20°C long term.
Storage buffer	pH: 7.40

Purity	Preservative: 0.02% Sodium azide Constituents: PBS, 6.97% L-Arginine
Primary antibody notes	Protein G purified RECA-1 reacts with rat endothelial cell antigen and showed to be reactive with all vascular endothelium in three tested rat strains of different MHC-haplotype; Lewis (TR-11), BN (RT-1n) and OA (RT-1u). RECA-1 recognises a cell surface antigen. The antibody has been successfully applied in staining of viable endothelial cells in vitro, and of vascular endothelium in vivo. No reactivity of RECA-1 was seen with other cells e.g. fibroblasts, leukocytes and non endothelial stromal cells nor with other various tested species other than rat e.g. mouse, rabbit, sheep, goat and human. RECA-1 is a promising antibody for rat endothelial cell studies, and in particular for further defining nature and function of endothelial cell-specific antigens.
Clonality	Monoclonal
Clone number	RECA-1
Isotype	IgG1

Applications

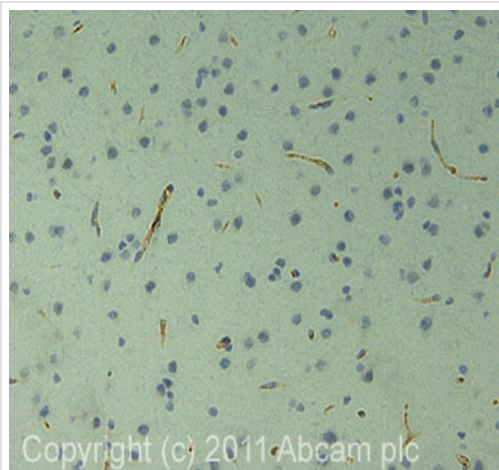
The Abpromise guarantee Our **Abpromise guarantee** covers the use of ab9774 in the following tested applications. The application notes include recommended starting dilutions; optimal dilutions/concentrations should be determined by the end user.

Application	Abreviews	Notes
IHC-P	★★★★★ (5)	Use a concentration of 10 µg/ml.

Target

Relevance The endothelium is a single layer of cells lining various organs and cavities of the body, especially the blood vessels, heart, and lymphatic vessels. Endothelial cells line the entire circulatory system, from the heart to the smallest capillary. Endothelial cells are involved in many aspects of vascular biology, such as vasoconstriction and vasodilation, and hence the control of blood pressure; blood clotting (thrombosis & fibrinolysis); atherosclerosis; formation of new blood vessels (angiogenesis) and inflammation and swelling (oedema). Endothelial cells also control the passage of materials, and the transit of white blood cells, into and out of the bloodstream.

Images



Immunohistochemistry (Formalin/PFA-fixed paraffin-embedded sections) - Anti-Endothelial Cell antibody [RECA-1] (ab9774)

IHC image of Endothelial Cell staining in Rat brain FFPE section, performed on a BondTM system using the standard protocol F. The section was pre-treated using heat mediated antigen retrieval with sodium citrate buffer (pH6, epitope retrieval solution 1) for 20 mins. The section was then incubated with ab9774, 5µg/ml, for 15 mins at room temperature and detected using an HRP conjugated compact polymer system. DAB was used as the chromogen. The section was then counterstained with haematoxylin and mounted with DPX

Please note: All products are "FOR RESEARCH USE ONLY. NOT FOR USE IN DIAGNOSTIC PROCEDURES"

Our Abpromise to you: Quality guaranteed and expert technical support

- Replacement or refund for products not performing as stated on the datasheet
- Valid for 12 months from date of delivery
- Response to your inquiry within 24 hours
- We provide support in Chinese, English, French, German, Japanese and Spanish
- Extensive multi-media technical resources to help you
- We investigate all quality concerns to ensure our products perform to the highest standards

If the product does not perform as described on this datasheet, we will offer a refund or replacement. For full details of the Abpromise, please visit <https://www.abcam.com/abpromise> or contact our technical team.

Terms and conditions

- Guarantee only valid for products bought direct from Abcam or one of our authorized distributors