


# Anti-Endothelin A Receptor/ET-A antibody ab85163

★★★★☆ [4 Abreviews](#) [19 References](#) [2 Images](#)

### Overview

<b>Product name</b>	Anti-Endothelin A Receptor/ET-A antibody
<b>Description</b>	Rabbit polyclonal to Endothelin A Receptor/ET-A
<b>Host species</b>	Rabbit
<b>Tested applications</b>	<b>Suitable for:</b> WB
<b>Species reactivity</b>	<b>Reacts with:</b> Rat <b>Predicted to work with:</b> Mouse, Rabbit, Dog, Human 
<b>Immunogen</b>	Synthetic peptide corresponding to Rat Endothelin A Receptor/ET-A aa 100-200 conjugated to keyhole limpet haemocyanin. (Peptide available as <a href="#">ab93498</a> )
<b>General notes</b>	<p>The Life Science industry has been in the grips of a reproducibility crisis for a number of years. Abcam is leading the way in addressing this with our range of recombinant monoclonal antibodies and knockout edited cell lines for gold-standard validation. Please check that this product meets your needs before purchasing.</p> <p>If you have any questions, special requirements or concerns, please send us an inquiry and/or contact our Support team ahead of purchase. Recommended alternatives for this product can be found below, along with publications, customer reviews and Q&amp;As</p>

### Properties

<b>Form</b>	Liquid
<b>Storage instructions</b>	Shipped at 4°C. Store at +4°C short term (1-2 weeks). Upon delivery aliquot. Store at -20°C or -80°C. Avoid freeze / thaw cycle.
<b>Storage buffer</b>	pH: 7.40 Preservative: 0.02% Sodium azide Constituent: PBS  Batches of this product that have a concentration < 1mg/ml may have BSA added as a stabilising agent. If you would like information about the formulation of a specific lot, please contact our scientific support team who will be happy to help.
<b>Purity</b>	Immunogen affinity purified
<b>Clonality</b>	Polyclonal

Isotype

IgG

## Applications

### The Abpromise guarantee

Our **Abpromise guarantee** covers the use of ab85163 in the following tested applications.

The application notes include recommended starting dilutions; optimal dilutions/concentrations should be determined by the end user.

Application	Abreviews	Notes
WB	★★★★★ (1)	Use a concentration of 1 µg/ml. Detects a band of approximately 46 kDa (predicted molecular weight: 48 kDa).

## Target

### Function

Receptor for endothelin-1. Mediates its action by association with G proteins that activate a phosphatidylinositol-calcium second messenger system. The rank order of binding affinities for ET-A is: ET1 > ET2 >> ET3.

### Tissue specificity

Isoform 1, isoform 3 and isoform 4 are expressed in a variety of tissues, with highest levels in the aorta and cerebellum, followed by lung, atrium and cerebral cortex, lower levels in the placenta, kidney, adrenal gland, duodenum, colon, ventricle and liver but no expression in umbilical vein endothelial cells. Within the placenta, isoform 1, isoform 2, isoform 3 and isoform 4 are expressed in the villi and stem villi vessels.

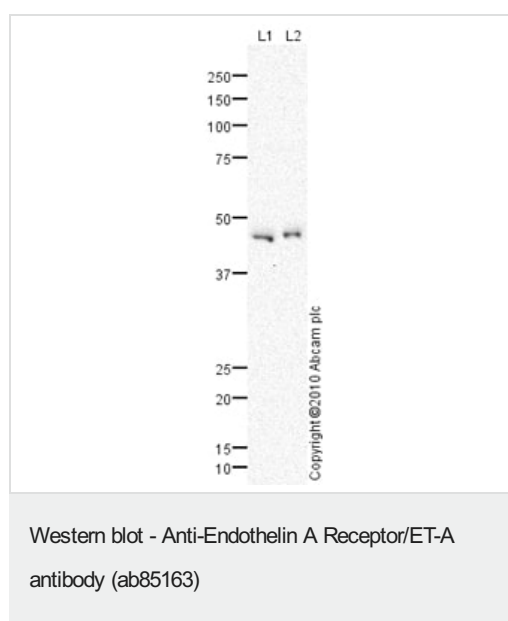
### Sequence similarities

Belongs to the G-protein coupled receptor 1 family. Endothelin receptor subfamily. EDNRA sub-subfamily.

### Cellular localization

Cell membrane.

## Images



**All lanes** : Anti-Endothelin A Receptor/ET-A antibody (ab85163) at 1 µg/ml

**Lane 1** : Brain (Rat) Tissue Lysate

**Lane 2** : Cerebellum Rat Tissue Lysate

Lysates/proteins at 10 µg per lane.

### Secondary

**All lanes** : Goat polyclonal to Rabbit IgG - H&L - Pre-Adsorbed (HRP) at 1/3000 dilution

Developed using the ECL technique.

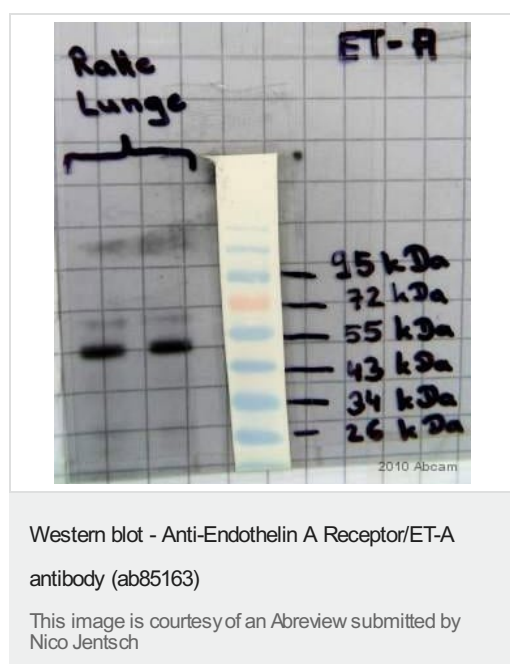
Performed under reducing conditions.

**Predicted band size:** 48 kDa

**Observed band size:** 46 kDa

**Exposure time:** 20 minutes

The band observed at 46 kDa could potentially be a cleaved form of Rat Endothelin-1 receptor precursor, as the target protein contains a 20 amino acid signal peptide, which when removed gives an expected molecular weight of 46 kDa.



**All lanes :** Anti-Endothelin A Receptor/ET-A antibody (ab85163) at 1/250 dilution (in 5% BSA + TBS + 0.1% Tween20 for 12 hours at 4°C)

**All lanes :** Whole tissue lysate of rat lung

Lysates/proteins at 40 µg per lane.

**Secondary**

**All lanes :** An HRP-conjugated Goat anti-rabbit IgG polyclonal at 1/1000 dilution

Developed using the ECL technique.

Performed under non-reducing conditions.

**Predicted band size:** 48 kDa

**Observed band size:** 48 kDa

**Exposure time:** 30 seconds

**Blocking step:** 5% Milk for 1 hour at 23°C

**Please note:** All products are "FOR RESEARCH USE ONLY. NOT FOR USE IN DIAGNOSTIC PROCEDURES"

#### Our Abpromise to you: Quality guaranteed and expert technical support

- Replacement or refund for products not performing as stated on the datasheet
- Valid for 12 months from date of delivery
- Response to your inquiry within 24 hours

- We provide support in Chinese, English, French, German, Japanese and Spanish
- Extensive multi-media technical resources to help you
- We investigate all quality concerns to ensure our products perform to the highest standards

If the product does not perform as described on this datasheet, we will offer a refund or replacement. For full details of the Abpromise, please visit <https://www.abcam.com/abpromise> or contact our technical team.

#### **Terms and conditions**

---

- Guarantee only valid for products bought direct from Abcam or one of our authorized distributors