




## Product datasheet

# Anti-Endothelin B Receptor/ET-B antibody ab117529

★★★★☆ [4 Abreviews](#) [35 References](#) [4 Images](#)

### Overview

---

<b>Product name</b>	Anti-Endothelin B Receptor/ET-B antibody
<b>Description</b>	Rabbit polyclonal to Endothelin B Receptor/ET-B
<b>Host species</b>	Rabbit
<b>Tested applications</b>	<b>Suitable for:</b> IHC-Fr, ICC/IF, IHC-P <b>Unsuitable for:</b> WB
<b>Species reactivity</b>	<b>Reacts with:</b> Mouse, Human <b>Predicted to work with:</b> Rabbit, Goat, Horse, Chicken, Cow, Dog, Pig, Rhesus monkey 
<b>Immunogen</b>	Synthetic peptide corresponding to Mouse Endothelin B Receptor/ET-B aa 400-500 (C terminal) conjugated to keyhole limpet haemocyanin. Database link: <a href="#">P48302</a>  <a href="#">Run BLAST with</a>  <a href="#">Run BLAST with</a>
<b>General notes</b>	<p>The Life Science industry has been in the grips of a reproducibility crisis for a number of years. Abcam is leading the way in addressing this with our range of recombinant monoclonal antibodies and knockout edited cell lines for gold-standard validation. Please check that this product meets your needs before purchasing.</p> <p>If you have any questions, special requirements or concerns, please send us an inquiry and/or contact our Support team ahead of purchase. Recommended alternatives for this product can be found below, along with publications, customer reviews and Q&amp;As</p>

### Properties

---

<b>Form</b>	Liquid
<b>Storage instructions</b>	Shipped at 4°C. Upon delivery aliquot and store at -20°C. Avoid freeze / thaw cycles.
<b>Storage buffer</b>	Preservative: 0.02% Sodium azide Constituent: 99% Whole serum
<b>Purity</b>	Whole antiserum
<b>Clonality</b>	Polyclonal
<b>Isotype</b>	IgG

### Applications

---

## The Abpromise guarantee

Our **Abpromise guarantee** covers the use of ab117529 in the following tested applications.

The application notes include recommended starting dilutions; optimal dilutions/concentrations should be determined by the end user.

Application	Abreviews	Notes
IHC-Fr		1/500 - 1/2000.
ICC/IF	★★★★★ (2)	1/5000.
IHC-P	★★★★★ (1)	1/2000.

## Application notes

Is unsuitable for WB.

## Target

### Function

Non-specific receptor for endothelin 1, 2, and 3. Mediates its action by association with G proteins that activate a phosphatidylinositol-calcium second messenger system.

### Tissue specificity

Expressed in placental stem villi vessels, but not in cultured placental villi smooth muscle cells.

### Involvement in disease

Defects in EDNRB are a cause of Waardenburg syndrome type 4A (WS4A) [MIM:277580]; also known as Waardenburg-Shah syndrome. WS4A is characterized by the association of Waardenburg features (depigmentation and deafness) and the absence of enteric ganglia in the distal part of the intestine (Hirschsprung disease).

Defects in EDNRB are the cause of Hirschsprung disease type 2 (HSCR2) [MIM:600155]; also known as aganglionic megacolon (MGC). HSCR2 is a congenital disorder characterized by absence of enteric ganglia along a variable length of the intestine. It is the most common cause of congenital intestinal obstruction. Early symptoms range from complete acute neonatal obstruction, characterized by vomiting, abdominal distention and failure to pass stool, to chronic constipation in the older child.

Defects in EDNRB are the cause of ABCD syndrome (ABCDS) [MIM:600501]. ABCD syndrome is an autosomal recessive syndrome characterized by albinism, black lock at temporal occipital region, bilateral deafness, aganglionosis of the large intestine and total absence of neurocytes and nerve fibers in the small intestine.

### Sequence similarities

Belongs to the G-protein coupled receptor 1 family. Endothelin receptor subfamily. EDNRB sub-subfamily.

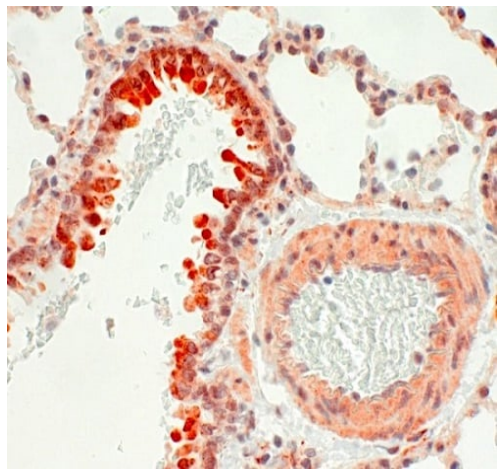
### Post-translational modifications

Palmitoylation of Cys-402 was confirmed by the palmitoylation of Cys-402 in a deletion mutant lacking both Cys-403 and Cys-405.

### Cellular localization

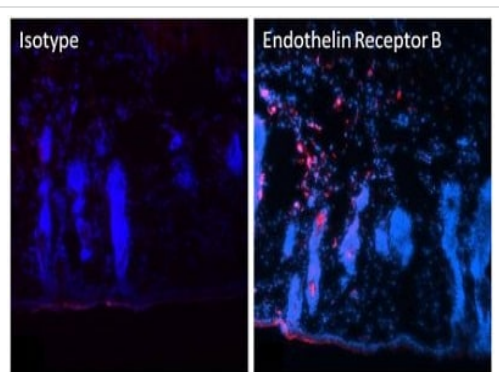
Cell membrane.

## Images



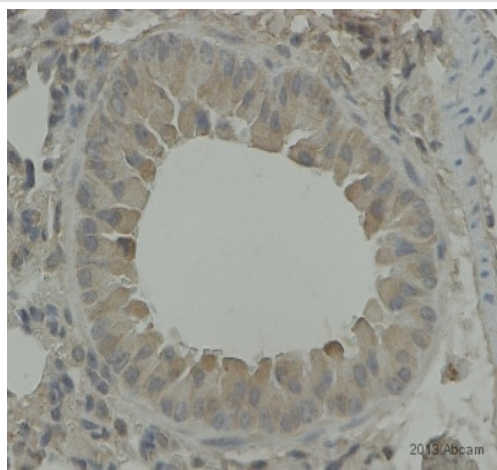
Immunohistochemistry (Formalin/PFA-fixed paraffin-embedded sections) - Anti-Endothelin B Receptor/ET-B antibody (ab117529)

Immunohistochemistry (Formalin/PFA-fixed paraffin-embedded sections) analysis of mouse lung tissue sections labeling Endothelin B Receptor/ET-B with ab117529.



Immunohistochemistry (Frozen sections) - Anti-Endothelin B Receptor/ET-B antibody (ab117529)

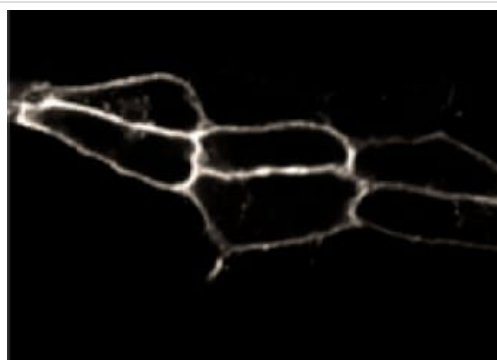
Immunohistochemistry (Frozen sections) analysis of mouse skin tissue sections labeling Endothelin B Receptor/ET-B with ab117529 at 1/800 dilution. Tissues were fixed for 10 minutes, blocked in 3% fish gelatin for 10-20 minutes, and probed with an Isotype Control Antibody (left panel) (1/800 dilution), and Anti-Endothelin B Receptor antibody (ab117529) (right panel) overnight at 4°C. Detection was performed using a PE-conjugated anti-rabbit IgG secondary antibody at a dilution of 1/800 (red). Nuclei were stained with DAPI and tissues were visualized by fluorescence microscopy.



Immunohistochemistry (Formalin/PFA-fixed paraffin-embedded sections) - Anti-Endothelin B Receptor/ET-B antibody (ab117529)

This image is courtesy of an anonymous abreview.

Immunohistochemistry (Formalin/PFA-fixed paraffin-embedded sections) analysis of mouse lung tissue sections labeling Endothelin B Receptor/ET-B with ab117529 at 1/1500 dilution. Tissue was fixed with formaldehyde; heat mediated antigen retrieval was performed using a citrate buffer pH 6.0. The tissue was blocked with 3% serum for 30 minutes at 20°C. The tissue was incubated with Anti-Endothelin B Receptor antibody (ab117529) for 12 hours in PBS at 20°C. A biotin conjugated goat anti-rabbit secondary antibody at 1/200 dilution.



Immunocytochemistry/ Immunofluorescence - Anti-Endothelin B Receptor/ET-B antibody (ab117529)

ab117529, at 1/5000 dilution, staining Endothelin B Receptor/ET-B in ETB-transfected HEK293 cells by Immunocytochemistry.

**Please note:** All products are "FOR RESEARCH USE ONLY. NOT FOR USE IN DIAGNOSTIC PROCEDURES"

#### **Our Abpromise to you: Quality guaranteed and expert technical support**

- Replacement or refund for products not performing as stated on the datasheet
- Valid for 12 months from date of delivery

- Response to your inquiry within 24 hours
- We provide support in Chinese, English, French, German, Japanese and Spanish
- Extensive multi-media technical resources to help you
- We investigate all quality concerns to ensure our products perform to the highest standards

If the product does not perform as described on this datasheet, we will offer a refund or replacement. For full details of the Abpromise, please visit <https://www.abcam.com/abpromise> or contact our technical team.

### **Terms and conditions**

---

- Guarantee only valid for products bought direct from Abcam or one of our authorized distributors