


Product datasheet

Anti-ENO1 antibody ab126136

[3 Images](#)

Overview

Product name	Anti-ENO1 antibody
Description	Rabbit polyclonal to ENO1
Host species	Rabbit
Tested applications	Suitable for: WB, IHC-P, ICC/IF
Species reactivity	Reacts with: Human Predicted to work with: Mouse, Rat, Chicken, Cow, Xenopus laevis, Monkey, Zebrafish 
Immunogen	Recombinant fragment corresponding to Human ENO1 aa 1-250.
Positive control	A431 whole cell lysate, HCT116 cells, U87 xenograft, 293T cells, Jurkat cells, Raji cells
General notes	<p>The Life Science industry has been in the grips of a reproducibility crisis for a number of years. Abcam is leading the way in addressing this with our range of recombinant monoclonal antibodies and knockout edited cell lines for gold-standard validation. Please check that this product meets your needs before purchasing.</p> <p>If you have any questions, special requirements or concerns, please send us an inquiry and/or contact our Support team ahead of purchase. Recommended alternatives for this product can be found below, along with publications, customer reviews and Q&As</p>

Properties

Form	Liquid
Storage instructions	Shipped at 4°C. Upon delivery aliquot. Store at -20°C or -80°C. Avoid freeze / thaw cycle.
Storage buffer	pH: 7.00 Preservative: 0.01% Thimerosal (merthiolate) Constituents: 78.99% PBS, 1% BSA, 20% Glycerol (glycerin, glycerine)
Purity	Immunogen affinity purified
Clonality	Polyclonal
Isotype	IgG

Applications

The **Abpromise guarantee** Our **Abpromise guarantee** covers the use of ab126136 in the following tested applications.

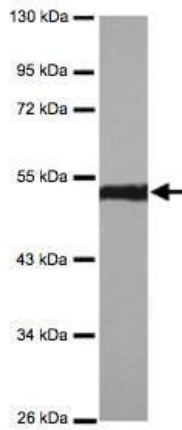
The application notes include recommended starting dilutions; optimal dilutions/concentrations should be determined by the end user.

Application	Abreviews	Notes
WB		1/500 - 1/3000. Predicted molecular weight: 47 kDa.
IHC-P		1/100 - 1/500. Perform heat mediated antigen retrieval with citrate buffer pH 6 before commencing with IHC staining protocol.
ICC/IF		1/100 - 1/500.

Target

Function	<p>Multifunctional enzyme that, as well as its role in glycolysis, plays a part in various processes such as growth control, hypoxia tolerance and allergic responses. May also function in the intravascular and pericellular fibrinolytic system due to its ability to serve as a receptor and activator of plasminogen on the cell surface of several cell-types such as leukocytes and neurons. Stimulates immunoglobulin production.</p> <p>MBP1 binds to the myc promoter and acts as a transcriptional repressor. May be a tumor suppressor.</p>
Tissue specificity	<p>The alpha/alpha homodimer is expressed in embryo and in most adult tissues. The alpha/beta heterodimer and the beta/beta homodimer are found in striated muscle, and the alpha/gamma heterodimer and the gamma/gamma homodimer in neurons.</p>
Pathway	<p>Carbohydrate degradation; glycolysis; pyruvate from D-glyceraldehyde 3-phosphate: step 4/5.</p>
Sequence similarities	<p>Belongs to the enolase family.</p>
Developmental stage	<p>During ontogenesis, there is a transition from the alpha/alpha homodimer to the alpha/beta heterodimer in striated muscle cells, and to the alpha/gamma heterodimer in nerve cells.</p>
Post-translational modifications	<p>ISGylated.</p>
Cellular localization	<p>Nucleus and Cytoplasm. Cell membrane. Cytoplasm > myofibril > sarcomere > M line. Can translocate to the plasma membrane in either the homodimeric (alpha/alpha) or heterodimeric (alpha/gamma) form. ENO1 is localized to the M line.</p>

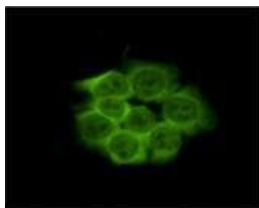
Images



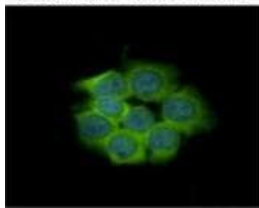
Western blot - Anti-ENO1 antibody (ab126136)

Anti-ENO1 antibody (ab126136) at 1/1000 dilution + A431 whole cell lysate at 30 µg

Predicted band size: 47 kDa

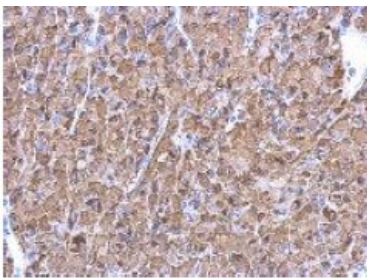


Costained with Hoechst 33342



Immunocytochemistry/ Immunofluorescence - Anti-ENO1 antibody (ab126136)

ab126136, at 1/500 dilution, staining methanol fixed HCT116 cells by immunofluorescence.



Immunohistochemistry (Formalin/PFA-fixed paraffin-embedded sections) - Anti-ENO1 antibody (ab126136)

ab126136, at 1/500 dilution, staining paraffin embedded U87 xenograft by immunohistochemistry.

Please note: All products are "FOR RESEARCH USE ONLY. NOT FOR USE IN DIAGNOSTIC PROCEDURES"

Our Abpromise to you: Quality guaranteed and expert technical support

- Replacement or refund for products not performing as stated on the datasheet
- Valid for 12 months from date of delivery
- Response to your inquiry within 24 hours

- We provide support in Chinese, English, French, German, Japanese and Spanish
- Extensive multi-media technical resources to help you
- We investigate all quality concerns to ensure our products perform to the highest standards

If the product does not perform as described on this datasheet, we will offer a refund or replacement. For full details of the Abpromise, please visit <https://www.abcam.com/abpromise> or contact our technical team.

Terms and conditions

- Guarantee only valid for products bought direct from Abcam or one of our authorized distributors