

## Product datasheet

# Anti-ENO3 antibody ab126259

★★★★★ [1 Abreviews](#) [2 References](#) [2 Images](#)

### Overview

---

<b>Product name</b>	Anti-ENO3 antibody
<b>Description</b>	Rabbit polyclonal to ENO3
<b>Host species</b>	Rabbit
<b>Tested applications</b>	<b>Suitable for:</b> WB, ICC/IF
<b>Species reactivity</b>	<b>Reacts with:</b> Human
<b>Immunogen</b>	Recombinant fragment, corresponding to a region within amino acids 1-371 of Human ENO3.
<b>Positive control</b>	A549, HeLa, HepG and HCT116 whole cell lysates; HeLa cells.
<b>General notes</b>	<p>The Life Science industry has been in the grips of a reproducibility crisis for a number of years. Abcam is leading the way in addressing this with our range of recombinant monoclonal antibodies and knockout edited cell lines for gold-standard validation. Please check that this product meets your needs before purchasing.</p> <p>If you have any questions, special requirements or concerns, please send us an inquiry and/or contact our Support team ahead of purchase. Recommended alternatives for this product can be found below, along with publications, customer reviews and Q&amp;As</p>

### Properties

---

<b>Form</b>	Liquid
<b>Storage instructions</b>	Shipped at 4°C. Upon delivery aliquot. Store at -20°C or -80°C. Avoid freeze / thaw cycle.
<b>Storage buffer</b>	pH: 7.00 Preservative: 0.01% Thimerosal (merthiolate) Constituents: 78.99% PBS, 1% BSA, 20% Glycerol (glycerin, glycerine)
<b>Purity</b>	Immunogen affinity purified
<b>Clonality</b>	Polyclonal
<b>Isotype</b>	IgG

### Applications

---

**The Abpromise guarantee** Our **Abpromise guarantee** covers the use of ab126259 in the following tested applications. The application notes include recommended starting dilutions; optimal dilutions/concentrations should be determined by the end user.

Application	Abreviews	Notes
WB	★★★★★ (1)	1/5000 - 1/20000. Predicted molecular weight: 47 kDa.
ICC/IF		1/100 - 1/1000.

## Target

### Function

Appears to have a function in striated muscle development and regeneration.

### Tissue specificity

The alpha/alpha homodimer is expressed in embryo and in most adult tissues. The alpha/beta heterodimer and the beta/beta homodimer are found in striated muscle, and the alpha/gamma heterodimer and the gamma/gamma homodimer in neurons.

### Pathway

Carbohydrate degradation; glycolysis; pyruvate from D-glyceraldehyde 3-phosphate: step 4/5.

### Involvement in disease

Defects in ENO3 are the cause of glycogen storage disease type 13 (GSD13) [MIM:612932]. A metabolic disorder that results in exercise-induced myalgias, generalized muscle weakness and fatigability. It is characterized by increased serum creatine kinase and decreased enolase 3 activity. Dramatically reduced protein levels with focal sarcoplasmic accumulation of glycogen-beta particles are detected on ultrastructural analysis.

### Sequence similarities

Belongs to the enolase family.

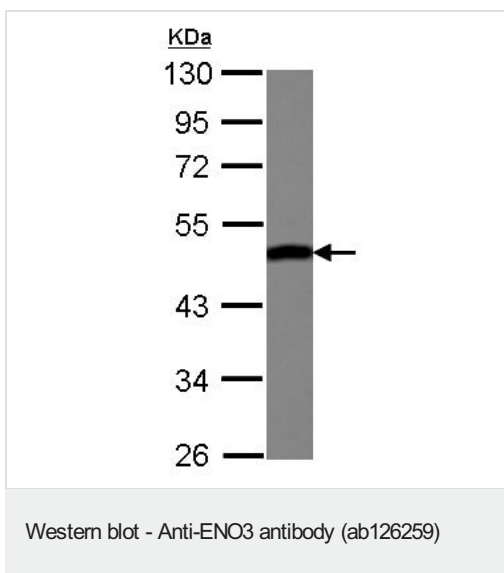
### Developmental stage

During ontogenesis, there is a transition from the alpha/alpha homodimer to the alpha/beta heterodimer in striated muscle cells, and to the alpha/gamma heterodimer in nerve cells.

### Cellular localization

Cytoplasm. Localized to the Z line. Some colocalization with CKM at M-band.

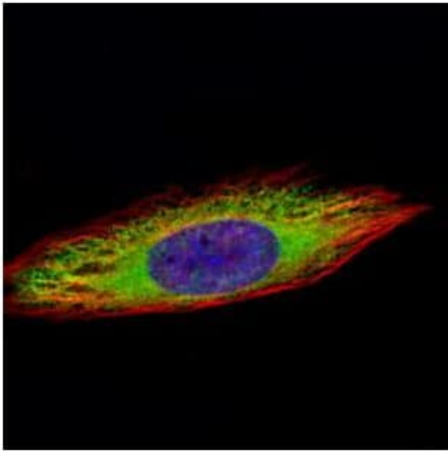
## Images



Anti-ENO3 antibody (ab126259) at 1/10000 dilution + HepG2 cell lysate at 30 µg

**Predicted band size:** 47 kDa

10% SDS-PAGE



ab126259 at 1/500 dilution staining ENO3 in methanol-fixed HeLa cells by Immunofluorescence (green). Alpha tubulin filaments are stained red.

Immunocytochemistry/ Immunofluorescence - Anti-ENO3 antibody (ab126259)

**Please note:** All products are "FOR RESEARCH USE ONLY. NOT FOR USE IN DIAGNOSTIC PROCEDURES"

### Our Abpromise to you: Quality guaranteed and expert technical support

---

- Replacement or refund for products not performing as stated on the datasheet
- Valid for 12 months from date of delivery
- Response to your inquiry within 24 hours
- We provide support in Chinese, English, French, German, Japanese and Spanish
- Extensive multi-media technical resources to help you
- We investigate all quality concerns to ensure our products perform to the highest standards

If the product does not perform as described on this datasheet, we will offer a refund or replacement. For full details of the Abpromise, please visit <https://www.abcam.com/abpromise> or contact our technical team.

### Terms and conditions

---

- Guarantee only valid for products bought direct from Abcam or one of our authorized distributors