



Product datasheet

Anti-ENO3 antibody ab231121

2 Images

Overview

Product name	Anti-ENO3 antibody
Description	Rabbit polyclonal to ENO3
Host species	Rabbit
Tested applications	Suitable for: WB
Species reactivity	Reacts with: Chicken
Immunogen	Recombinant full length protein corresponding to Chicken ENO3 aa 1 to the C-terminus. Two N-terminal tags, His-tag and GST-tag. Expressed in E. coli. Database link: P07322
	<div>  Run BLAST with  Run BLAST with </div>
Positive control	WB: Recombinant chicken ENO3 protein. Chicken muscle and brain tissue lysate.
General notes	<p>The Life Science industry has been in the grips of a reproducibility crisis for a number of years. Abcam is leading the way in addressing this with our range of recombinant monoclonal antibodies and knockout edited cell lines for gold-standard validation. Please check that this product meets your needs before purchasing.</p> <p>If you have any questions, special requirements or concerns, please send us an inquiry and/or contact our Support team ahead of purchase. Recommended alternatives for this product can be found below, along with publications, customer reviews and Q&As</p>

Properties

Form	Liquid
Storage instructions	Shipped at 4°C. Store at +4°C short term (1-2 weeks). Upon delivery aliquot. Store at -20°C long term. Avoid freeze / thaw cycle.
Storage buffer	pH: 7.40 Preservative: 0.011% Proclin 300 Constituents: 55.77% Glycerol (glycerin, glycerine), 44.219% PBS
Purity	Protein A purified
Purification notes	Antigen-specific affinity chromatography followed by Protein A affinity chromatography
Clonality	Polyclonal
Isotype	IgG

Applications

The Abpromise guarantee

Our **Abpromise guarantee** covers the use of ab231121 in the following tested applications.

The application notes include recommended starting dilutions; optimal dilutions/concentrations should be determined by the end user.

Application	Abreviews	Notes
WB		Use a concentration of 0.5 - 2 µg/ml.

Target

Function

Appears to have a function in striated muscle development and regeneration.

Tissue specificity

The alpha/alpha homodimer is expressed in embryo and in most adult tissues. The alpha/beta heterodimer and the beta/beta homodimer are found in striated muscle, and the alpha/gamma heterodimer and the gamma/gamma homodimer in neurons.

Pathway

Carbohydrate degradation; glycolysis; pyruvate from D-glyceraldehyde 3-phosphate: step 4/5.

Involvement in disease

Defects in ENO3 are the cause of glycogen storage disease type 13 (GSD13) [MIM:612932]. A metabolic disorder that results in exercise-induced myalgias, generalized muscle weakness and fatigability. It is characterized by increased serum creatine kinase and decreased enolase 3 activity. Dramatically reduced protein levels with focal sarcoplasmic accumulation of glycogen-beta particles are detected on ultrastructural analysis.

Sequence similarities

Belongs to the enolase family.

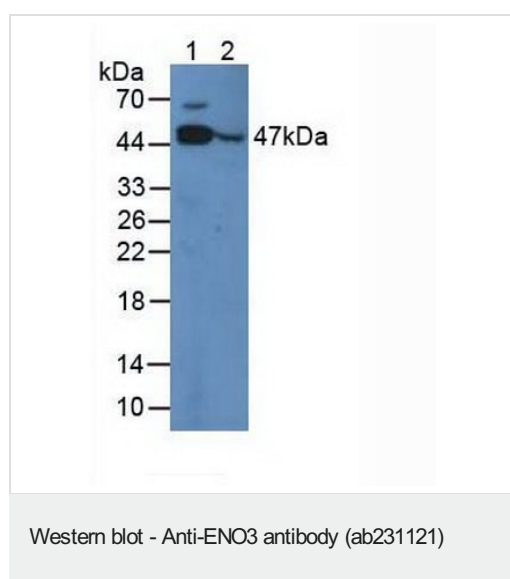
Developmental stage

During ontogenesis, there is a transition from the alpha/alpha homodimer to the alpha/beta heterodimer in striated muscle cells, and to the alpha/gamma heterodimer in nerve cells.

Cellular localization

Cytoplasm. Localized to the Z line. Some colocalization with CKM at M-band.

Images



All lanes : Anti-ENO3 antibody (ab231121) at 2 µg/ml

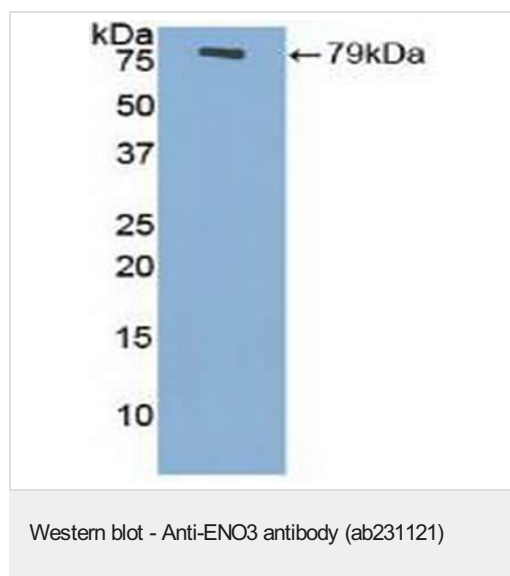
Lane 1 : Chicken muscle lysate

Lane 2 : Chicken brain lysate

Secondary

All lanes : HRP-linked Guinea pig Anti-Rabbit at 1/2000 dilution

Developed using the ECL technique.



Anti-ENO3 antibody (ab231121) at 2 µg/ml + Recombinant chicken ENO3 protein

Developed using the ECL technique.

Please note: All products are "FOR RESEARCH USE ONLY. NOT FOR USE IN DIAGNOSTIC PROCEDURES"

Our Abpromise to you: Quality guaranteed and expert technical support

- Replacement or refund for products not performing as stated on the datasheet
- Valid for 12 months from date of delivery
- Response to your inquiry within 24 hours
- We provide support in Chinese, English, French, German, Japanese and Spanish
- Extensive multi-media technical resources to help you
- We investigate all quality concerns to ensure our products perform to the highest standards

If the product does not perform as described on this datasheet, we will offer a refund or replacement. For full details of the Abpromise, please visit <https://www.abcam.com/abpromise> or contact our technical team.

Terms and conditions

- Guarantee only valid for products bought direct from Abcam or one of our authorized distributors