


## Product datasheet

### Anti-ENPP3/B10 antibody ab118448

[2 Images](#)

#### Overview

---

<b>Product name</b>	Anti-ENPP3/B10 antibody
<b>Description</b>	Rabbit polyclonal to ENPP3/B10
<b>Host species</b>	Rabbit
<b>Tested applications</b>	<b>Suitable for:</b> IHC-P
<b>Species reactivity</b>	<b>Reacts with:</b> Human <b>Predicted to work with:</b> Monkey, Common marmoset, Orangutan 
<b>Immunogen</b>	Synthetic peptide corresponding to Human ENPP3/B10 (internal sequence) conjugated to keyhole limpet haemocyanin.
<b>Positive control</b>	Human Ovary and Testis tissues
<b>General notes</b>	<p>The Life Science industry has been in the grips of a reproducibility crisis for a number of years. Abcam is leading the way in addressing this with our range of recombinant monoclonal antibodies and knockout edited cell lines for gold-standard validation. Please check that this product meets your needs before purchasing.</p> <p>If you have any questions, special requirements or concerns, please send us an inquiry and/or contact our Support team ahead of purchase. Recommended alternatives for this product can be found below, along with publications, customer reviews and Q&amp;As</p>

#### Properties

---

<b>Form</b>	Liquid
<b>Storage instructions</b>	Shipped at 4°C. Store at +4°C short term (1-2 weeks). Upon delivery aliquot. Store at -20°C long term.
<b>Storage buffer</b>	pH: 7.4 Preservative: 0.1% Sodium azide Constituent: 99% PBS
<b>Purity</b>	Immunogen affinity purified
<b>Clonality</b>	Polyclonal
<b>Isotype</b>	IgG

#### Applications

## The Abpromise guarantee

Our **Abpromise guarantee** covers the use of ab118448 in the following tested applications.

The application notes include recommended starting dilutions; optimal dilutions/concentrations should be determined by the end user.

Application	Abreviews	Notes
IHC-P		Use a concentration of 15 - 20 µg/ml. Perform heat mediated antigen retrieval with citrate buffer pH 6 before commencing with IHC staining protocol.

## Target

### Function

Cleaves a variety of phosphodiester and phosphosulfate bonds including deoxynucleotides, nucleotide sugars, and NAD.

### Tissue specificity

Expressed in bile ducts, prostate, uterus and colon. Exclusively expressed on basophils, mast cells and their progenitors.

### Sequence similarities

Belongs to the nucleotide pyrophosphatase/phosphodiesterase family.  
Contains 2 SMB (somatomedin-B) domains.

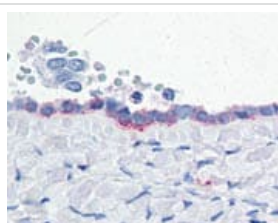
### Post-translational modifications

N-glycosylation is necessary for correct trafficking to the apical surface, but is not the apical targeting signal.  
It has been suggested that the active SMB domain may be permitted considerable disulfide bond heterogeneity or variability, thus two alternate disulfide patterns based on 3D structures are described with 1 disulfide bond conserved in both.

### Cellular localization

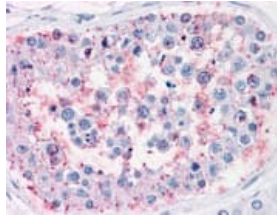
Membrane. Secreted. Located to the apical surface in intestinal and kidney epithelial cells. Located to the cell surface of basophils, and to the apical plasma membrane of bile duct cells. Secreted in serum, and in lumen of epithelial cells.

## Images



Immunohistochemistry on Formalin-Fixed, Paraffin-Embedded Human Ovary tissue using ab118448 at a concentration of 20 µg/ml.

Immunohistochemistry (Formalin/PFA-fixed paraffin-embedded sections) - Anti-ENPP3/B10 antibody (ab118448)



Immunohistochemistry on Formalin-Fixed, Paraffin-Embedded Human Testis tissue using ab118448 at a concentration of 20  $\mu\text{g/ml}$ .

Immunohistochemistry (Formalin/PFA-fixed paraffin-embedded sections) - Anti-ENPP3/B10 antibody (ab118448)

**Please note:** All products are "FOR RESEARCH USE ONLY. NOT FOR USE IN DIAGNOSTIC PROCEDURES"

### Our Abpromise to you: Quality guaranteed and expert technical support

---

- Replacement or refund for products not performing as stated on the datasheet
- Valid for 12 months from date of delivery
- Response to your inquiry within 24 hours
- We provide support in Chinese, English, French, German, Japanese and Spanish
- Extensive multi-media technical resources to help you
- We investigate all quality concerns to ensure our products perform to the highest standards

If the product does not perform as described on this datasheet, we will offer a refund or replacement. For full details of the Abpromise, please visit <https://www.abcam.com/abpromise> or contact our technical team.

### Terms and conditions

---

- Guarantee only valid for products bought direct from Abcam or one of our authorized distributors