

Anti-ENSA antibody ab125873

3 Images

Overview

Product name	Anti-ENSA antibody
Description	Rabbit polyclonal to ENSA
Host species	Rabbit
Tested applications	Suitable for: WB, ICC/IF
Species reactivity	Reacts with: Human
Immunogen	Recombinant fragment, corresponding to a region within amino acids 1-102 of Human ENSA (NP_004427).
Positive control	A549 whole cell lysate HeLa whole cell lysate HCT116 whole cell lysate HeLa cells (methanol fixed)
General notes	<p>The Life Science industry has been in the grips of a reproducibility crisis for a number of years. Abcam is leading the way in addressing this with our range of recombinant monoclonal antibodies and knockout edited cell lines for gold-standard validation. Please check that this product meets your needs before purchasing.</p> <p>If you have any questions, special requirements or concerns, please send us an inquiry and/or contact our Support team ahead of purchase. Recommended alternatives for this product can be found below, along with publications, customer reviews and Q&As</p>

Properties

Form	Liquid
Storage instructions	Shipped at 4°C. Upon delivery aliquot and store at -20°C or -80°C. Avoid repeated freeze / thaw cycles.
Storage buffer	<p>pH: 7.00</p> <p>Preservative: 0.01% Thimerosal (merthiolate)</p> <p>Constituents: 78.99% PBS, 1% BSA, 20% Glycerol (glycerin, glycerine)</p>
Purity	Immunogen affinity purified
Clonality	Polyclonal
Isotype	IgG

Applications

The Abpromise guarantee

Our **Abpromise guarantee** covers the use of ab125873 in the following tested applications.

The application notes include recommended starting dilutions; optimal dilutions/concentrations should be determined by the end user.

Application	Abreviews	Notes
WB		1/500 - 1/3000. Predicted molecular weight: 13 kDa.
ICC/IF		1/100 - 1/1000.

Target

Function

Protein phosphatase inhibitor that specifically inhibits protein phosphatase 2A (PP2A) during mitosis. When phosphorylated at Ser-67 during mitosis, specifically interacts with PPP2R2D (PR55-delta) and inhibits its activity, leading to inactivation of PP2A, an essential condition to keep cyclin-B1-CDK1 activity high during M phase (By similarity). Also acts as a stimulator of insulin secretion by interacting with sulfonylurea receptor (ABCC8), thereby preventing sulfonylurea from binding to its receptor and reducing K(ATP) channel currents.

Tissue specificity

Widely expressed with high levels in skeletal muscle and brain and lower levels in the pancreas.

Sequence similarities

Belongs to the endosulfine family.

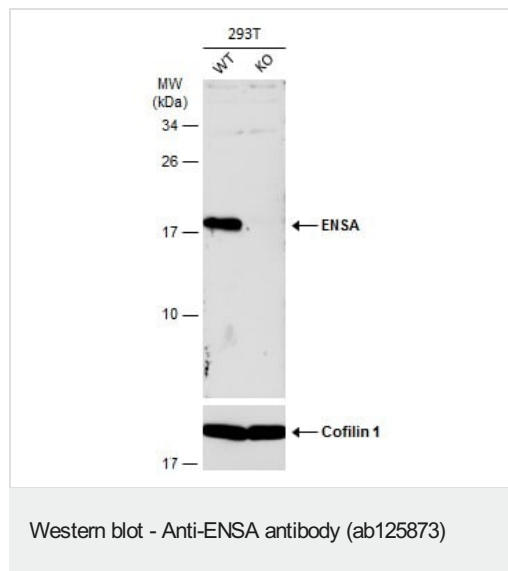
Post-translational modifications

Phosphorylation at Ser-67 by GWL during mitosis is essential for interaction with PPP2R2D (PR55-delta) and subsequent inactivation of PP2A (By similarity). Phosphorylated by PKA.

Cellular localization

Cytoplasm.

Images



All lanes : Anti-ENSA antibody (ab125873) at 1/500 dilution

Lane 1 : WT 293T cell extracts

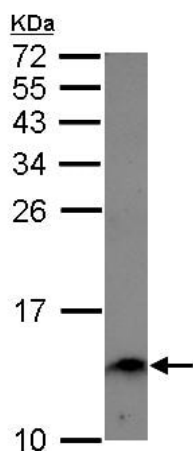
Lane 2 : ENSA Knockout 293T cell extracts

Lysates/proteins at 30 µg per lane.

Secondary

All lanes : HRP-conjugated anti-rabbit IgG

Predicted band size: 13 kDa

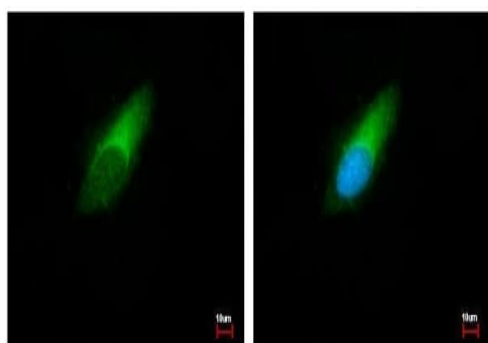


Western blot - Anti-ENSA antibody (ab125873)

Anti-ENSA antibody (ab125873) at 1/1000 dilution + A549 whole cell lysate at 30 µg

Predicted band size: 13 kDa

15% SDS PAGE



Immunocytochemistry/ Immunofluorescence - Anti-ENSA antibody (ab125873)

Methanol-fixed HeLa (human epithelial cell line from cervix adenocarcinoma) cells stained for ENSA (green) using ab125873 at 1/500 dilution in ICC/IF. Blue: Hoechst 33343 staining.

Please note: All products are "FOR RESEARCH USE ONLY. NOT FOR USE IN DIAGNOSTIC PROCEDURES"

Our Abpromise to you: Quality guaranteed and expert technical support

- Replacement or refund for products not performing as stated on the datasheet
- Valid for 12 months from date of delivery
- Response to your inquiry within 24 hours
- We provide support in Chinese, English, French, German, Japanese and Spanish
- Extensive multi-media technical resources to help you
- We investigate all quality concerns to ensure our products perform to the highest standards

If the product does not perform as described on this datasheet, we will offer a refund or replacement. For full details of the Abpromise,

please visit <https://www.abcam.com/abpromise> or contact our technical team.

Terms and conditions

- Guarantee only valid for products bought direct from Abcam or one of our authorized distributors