


Product datasheet

Anti-ENT2 antibody [EPR11674] ab181192

Recombinant **RabMAb**

[4 References](#) [6 Images](#)

Overview

Product name	Anti-ENT2 antibody [EPR11674]
Description	Rabbit monoclonal [EPR11674] to ENT2
Host species	Rabbit
Specificity	May be unsuitable with mouse in WB.
Tested applications	Suitable for: Flow Cyt (Intra), ICC/IF, IHC-P, WB
Species reactivity	Reacts with: Human Predicted to work with: Mouse, Rat 
Immunogen	Synthetic peptide. This information is proprietary to Abcam and/or its suppliers.
Positive control	HepG2, K562, Jurkat, SH-SY5Y cell lysates. Human RNT2 recombinant protein. Human clear cell carcinoma of the kidney tissue. HepG2 cells.
General notes	<p>This product is a recombinant monoclonal antibody, which offers several advantages including:</p> <ul style="list-style-type: none"> - High batch-to-batch consistency and reproducibility - Improved sensitivity and specificity - Long-term security of supply - Animal-free production <p>For more information see here.</p> <p>Our RabMAb[®] technology is a patented hybridoma-based technology for making rabbit monoclonal antibodies. For details on our patents, please refer to RabMAb[®] patents.</p>

Properties

Form	Liquid
Storage instructions	Shipped at 4°C. Store at +4°C short term (1-2 weeks). Upon delivery aliquot. Store at -20°C long term. Avoid freeze / thaw cycle.
Storage buffer	Preservative: 0.01% Sodium azide Constituents: 59% PBS, 40% Glycerol (glycerin, glycerine), 0.05% BSA
Purity	Protein A purified
Clonality	Monoclonal
Clone number	EPR11674

Isotype

IgG

Applications

The Abpromise guarantee

Our **Abpromise guarantee** covers the use of ab181192 in the following tested applications.

The application notes include recommended starting dilutions; optimal dilutions/concentrations should be determined by the end user.

Application	Abreviews	Notes
Flow Cyt (Intra)		1/10. ab172730 - Rabbit monoclonal IgG, is suitable for use as an isotype control with this antibody.
ICC/IF		1/100 - 1/250.
IHC-P		1/100 - 1/250. Perform heat mediated antigen retrieval with Tris/EDTA buffer pH 9.0 before commencing with IHC staining protocol.
WB		1/1000 - 1/2000. Detects a band of approximately 55-60 kDa (predicted molecular weight: 50 kDa).

Target

Function

Mediates equilibrative transport of purine, pyrimidine nucleosides and the purine base hypoxanthine. Very less sensitive than SLC29A1 to inhibition by nitrobenzylthioinosine (NBMPR), dipyridamole, dilazep and drafazine.

Tissue specificity

Expressed in skeletal muscle, liver, lung, placenta, brain, heart, kidney and ovarian tissues.

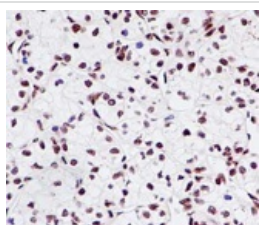
Sequence similarities

Belongs to the SLC29A/ENT transporter (TC 2.A.57) family.

Cellular localization

Basolateral cell membrane. Nucleus membrane. Localized at the basolateral cell membrane in polarized MDCK cells.

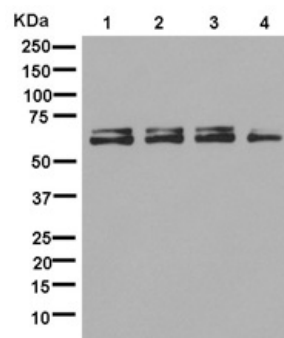
Images



Immunohistochemistry (Formalin/PFA-fixed paraffin-embedded sections) - Anti-ENT2 antibody
[EPR11674] (ab181192)

Immunohistochemical analysis of paraffin-embedded human clear cell carcinoma of the kidney tissue labeling ENT2 with ab181192 at 1/250 dilution and counterstained with Hematoxylin.

Perform heat mediated antigen retrieval with EDTA buffer pH 9 before commencing with IHC staining protocol.



Western blot - Anti-ENT2 antibody [EPR11674]
(ab181192)

All lanes : Anti-ENT2 antibody [EPR11674] (ab181192) at 1/1000 dilution

Lane 1 : HepG2

Lane 2 : K562

Lane 3 : Jurkat

Lane 4 : SH-SY5Y

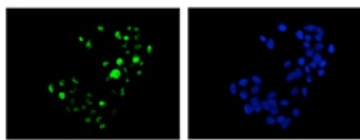
Lysates/proteins at 20 µg per lane.

Secondary

All lanes : Goat Anti-Rabbit IgG, (H+L), Peroxidase conjugated

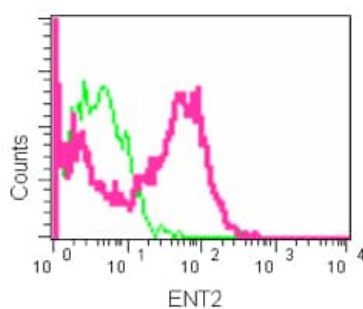
Predicted band size: 50 kDa

Additional bands at: 55-60 kDa (possible glycosylated form)



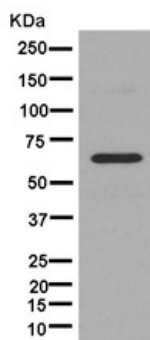
Immunocytochemistry/ Immunofluorescence - Anti-
ENT2 antibody [EPR11674] (ab181192)

Immunocytochemical analysis of HepG2 cells fixed in 4% paraformaldehyde labeling ENT2 with ab181192 at 1/250 dilution and Goat anti rabbit IgG (Alexa Fluor® 488) 1/200 dilution (green). Counterstained with DAPI (blue).



Flow Cytometry (Intracellular) - Anti-ENT2 antibody
[EPR11674] (ab181192)

Intracellular flow cytometric analysis of HepG2 cells fixed in 2% paraformaldehyde labeling ENT2 with ab181192 at 1/10 dilution and Goat anti-FITC at 1/150 dilution (pink). Rabbit monoclonal IgG was used as isotype control.



Western blot - Anti-ENT2 antibody [EPR11674]
(ab181192)

Anti-ENT2 antibody [EPR11674] (ab181192) at 1/1000 dilution +
Human ENT2 recombinant protein, 10 ng

Secondary

Goat Anti-Rabbit IgG, (H+L), Peroxidase conjugated at 1/1000
dilution

Predicted band size: 50 kDa

Why choose a recombinant antibody?



**Research with
confidence**
Consistent and
reproducible results



**Long-term and
scalable supply**
Recombinant
technology



**Success from the
first experiment**
Confirmed
specificity



**Ethical standards
compliant**
Animal-free
production

Anti-ENT2 antibody [EPR11674] (ab181192)

Please note: All products are "FOR RESEARCH USE ONLY. NOT FOR USE IN DIAGNOSTIC PROCEDURES"

Our Abpromise to you: Quality guaranteed and expert technical support

- Replacement or refund for products not performing as stated on the datasheet
- Valid for 12 months from date of delivery
- Response to your inquiry within 24 hours
- We provide support in Chinese, English, French, German, Japanese and Spanish
- Extensive multi-media technical resources to help you
- We investigate all quality concerns to ensure our products perform to the highest standards

If the product does not perform as described on this datasheet, we will offer a refund or replacement. For full details of the Abpromise, please visit <https://www.abcam.com/abpromise> or contact our technical team.

Terms and conditions

- Guarantee only valid for products bought direct from Abcam or one of our authorized distributors