

Product datasheet

Anti-entB antibody [3D10] ab190465

3 Images

Overview

Product name	Anti-entB antibody [3D10]
Description	Mouse monoclonal [3D10] to entB
Host species	Mouse
Specificity	ab190465 does not appear to cross react with TSST-1 or SEC-1.
Tested applications	Suitable for: Neutralising, WB, Sandwich ELISA Unsuitable for: ELISA
Species reactivity	Reacts with: Staphylococcus aureus
Immunogen	Full length native protein (purified) corresponding to entB. Database link: P01552
General notes	<p>The Life Science industry has been in the grips of a reproducibility crisis for a number of years. Abcam is leading the way in addressing this with our range of recombinant monoclonal antibodies and knockout edited cell lines for gold-standard validation. Please check that this product meets your needs before purchasing.</p> <p>If you have any questions, special requirements or concerns, please send us an inquiry and/or contact our Support team ahead of purchase. Recommended alternatives for this product can be found below, along with publications, customer reviews and Q&As</p>

Properties

Form	Liquid
Storage instructions	Shipped at 4°C. Store at +4°C short term (1-2 weeks). Upon delivery aliquot. Store at -20°C long term. Avoid freeze / thaw cycle.
Storage buffer	Constituent: 100% PBS
Purity	Protein G purified
Clonality	Monoclonal
Clone number	3D10
Isotype	IgG1

Applications

The Abpromise guarantee

Our **Abpromise guarantee** covers the use of ab190465 in the following tested applications.

The application notes include recommended starting dilutions; optimal dilutions/concentrations should be determined by the end user.

Application	Abreviews	Notes
Neutralising		Use at an assay dependent concentration. 10 nM of ab190465 completely inhibits superantigenic activity of 0.1 ng/ml SEB.
WB		Use a concentration of 1 µg/ml. Predicted molecular weight: 31 kDa.
Sandwich ELISA		Use a concentration of 1 µg/ml. ab190465 can be used for capture of SEB in an ELISA sandwich assay. ab190337 can be used as detection antibody, along with another anti rabbit HRP antibody.

Application notes

Is unsuitable for ELISA.

Target

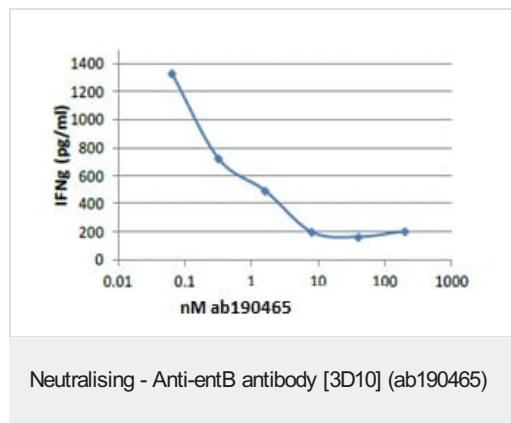
Relevance

Staphylococcal enterotoxins represent a group of proteins, which are secreted by Staphylococcus aureus and cause staphylococcal food poisoning syndrome. The illness is characterised by high fever, hypotension, diarrhea, shock, and in some cases death. Their molecular masses range between 27 and 30 kDa. At present, seven enterotoxins are known, namely A, B, C1, C2, C3, D and E. Their amino acid sequences have been determined and it was shown that all are single chain polypeptides containing one disulfide bond formed by two half cystines located in the middle of the polypeptide chain, which form the so called cysteine loop. SEB is an extremely potent activator of T cells, stimulating the production and secretion of various cytokines which mediate many of the toxic effects of SEB.

Cellular localization

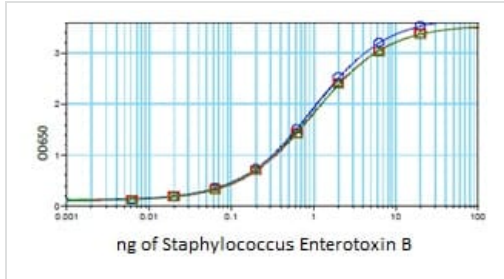
Secreted

Images



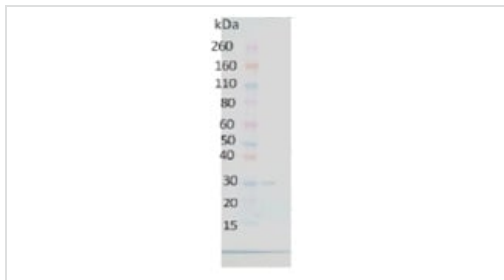
Toxin Neutralization: dose dependent suppression of entB-induced IFN γ production in Human peripheral mononuclear cells (PBMC).

Neutralising - Anti-entB antibody [3D10] (ab190465)



Sandwich ELISA - Anti-entB antibody [3D10]
(ab190465)

Capture ELISA in which ab190465 was coated to the plate overnight at 4°C at a concentration of 1 µg/mL. entB was serially diluted semi-log (1:3.16 serial dilutions) from 20 ng/mL and incubated on the antibody coated plate. Captured entB was detected using an anti-entB polyclonal antibody and anti-rabbit conjugate HRP conjugate. Data represent three different curves detected across the plate.



Western blot - Anti-entB antibody [3D10] (ab190465)

Anti-entB antibody [3D10] (ab190465) at 1 µg/ml + entB at 0.05 µg

Secondary

anti-mouse HRP conjugate.

Predicted band size: 31 kDa

Please note: All products are "FOR RESEARCH USE ONLY. NOT FOR USE IN DIAGNOSTIC PROCEDURES"

Our Abpromise to you: Quality guaranteed and expert technical support

- Replacement or refund for products not performing as stated on the datasheet
- Valid for 12 months from date of delivery
- Response to your inquiry within 24 hours
- We provide support in Chinese, English, French, German, Japanese and Spanish
- Extensive multi-media technical resources to help you
- We investigate all quality concerns to ensure our products perform to the highest standards

If the product does not perform as described on this datasheet, we will offer a refund or replacement. For full details of the Abpromise, please visit <https://www.abcam.com/abpromise> or contact our technical team.

Terms and conditions

- Guarantee only valid for products bought direct from Abcam or one of our authorized distributors