

Product datasheet

Anti-EPB41L1 antibody ab244499

[7 Images](#)

Overview

Product name	Anti-EPB41L1 antibody
Description	Rabbit polyclonal to EPB41L1
Host species	Rabbit
Tested applications	Suitable for: IHC-P, WB, ICC/IF
Species reactivity	Reacts with: Human
Immunogen	Recombinant fragment corresponding to Human EPB41L1 aa 600-750. Database link: Q9H4G0 Run BLAST with Run BLAST with
Positive control	WB:RT4 cell lysate. IHC-P: Human cerebral cortex, adrenal gland, kidney and colon tissue. ICC/IF: A549 cells.
General notes	<p>The Life Science industry has been in the grips of a reproducibility crisis for a number of years. Abcam is leading the way in addressing this with our range of recombinant monoclonal antibodies and knockout edited cell lines for gold-standard validation. Please check that this product meets your needs before purchasing.</p> <p>If you have any questions, special requirements or concerns, please send us an inquiry and/or contact our Support team ahead of purchase. Recommended alternatives for this product can be found below, along with publications, customer reviews and Q&As</p>

Properties

Form	Liquid
Storage instructions	Shipped at 4°C. Store at +4°C short term (1-2 weeks). Upon delivery aliquot. Store at -20°C long term. Avoid freeze / thaw cycle.
Storage buffer	pH: 7.20 Preservative: 0.02% Sodium azide Constituents: PBS, 40% Glycerol (glycerin, glycerine)
Purity	Immunogen affinity purified
Clonality	Polyclonal
Isotype	IgG

Applications

The Abpromise guarantee

Our **Abpromise guarantee** covers the use of ab244499 in the following tested applications.

The application notes include recommended starting dilutions; optimal dilutions/concentrations should be determined by the end user.

Application	Abreviews	Notes
IHC-P		1/200 - 1/500. Perform heat mediated antigen retrieval with citrate buffer pH 6 before commencing with IHC staining protocol.
WB		Use a concentration of 0.04 - 0.4 µg/ml. Predicted molecular weight: 99 kDa.
ICC/IF		Use a concentration of 0.25 - 2 µg/ml. Fixation/Permeabilization: PFA/Triton X-100.

Target

Function

May function to confer stability and plasticity to neuronal membrane via multiple interactions, including the spectrin-actin-based cytoskeleton, integral membrane channels and membrane-associated guanylate kinases.

Tissue specificity

Highest expression in brain, lower in heart, kidney, pancreas, placenta, lung and skeletal muscle.

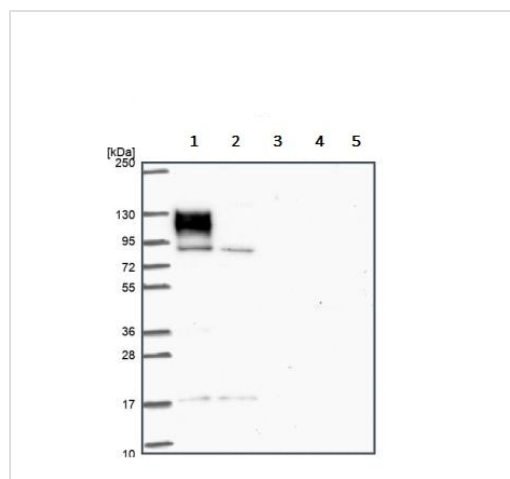
Sequence similarities

Contains 1 FERM domain.

Cellular localization

Cytoplasm > cytoskeleton.

Images



Western blot - Anti-EPB41L1 antibody (ab244499)

All lanes : Anti-EPB41L1 antibody (ab244499) at 0.4 µg/ml

Lane 1 : RT4 (human urinary bladder cancer cell line) cell lysate

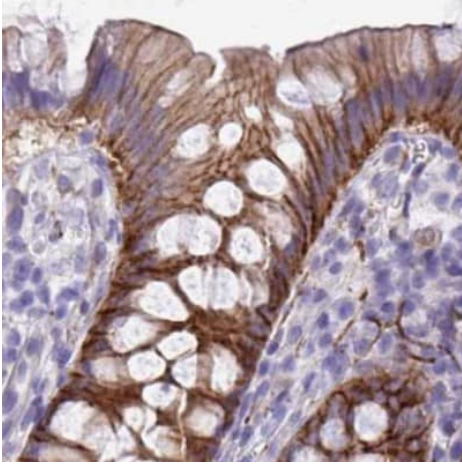
Lane 2 : U-251 MG (human brain glioma cell line) cell lysate

Lane 3 : Human plasma

Lane 4 : Human liver tissue lysate

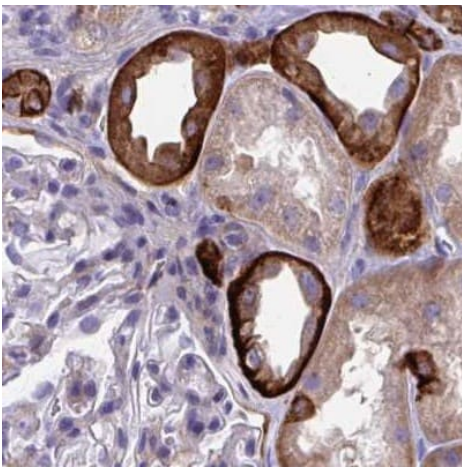
Lane 5 : Human tonsil tissue lysate

Predicted band size: 99 kDa



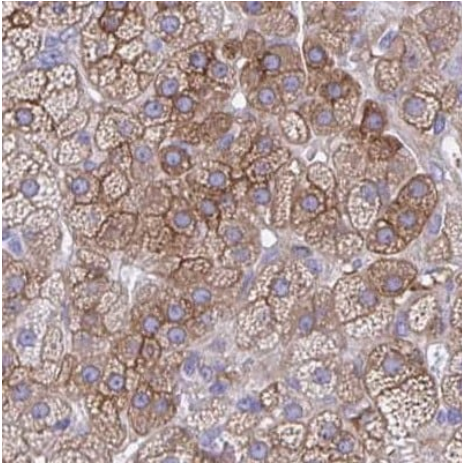
Immunohistochemistry (Formalin/PFA-fixed paraffin-embedded sections) - Anti-EPB41L1 antibody (ab244499)

Paraffin-embedded human colon tissue stained for EPB41L1 using ab244499 at 1/200 dilution in immunohistochemical analysis.



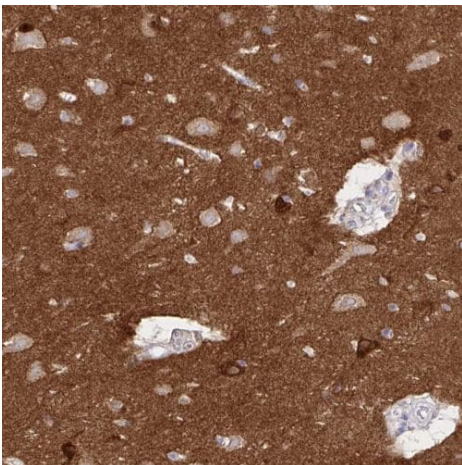
Immunohistochemistry (Formalin/PFA-fixed paraffin-embedded sections) - Anti-EPB41L1 antibody (ab244499)

Paraffin-embedded human kidney tissue stained for EPB41L1 using ab244499 at 1/200 dilution in immunohistochemical analysis.



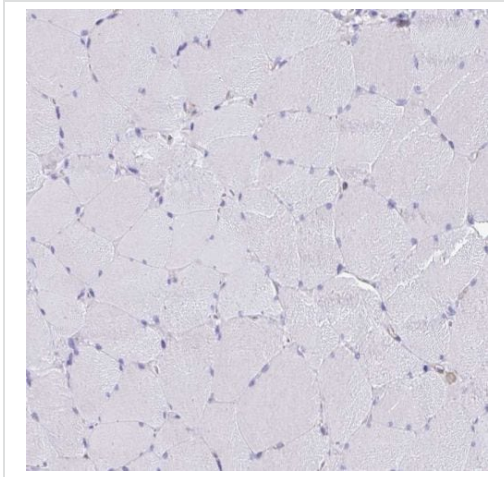
Paraffin-embedded human adrenal gland tissue stained for EPB41L1 using ab244499 at 1/200 dilution in immunohistochemical analysis.

Immunohistochemistry (Formalin/PFA-fixed paraffin-embedded sections) - Anti-EPB41L1 antibody (ab244499)



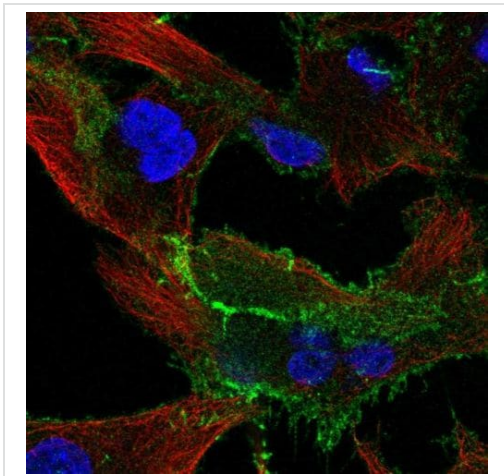
Paraffin-embedded human cerebral cortex tissue stained for EPB41L1 using ab244499 at 1/200 dilution in immunohistochemical analysis.

Immunohistochemistry (Formalin/PFA-fixed paraffin-embedded sections) - Anti-EPB41L1 antibody (ab244499)



Paraffin-embedded human skeletal muscle tissue stained for EPB41L1 using ab244499 at 1/200 dilution in immunohistochemical analysis. **Low expression, as expected.**

Immunohistochemistry (Formalin/PFA-fixed paraffin-embedded sections) - Anti-EPB41L1 antibody (ab244499)



PFA-fixed, Triton X-100 permeabilized A549 (human lung carcinoma cell line) cells stained for EPB41L1 (green) using ab244499 at 4 µg/ml in ICC/IF.

Immunocytochemistry/ Immunofluorescence - Anti-EPB41L1 antibody (ab244499)

Please note: All products are "FOR RESEARCH USE ONLY. NOT FOR USE IN DIAGNOSTIC PROCEDURES"

Our Abpromise to you: Quality guaranteed and expert technical support

- Replacement or refund for products not performing as stated on the datasheet
- Valid for 12 months from date of delivery
- Response to your inquiry within 24 hours
- We provide support in Chinese, English, French, German, Japanese and Spanish

- Extensive multi-media technical resources to help you
- We investigate all quality concerns to ensure our products perform to the highest standards

If the product does not perform as described on this datasheet, we will offer a refund or replacement. For full details of the Abpromise, please visit <https://www.abcam.com/abpromise> or contact our technical team.

Terms and conditions

- Guarantee only valid for products bought direct from Abcam or one of our authorized distributors