

Product datasheet

Anti-EPB41L1 antibody [EPR11090] ab179453

Recombinant RabMAb

4 Images

Overview

Product name	Anti-EPB41L1 antibody [EPR11090]
Description	Rabbit monoclonal [EPR11090] to EPB41L1
Host species	Rabbit
Tested applications	Suitable for: Flow Cyt (Intra), WB, IP Unsuitable for: ICC/IF or IHC-P
Species reactivity	Reacts with: Mouse, Human
Immunogen	Synthetic peptide within Human EPB41L1 aa 1-100 (Cysteine residue). The exact sequence is proprietary. Database link: Q9H4G0
Positive control	Human fetal brain and Neuro 2a lysates; Neuro 2a cells.
General notes	<p>This product is a recombinant monoclonal antibody, which offers several advantages including:</p> <ul style="list-style-type: none"> - High batch-to-batch consistency and reproducibility - Improved sensitivity and specificity - Long-term security of supply - Animal-free production <p>For more information see here.</p> <p>Our RabMAb[®] technology is a patented hybridoma-based technology for making rabbit monoclonal antibodies. For details on our patents, please refer to RabMAb[®] patents.</p> <p>Rat: We have preliminary internal testing data to indicate this antibody may not react with this species. Please contact us for more information.</p>

Properties

Form	Liquid
Storage instructions	Shipped at 4°C. Store at +4°C short term (1-2 weeks). Upon delivery aliquot. Store at -20°C long term. Avoid freeze / thaw cycle.
Storage buffer	pH: 7.20 Preservative: 0.01% Sodium azide Constituents: 9% PBS, 40% Glycerol (glycerin, glycerine), 0.05% BSA, 50% Tissue culture supernatant

Purity	Tissue culture supernatant
Clonality	Monoclonal
Clone number	EPR11090
Isotype	IgG

Applications

The Abpromise guarantee Our **Abpromise guarantee** covers the use of ab179453 in the following tested applications.

The application notes include recommended starting dilutions; optimal dilutions/concentrations should be determined by the end user.

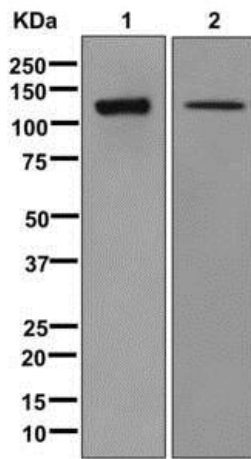
Application	Abreviews	Notes
Flow Cyt (Intra)		1/10 - 1/100. ab172730 - Rabbit monoclonal IgG, is suitable for use as an isotype control with this antibody.
WB		1/1000 - 1/5000. Predicted molecular weight: 99 kDa.
IP		1/10 - 1/100.

Application notes Is unsuitable for ICC/IF or IHC-P.

Target

Function	May function to confer stability and plasticity to neuronal membrane via multiple interactions, including the spectrin-actin-based cytoskeleton, integral membrane channels and membrane-associated guanylate kinases.
Tissue specificity	Highest expression in brain, lower in heart, kidney, pancreas, placenta, lung and skeletal muscle.
Sequence similarities	Contains 1 FERM domain.
Cellular localization	Cytoplasm > cytoskeleton.

Images



Western blot - Anti-EPB41L1 antibody [EPR11090] (ab179453)

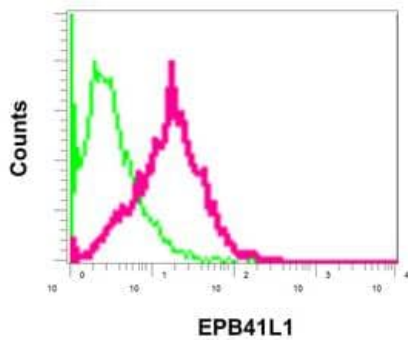
All lanes : Anti-EPB41L1 antibody [EPR11090] (ab179453) at 1/1000 dilution

Lane 1 : Human fetal brain tissue lysate

Lane 2 : Neuro 2a lysate

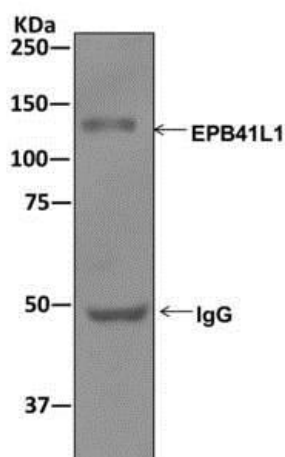
Lysates/proteins at 10 µg per lane.

Predicted band size: 99 kDa



Flow Cytometry (Intracellular) - Anti-EPB41L1 antibody [EPR11090] (ab179453)

Intracellular flow cytometric analysis of permeabilized Neuro 2a cells labeling EPB41L1 with ab179453 at 1/10 dilution (red), compared to a rabbit IgG negative control (green).



Immunoprecipitation - Anti-EPB41L1 antibody [EPR11090] (ab179453)

Western blot analysis on immunoprecipitation pellet from Human fetal brain lysate immunoprecipitated using ab179453 at 1/10 dilution.

Why choose a recombinant antibody?



Research with confidence
Consistent and reproducible results



Long-term and scalable supply
Recombinant technology



Success from the first experiment
Confirmed specificity



Ethical standards compliant
Animal-free production

Anti-EPB41L1 antibody [EPR11090] (ab179453)

Please note: All products are "FOR RESEARCH USE ONLY. NOT FOR USE IN DIAGNOSTIC PROCEDURES"

Our Abpromise to you: Quality guaranteed and expert technical support

- Replacement or refund for products not performing as stated on the datasheet
- Valid for 12 months from date of delivery
- Response to your inquiry within 24 hours
- We provide support in Chinese, English, French, German, Japanese and Spanish
- Extensive multi-media technical resources to help you
- We investigate all quality concerns to ensure our products perform to the highest standards

If the product does not perform as described on this datasheet, we will offer a refund or replacement. For full details of the Abpromise, please visit <https://www.abcam.com/abpromise> or contact our technical team.

Terms and conditions

- Guarantee only valid for products bought direct from Abcam or one of our authorized distributors