


### Anti-EPF antibody ab227428

★☆☆☆☆ **1 Abreviews** [5 Images](#)

#### Overview

<b>Product name</b>	Anti-EPF antibody
<b>Description</b>	Rabbit polyclonal to EPF
<b>Host species</b>	Rabbit
<b>Tested applications</b>	<b>Suitable for:</b> WB, IHC-P, ICC/IF
<b>Species reactivity</b>	<b>Reacts with:</b> Mouse, Human <b>Predicted to work with:</b> Rat, Cow, Pig, Rhesus monkey 
<b>Immunogen</b>	Recombinant full length protein corresponding to Human EPF. Database link: <a href="#">P61604</a>
<b>Positive control</b>	WB: Mouse brain lysate. IHC: Human lung carcinoma tissue. ICC/IF: HeLa, U-2 OS and SK-N-SH cells.
<b>General notes</b>	<p>The Life Science industry has been in the grips of a reproducibility crisis for a number of years. Abcam is leading the way in addressing this with our range of recombinant monoclonal antibodies and knockout edited cell lines for gold-standard validation. Please check that this product meets your needs before purchasing.</p> <p>If you have any questions, special requirements or concerns, please send us an inquiry and/or contact our Support team ahead of purchase. Recommended alternatives for this product can be found below, along with publications, customer reviews and Q&amp;As</p>

#### Properties

<b>Form</b>	Liquid
<b>Storage instructions</b>	Shipped at 4°C. Store at +4°C short term (1-2 weeks). Upon delivery aliquot. Store at -20°C long term. Avoid freeze / thaw cycle.
<b>Storage buffer</b>	pH: 7.00 Preservative: 0.01% Thimerosal (merthiolate) Constituents: 1.21% Tris, 0.75% Glycine, 20% Glycerol (glycerin, glycerine)
<b>Purity</b>	Immunogen affinity purified
<b>Clonality</b>	Polyclonal
<b>Isotype</b>	IgG

## Applications

### The Abpromise guarantee

Our **Abpromise guarantee** covers the use of ab227428 in the following tested applications.

The application notes include recommended starting dilutions; optimal dilutions/concentrations should be determined by the end user.

Application	Abreviews	Notes
WB	★☆☆☆☆ (1)	1/500 - 1/3000. Predicted molecular weight: 11 kDa.
IHC-P		1/100 - 1/1000.
ICC/IF		1/100 - 1/1000.

## Target

### Function

Eukaryotic CPN10 homolog which is essential for mitochondrial protein biogenesis, together with CPN60. Binds to CPN60 in the presence of Mg-ATP and suppresses the ATPase activity of the latter.

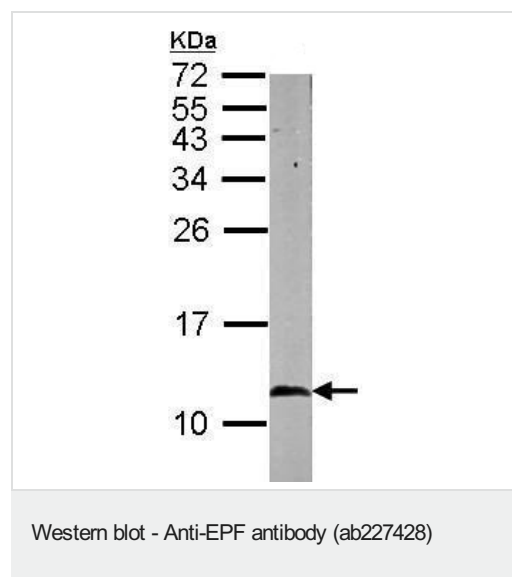
### Sequence similarities

Belongs to the GroES chaperonin family.

### Cellular localization

Mitochondrion matrix.

## Images



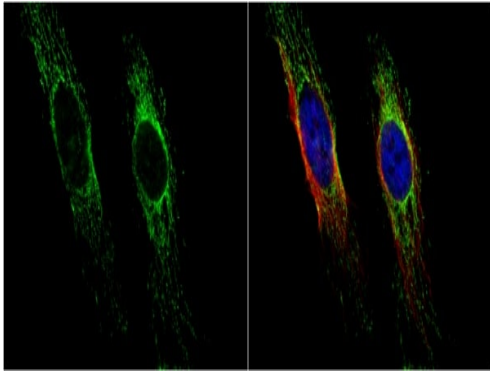
Anti-EPF antibody (ab227428) at 1/1000 dilution + Mouse brain tissue lysate at 50 µg

Developed using the ECL technique.

Performed under reducing conditions.

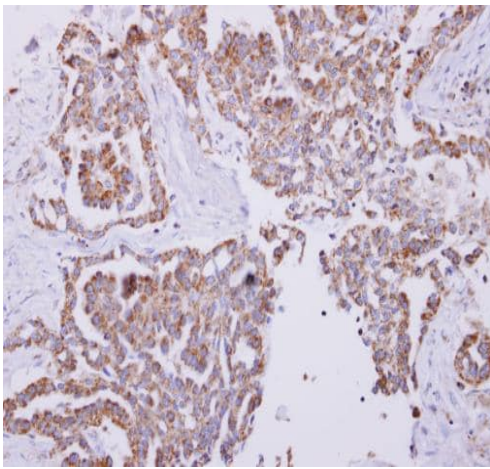
**Predicted band size:** 11 kDa

15% SDS PAGE



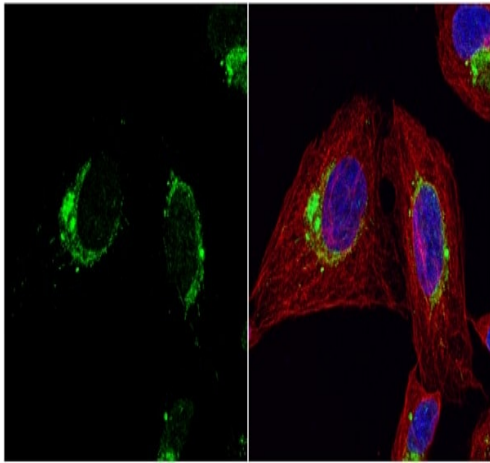
Immunocytochemistry/ Immunofluorescence - Anti-EPF antibody (ab227428)

HeLa (human epithelial cell line from cervix adenocarcinoma) cells stained for EPF (green) using ab227428 at 1/100 dilution in ICC/IF. Cells were fixed in 4% paraformaldehyde at RT for 15 minutes. Counterstained: alpha tubulin (red) and Hoechst 33342 (blue).



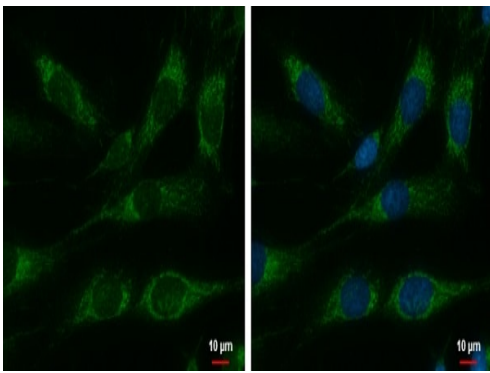
Immunohistochemistry (Formalin/PFA-fixed paraffin-embedded sections) - Anti-EPF antibody (ab227428)

Paraffin-embedded human lung carcinoma tissue stained for EPF using ab227428 at 1/250 dilution in immunohistochemical analysis.



Immunocytochemistry/ Immunofluorescence - Anti-EPF antibody (ab227428)

U-2 OS (human bone osteosarcoma epithelial cell line) cells stained for EPF (green) using ab227428 at 1/200 dilution in ICC/IF. Cells were fixed in 4% paraformaldehyde at RT for 15 minutes. Counterstained: alpha tubulin (red) and Hoechst 33342 (blue).



Immunocytochemistry/ Immunofluorescence - Anti-EPF antibody (ab227428)

SK-N-SH (human neuroblastoma cell line) cells stained for EPF (green) using ab227428 at 1/500 dilution in ICC/IF. Cells were fixed in 2% paraformaldehyde/culture medium at 37°C for 15 minutes. Counterstained : Hoechst 33342 (blue).

**Please note:** All products are "FOR RESEARCH USE ONLY. NOT FOR USE IN DIAGNOSTIC PROCEDURES"

#### Our Abpromise to you: Quality guaranteed and expert technical support

- Replacement or refund for products not performing as stated on the datasheet
- Valid for 12 months from date of delivery
- Response to your inquiry within 24 hours

- We provide support in Chinese, English, French, German, Japanese and Spanish
- Extensive multi-media technical resources to help you
- We investigate all quality concerns to ensure our products perform to the highest standards

If the product does not perform as described on this datasheet, we will offer a refund or replacement. For full details of the Abpromise, please visit <https://www.abcam.com/abpromise> or contact our technical team.

#### **Terms and conditions**

---

- Guarantee only valid for products bought direct from Abcam or one of our authorized distributors