

Product datasheet

Anti-Eph receptor A3 antibody [EPR24479-136] ab281926

Recombinant RabMAb

[4 Images](#)

Overview

| | |
|----------------------------|--|
| Product name | Anti-Eph receptor A3 antibody [EPR24479-136] |
| Description | Rabbit monoclonal [EPR24479-136] to Eph receptor A3 |
| Host species | Rabbit |
| Tested applications | Suitable for: WB Unsuitable for: Flow Cyt, ICC/IF, IHC-P or IP |
| Species reactivity | Reacts with: Mouse, Human |
| Immunogen | Recombinant fragment. This information is proprietary to Abcam and/or its suppliers. |
| Positive control | WB: 22Rv1 and B16-F10 untreated/treated with PNGase F whole cell lysate. His-tagged human EPHA3 recombinant protein. |
| General notes | <p>This product is a recombinant monoclonal antibody, which offers several advantages including:</p> <ul style="list-style-type: none">- High batch-to-batch consistency and reproducibility- Improved sensitivity and specificity- Long-term security of supply- Animal-free production <p>For more information see here.</p> <p>Our RabMAb[®] technology is a patented hybridoma-based technology for making rabbit monoclonal antibodies. For details on our patents, please refer to RabMAb[®] patents.</p> |

Properties

| | |
|-----------------------------|---|
| Form | Liquid |
| Storage instructions | Shipped at 4°C. Store at +4°C short term (1-2 weeks). Upon delivery aliquot. Store at -20°C long term. Avoid freeze / thaw cycle. |
| Storage buffer | pH: 7.2 Preservative: 0.01% Sodium azide Constituents: 59.94% PBS, 40% Glycerol (glycerin, glycerine), 0.05% BSA |
| Purity | Protein A purified |
| Clonality | Monoclonal |

Clone number EPR24479-136
Isotype IgG

Applications

The Abpromise guarantee Our **Abpromise guarantee** covers the use of ab281926 in the following tested applications. The application notes include recommended starting dilutions; optimal dilutions/concentrations should be determined by the end user.

| Application | Abreviews | Notes |
|-------------|-----------|--|
| WB | | 1/1000. Predicted molecular weight: 110 kDa. |

Application notes Is unsuitable for Flow Cyt, ICC/IF, IHC-P or IP.

Target

Function Receptor for members of the ephrin-A family. Binds to ephrin-A2, -A3, -A4 and -A5. Could play a role in lymphoid function.

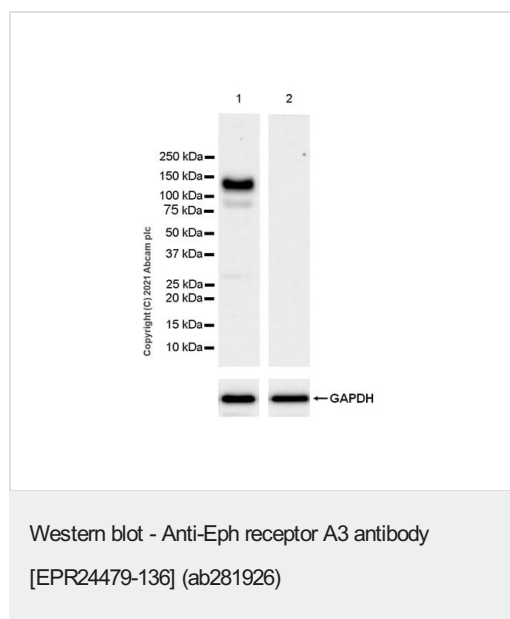
Tissue specificity Widely expressed. Highest level in placenta.

Involvement in disease Defects in EPHA3 may be a cause of colorectal cancer (CRC) [MIM:114500].

Sequence similarities Belongs to the protein kinase superfamily. Tyr protein kinase family. Ephrin receptor subfamily. Contains 2 fibronectin type-III domains. Contains 1 protein kinase domain. Contains 1 SAM (sterile alpha motif) domain.

Cellular localization Secreted and Cell membrane.

Images



All lanes : Anti-Eph receptor A3 antibody [EPR24479-136] (ab281926) at 1/1000 dilution

Lane 1 : 22Rv1 (human prostate carcinoma epithelial cell), whole cell lysate

Lane 2 : HL-60 (human Acute Promyelocytic Leukemia promyeloblast), whole cell lysate

Lysates/proteins at 20 µg per lane.

Secondary

All lanes : Goat Anti-Rabbit IgG H&L (HRP) (**ab97051**) at 1/100000 dilution

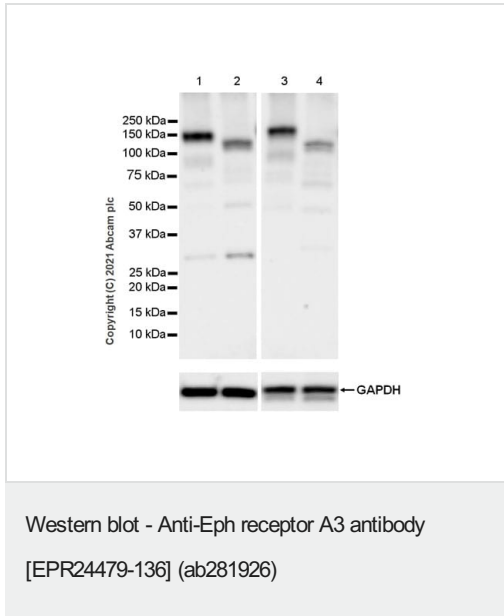
Predicted band size: 110 kDa

Observed band size: 150 kDa

Blocking and diluting buffer and concentration: 5% NFDN/TBST.

Negative control: HL-60 (PMID: 18814179).

Exposure time: 59 seconds.



All lanes : Anti-Eph receptor A3 antibody [EPR24479-136] (ab281926) at 1/1000 dilution

Lane 1 : 22Rv1 (human prostate carcinoma epithelial cell), whole cell lysate

Lane 2 : 22Rv1 whole cell lysate treated with PNGase F

Lane 3 : B16-F10 (Mouse skin melanoma), whole cell lysate

Lane 4 : B16-F10 whole cell lysate treated with PNGase F

Lysates/proteins at 15 µg per lane.

Secondary

All lanes : Goat Anti-Rabbit IgG H&L (HRP) (**ab97051**) at 1/50000 dilution

Predicted band size: 110 kDa

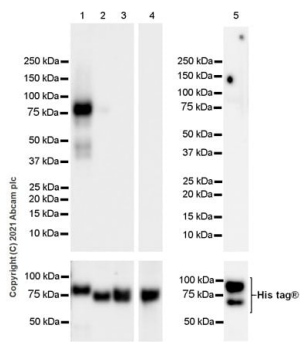
Observed band size: 140-150 kDa

Blocking and diluting buffer and concentration: 5% NFDN/TBST.

EPHA3 is a glycoprotein and can be de-glycosylated by PNGase F.

The molecular mass observed is consistent with the literature (PMID:28415715).

Exposure times: Lane 1-2: 37 secs; Lane 3-4: 15 secs.



Western blot - Anti-Eph receptor A3 antibody
[EPR24479-136] (ab281926)

All lanes : Anti-Eph receptor A3 antibody [EPR24479-136]
(ab281926) at 1/1000 dilution

Lane 1 : His-tagged human EPHA3 recombinant protein at 0.01 μg

Lane 2 : His-tagged human EPHA2 recombinant protein at 0.01 μg

Lane 3 : His-tagged human EPHA4 recombinant protein at 0.01 μg

Lane 4 : His-tagged human EPHA7 recombinant protein at 0.01 μg

Lane 5 : His-tagged human EPHA5 recombinant protein at 0.1 μg

Secondary

All lanes : Goat Anti-Rabbit IgG H&L (HRP) ([ab97051](#)) at 1/50000
dilution

Predicted band size: 110 kDa

Observed band size: 80 kDa

Blocking and diluting buffer and concentration: 5% NFD/MTBST.

Exposure times: Lanes 1-4: 5.5 secs; Lane 5: 26 secs.

Why choose a recombinant antibody?



Research with confidence
Consistent and reproducible results



Long-term and scalable supply
Recombinant technology



Success from the first experiment
Confirmed specificity



Ethical standards compliant
Animal-free production

Anti-Eph receptor A3 antibody [EPR24479-136]
(ab281926)

Please note: All products are "FOR RESEARCH USE ONLY. NOT FOR USE IN DIAGNOSTIC PROCEDURES"

Our Abpromise to you: Quality guaranteed and expert technical support

- Replacement or refund for products not performing as stated on the datasheet
- Valid for 12 months from date of delivery
- Response to your inquiry within 24 hours
- We provide support in Chinese, English, French, German, Japanese and Spanish
- Extensive multi-media technical resources to help you
- We investigate all quality concerns to ensure our products perform to the highest standards

If the product does not perform as described on this datasheet, we will offer a refund or replacement. For full details of the Abpromise, please visit <https://www.abcam.com/abpromise> or contact our technical team.

Terms and conditions

- Guarantee only valid for products bought direct from Abcam or one of our authorized distributors