


# Anti-Eph receptor A4/SEK antibody [M280] ab157588

[1 References](#) [1 Image](#)

### Overview

<b>Product name</b>	Anti-Eph receptor A4/SEK antibody [M280]
<b>Description</b>	Mouse monoclonal [M280] to Eph receptor A4/SEK
<b>Host species</b>	Mouse
<b>Specificity</b>	The region used as immunogen has less than 50% homology with other EphA and EphB family members.
<b>Tested applications</b>	<b>Suitable for:</b> WB
<b>Species reactivity</b>	<b>Reacts with:</b> Human <b>Predicted to work with:</b> Rat, Chicken 
<b>Immunogen</b>	Recombinant fragment corresponding to Human Eph receptor A4/SEK (N terminal).
<b>Positive control</b>	HUVEC and Mouse brain tissue lysates.
<b>General notes</b>	<p>The Life Science industry has been in the grips of a reproducibility crisis for a number of years. Abcam is leading the way in addressing this with our range of recombinant monoclonal antibodies and knockout edited cell lines for gold-standard validation. Please check that this product meets your needs before purchasing.</p> <p>If you have any questions, special requirements or concerns, please send us an inquiry and/or contact our Support team ahead of purchase. Recommended alternatives for this product can be found below, along with publications, customer reviews and Q&amp;As</p>

### Properties

<b>Form</b>	Liquid
<b>Storage instructions</b>	Shipped at 4°C. Store at -20°C.
<b>Storage buffer</b>	Preservative: 0.05% Sodium azide Constituents: 50% Glycerol, 0.1% BSA, 49% PBS
<b>Purity</b>	Protein A purified
<b>Clonality</b>	Monoclonal
<b>Clone number</b>	M280
<b>Isotype</b>	IgG1

## Applications

### The Abpromise guarantee

Our **Abpromise guarantee** covers the use of ab157588 in the following tested applications.

The application notes include recommended starting dilutions; optimal dilutions/concentrations should be determined by the end user.

Application	Abreviews	Notes
WB		1/1000. Detects a band of approximately 95, 120 kDa (predicted molecular weight: 110 kDa).

## Target

### Function

Receptor for members of the ephrin-A family. Binds to ephrin-A1, -A4 and -A5. Binds more poorly to ephrin-A2 and -A3. May play a role in a signal transduction process involved in hindbrain pattern formation.

### Tissue specificity

Ubiquitous.

### Sequence similarities

Belongs to the protein kinase superfamily. Tyr protein kinase family. Ephrin receptor subfamily. Contains 2 fibronectin type-III domains. Contains 1 protein kinase domain. Contains 1 SAM (sterile alpha motif) domain.

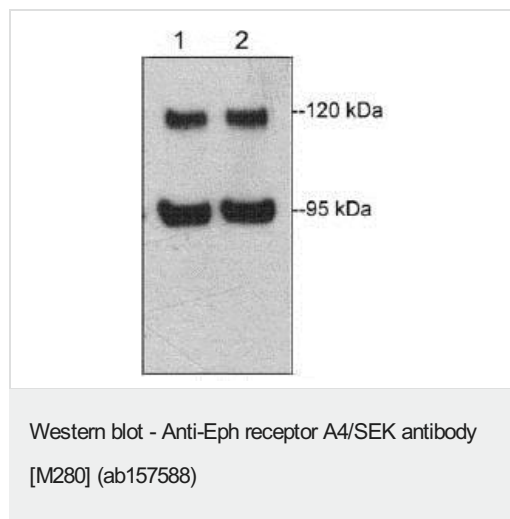
### Domain

The protein kinase domain mediates interaction with NGEF/ephexin-1.

### Cellular localization

Membrane.

## Images



**All lanes :** Anti-Eph receptor A4/SEK antibody [M280] (ab157588) at 1/1000 dilution

**Lane 1 :** HUVEC cells

**Lane 2 :** HUVEC cells treated with pervanadate (1 mM) for 30 min

**Predicted band size:** 110 kDa

**Please note:** All products are "FOR RESEARCH USE ONLY. NOT FOR USE IN DIAGNOSTIC PROCEDURES"

## Our Abpromise to you: Quality guaranteed and expert technical support

- Replacement or refund for products not performing as stated on the datasheet
- Valid for 12 months from date of delivery

- Response to your inquiry within 24 hours
- We provide support in Chinese, English, French, German, Japanese and Spanish
- Extensive multi-media technical resources to help you
- We investigate all quality concerns to ensure our products perform to the highest standards

If the product does not perform as described on this datasheet, we will offer a refund or replacement. For full details of the Abpromise, please visit <https://www.abcam.com/abpromise> or contact our technical team.

#### **Terms and conditions**

---

- Guarantee only valid for products bought direct from Abcam or one of our authorized distributors