





Product datasheet

Anti-Epiphycan antibody ab122449

1 Image

Overview

Product name	Anti-Epiphycan antibody
Description	Rabbit polyclonal to Epiphycan
Host species	Rabbit
Tested applications	Suitable for: IHC-P
Species reactivity	Reacts with: Human Predicted to work with: Mouse, Rat 
Immunogen	Recombinant fragment: LRDNKIRQLP ELPTTLTFID ISNNRLGRKG IKQEAFKDMY DLHHLTLTDN NLDHIPLPLP ENLRALHLQN NNILEMHEDT FCNV, corresponding to amino acids 198-281 of Human Epiphycan.  Run BLAST with  Run BLAST with 
Positive control	Human testis tissue
General notes	<p>The Life Science industry has been in the grips of a reproducibility crisis for a number of years. Abcam is leading the way in addressing this with our range of recombinant monoclonal antibodies and knockout edited cell lines for gold-standard validation. Please check that this product meets your needs before purchasing.</p> <p>If you have any questions, special requirements or concerns, please send us an inquiry and/or contact our Support team ahead of purchase. Recommended alternatives for this product can be found below, along with publications, customer reviews and Q&As</p>

Properties

Form	Liquid
Storage instructions	Shipped at 4°C. Store at -20°C.
Storage buffer	pH: 7.20 Preservative: 0.02% Sodium azide Constituents: 59% PBS, 40% Glycerol (glycerin, glycerine)
Purity	Immunogen affinity purified
Clonality	Polyclonal
Isotype	IgG

Applications

The Abpromise guarantee

Our **Abpromise guarantee** covers the use of ab122449 in the following tested applications.

The application notes include recommended starting dilutions; optimal dilutions/concentrations should be determined by the end user.

Application	Abreviews	Notes
IHC-P		1/200 - 1/500. Perform heat mediated antigen retrieval with citrate buffer pH 6 before commencing with IHC staining protocol.

Target

Function

May have a role in bone formation and also in establishing the ordered structure of cartilage through matrix organization.

Tissue specificity

Cartilage, ligament, and placenta.

Sequence similarities

Belongs to the small leucine-rich proteoglycan (SLRP) family. SLRP class III subfamily. Contains 6 LRR (leucine-rich) repeats. Contains 1 LRRNT domain.

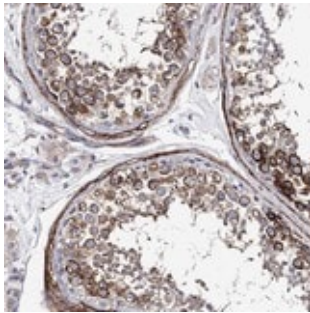
Post-translational modifications

The O-linked polysaccharides on Thr-60 and Ser-96 are probably the mucin type linked to GalNAc. There is one glycosaminoglycan chain, known to be dermatan sulfate, and it is probably the O-glycosylation at Ser-64.

Cellular localization

Secreted > extracellular space > extracellular matrix.

Images



ab122449, at 1/200, staining Epiphykan by in paraffin-embedded Human testis tissue by Immunohistochemistry.

Immunohistochemistry (Formalin/PFA-fixed paraffin-embedded sections) - Anti-Epiphykan antibody (ab122449)

Please note: All products are "FOR RESEARCH USE ONLY. NOT FOR USE IN DIAGNOSTIC PROCEDURES"

Our Abpromise to you: Quality guaranteed and expert technical support

- Replacement or refund for products not performing as stated on the datasheet
- Valid for 12 months from date of delivery

- Response to your inquiry within 24 hours
- We provide support in Chinese, English, French, German, Japanese and Spanish
- Extensive multi-media technical resources to help you
- We investigate all quality concerns to ensure our products perform to the highest standards

If the product does not perform as described on this datasheet, we will offer a refund or replacement. For full details of the Abpromise, please visit <https://www.abcam.com/abpromise> or contact our technical team.

Terms and conditions

- Guarantee only valid for products bought direct from Abcam or one of our authorized distributors