

Product datasheet

Anti-EPS15R antibody [EP1147Y] ab53006

RabMAb

[5 References](#) [2 Images](#)

Overview

Product name	Anti-EPS15R antibody [EP1147Y]
Description	Rabbit monoclonal [EP1147Y] to EPS15R
Host species	Rabbit
Tested applications	Suitable for: WB, IHC-P
Species reactivity	Reacts with: Human
Immunogen	Synthetic peptide. This information is proprietary to Abcam and/or its suppliers.
Positive control	WB: HeLa cell lysate. IHC-P: Human breast carcinoma tissue.
General notes	<p>Our RabMAb[®] technology is a patented hybridoma-based technology for making rabbit monoclonal antibodies. For details on our patents, please refer to RabMAb[®] patents.</p> <p>The Life Science industry has been in the grips of a reproducibility crisis for a number of years. Abcam is leading the way in addressing this with our range of recombinant monoclonal antibodies and knockout edited cell lines for gold-standard validation. Please check that this product meets your needs before purchasing.</p> <p>If you have any questions, special requirements or concerns, please send us an inquiry and/or contact our Support team ahead of purchase. Recommended alternatives for this product can be found below, along with publications, customer reviews and Q&As</p> <p>Mouse, Rat: We have preliminary internal testing data to indicate this antibody may not react with these species. Please contact us for more information.</p>

Properties

Form	Liquid
Storage instructions	Shipped at 4°C. Store at -20°C. Stable for 12 months at -20°C.
Storage buffer	pH: 7.20 Preservative: 0.05% Sodium azide Constituents: 0.1% BSA, 40% Glycerol (glycerin, glycerine), 9.85% Tris glycine, 50% Tissue culture supernatant
Purity	Tissue culture supernatant
Clonality	Monoclonal

Clone number EP1147Y

Isotype IgG

Applications

The Abpromise guarantee Our **Abpromise guarantee** covers the use of ab53006 in the following tested applications.

The application notes include recommended starting dilutions; optimal dilutions/concentrations should be determined by the end user.

Application	Abreviews	Notes
WB		1/50000. Detects a band of approximately 125 kDa (predicted molecular weight: 94 kDa).
IHC-P		Use at an assay dependent concentration. Perform heat mediated antigen retrieval with citrate buffer pH 6 before commencing with IHC staining protocol.

Target

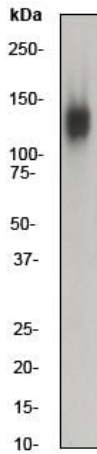
Function Seems to be a constitutive component of clathrin-coated pits that is required for receptor-mediated endocytosis. Involved in endocytosis of integrin beta-1 (ITGB1) and transferrin receptor (TFR); internalization of ITGB1 as DAB2-dependent cargo but not TFR seems to require association with DAB2.

Sequence similarities Contains 1 EF-hand domain.
Contains 3 EH domains.

Post-translational modifications Phosphorylated on tyrosine residues by EGFR.

Cellular localization Cell membrane. Nucleus. Membrane > coated pit. Localized to plasma membrane coated pits.

Images



Western blot - Anti-EPS15R antibody [EP1147Y] (ab53006)

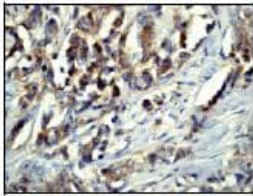
Anti-EPS15R antibody [EP1147Y] (ab53006) at 1/50000 dilution + HeLa cell lysate at 10 µg

Secondary

goat anti-rabbit HRP labelled at 1/2000 dilution

Predicted band size: 94 kDa

Observed band size: 125 kDa



Immunohistochemistry (Formalin/PFA-fixed paraffin-embedded sections) - Anti-EPS15R antibody [EP1147Y] (ab53006)

ab53006, at a 1/50 dilution, staining EPS15R in human breast carcinoma, using Immunohistochemistry, Paraffin embedded tissue.

Perform heat mediated antigen retrieval with citrate buffer pH 6 before commencing with IHC staining protocol.

Please note: All products are "FOR RESEARCH USE ONLY. NOT FOR USE IN DIAGNOSTIC PROCEDURES"

Our Abpromise to you: Quality guaranteed and expert technical support

- Replacement or refund for products not performing as stated on the datasheet
- Valid for 12 months from date of delivery
- Response to your inquiry within 24 hours
- We provide support in Chinese, English, French, German, Japanese and Spanish
- Extensive multi-media technical resources to help you
- We investigate all quality concerns to ensure our products perform to the highest standards

If the product does not perform as described on this datasheet, we will offer a refund or replacement. For full details of the Abpromise, please visit <https://www.abcam.com/abpromise> or contact our technical team.

Terms and conditions

- Guarantee only valid for products bought direct from Abcam or one of our authorized distributors