

## Product datasheet

### Anti-EPS8 antibody [EPR6112] $\alpha$ b124882

Recombinant **RabMAb**

[2 References](#) [3 Images](#)

#### Overview

<b>Product name</b>	Anti-EPS8 antibody [EPR6112]
<b>Description</b>	Rabbit monoclonal [EPR6112] to EPS8
<b>Host species</b>	Rabbit
<b>Tested applications</b>	<b>Suitable for:</b> WB, IHC-P <b>Unsuitable for:</b> Flow Cyt or IP
<b>Species reactivity</b>	<b>Reacts with:</b> Human
<b>Immunogen</b>	Synthetic peptide within Human EPS8 aa 1-100 (N terminal). The exact sequence is proprietary.
<b>Positive control</b>	HeLa, A375, 293T, and K562 cell lysates, Human kidney tissue
<b>General notes</b>	<p>This product is a recombinant monoclonal antibody, which offers several advantages including:</p> <ul style="list-style-type: none"> <li>- High batch-to-batch consistency and reproducibility</li> <li>- Improved sensitivity and specificity</li> <li>- Long-term security of supply</li> <li>- Animal-free production</li> </ul> <p>For more information <a href="#">see here</a>.</p> <p>Our RabMAb<sup>®</sup> technology is a patented hybridoma-based technology for making rabbit monoclonal antibodies. For details on our patents, please refer to <a href="#">RabMAb<sup>®</sup> patents</a>.</p> <p>Mouse, Rat: We have preliminary internal testing data to indicate this antibody may not react with these species. Please contact us for more information.</p>

#### Properties

<b>Form</b>	Liquid
<b>Storage instructions</b>	Shipped at 4°C. Store at -20°C. Stable for 12 months at -20°C.
<b>Storage buffer</b>	<p>pH: 7.20</p> <p>Preservative: 0.05% Sodium azide</p> <p>Constituents: 40% Glycerol (glycerin, glycerine), 9.85% Tris glycine, 50% Tissue culture supernatant</p>
<b>Purity</b>	Protein A purified
<b>Clonality</b>	Monoclonal

Clone number                      EPR6112

Isotype                                IgG

## Applications

**The Abpromise guarantee**            Our **Abpromise guarantee** covers the use of ab124882 in the following tested applications. The application notes include recommended starting dilutions; optimal dilutions/concentrations should be determined by the end user.

Application	Abreviews	Notes
WB		1/1000 - 1/10000. Detects a band of approximately 97 kDa (predicted molecular weight: 92 kDa).
IHC-P		1/100 - 1/250. Perform heat mediated antigen retrieval with citrate buffer pH 6 before commencing with IHC staining protocol. antigen retrieval is recommended.

**Application notes**                      Is unsuitable for Flow Cyt or IP.

## Target

**Function**                                      Upon binding to EGF receptor enhances EGF-dependent mitogenic signals. Can bind multiple cellular targets.

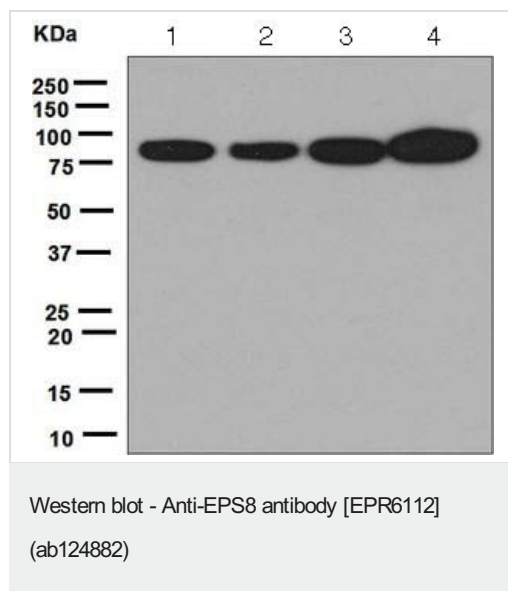
**Tissue specificity**                              Expressed in all tissues analyzed, including heart, brain, placenta, lung, liver, skeletal muscle, kidney and pancreas. Expressed in all epithelial and fibroblastic lines examined and in some, but not all, hematopoietic cells.

**Sequence similarities**                              Belongs to the EPS8 family.  
Contains 1 PH domain.  
Contains 1 SH3 domain.

**Domain**    The SH3 domain mediates interaction with SHB.

**Post-translational modifications**                              Phosphorylated by several receptor tyrosine kinases.

## Images



**All lanes :** Anti-EPS8 antibody [EPR6112] (ab124882) at 1/1000 dilution

**Lane 1 :** HeLa cell lysate

**Lane 2 :** A375 cell lysate

**Lane 3 :** 293T cell lysate

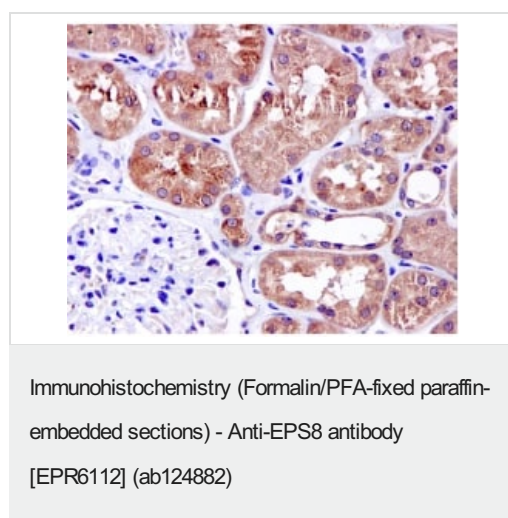
**Lane 4 :** K562 cell lysate

Lysates/proteins at 10 µg per lane.

### Secondary

**All lanes :** HRP labelled goat anti-rabbit at 1/2000 dilution

**Predicted band size:** 92 kDa



Staining of EPS8 in Paraffin-embedded Human kidney tissue by Immunohistochemistry using ab124882 at a dilution of 1/100.

Perform heat mediated antigen retrieval with citrate buffer pH 6 before commencing with IHC staining protocol.

Why choose a recombinant antibody?

**Research with confidence**  
Consistent and reproducible results

**Long-term and scalable supply**  
Recombinant technology

**Success from the first experiment**  
Confirmed specificity

**Ethical standards compliant**  
Animal-free production

Anti-EPS8 antibody [EPR6112] (ab124882)

**Please note:** All products are "FOR RESEARCH USE ONLY. NOT FOR USE IN DIAGNOSTIC PROCEDURES"

### **Our Abpromise to you: Quality guaranteed and expert technical support**

---

- Replacement or refund for products not performing as stated on the datasheet
- Valid for 12 months from date of delivery
- Response to your inquiry within 24 hours
  
- We provide support in Chinese, English, French, German, Japanese and Spanish
- Extensive multi-media technical resources to help you
- We investigate all quality concerns to ensure our products perform to the highest standards

If the product does not perform as described on this datasheet, we will offer a refund or replacement. For full details of the Abpromise, please visit <https://www.abcam.com/abpromise> or contact our technical team.

### **Terms and conditions**

---

- Guarantee only valid for products bought direct from Abcam or one of our authorized distributors