


## Product datasheet

# Anti-EPX antibody ab65319

[1 References](#) [1 Image](#)

### Overview

---

<b>Product name</b>	Anti-EPX antibody
<b>Description</b>	Rabbit polyclonal to EPX
<b>Host species</b>	Rabbit
<b>Specificity</b>	From Mar 2024, QC testing of replenishment batches of this polyclonal changed. All tested and expected application and reactive species combinations are still covered by our Abcam product promise. However, we no longer test all applications. For more information on a specific batch, please contact our Scientific Support who will be happy to help.
<b>Tested applications</b>	<b>Suitable for:</b> WB
<b>Species reactivity</b>	<b>Reacts with:</b> Human <b>Predicted to work with:</b> Mouse, Rat 
<b>Immunogen</b>	Synthetic peptide within Human EPX aa 400-500 conjugated to keyhole limpet haemocyanin. The exact immunogen sequence used to generate this antibody is proprietary information. If additional detail on the immunogen is needed to determine the suitability of the antibody for your needs, please <b>contact</b> our Scientific Support team to discuss your requirements. (Peptide available as <a href="#">ab104963</a> )
<b>Positive control</b>	This antibody gave a positive signal in the following human tissue lysates: Bone Marrow; Thymus; Spleen.
<b>General notes</b>	<p>The Life Science industry has been in the grips of a reproducibility crisis for a number of years. Abcam is leading the way in addressing this with our range of recombinant monoclonal antibodies and knockout edited cell lines for gold-standard validation. Please check that this product meets your needs before purchasing.</p> <p>If you have any questions, special requirements or concerns, please send us an inquiry and/or contact our Support team ahead of purchase. Recommended alternatives for this product can be found below, along with publications, customer reviews and Q&amp;As</p>

### Properties

---

<b>Form</b>	Liquid
<b>Storage instructions</b>	Shipped at 4°C. Store at +4°C short term (1-2 weeks). Upon delivery aliquot. Store at -20°C or -80°C. Avoid freeze / thaw cycle.
<b>Storage buffer</b>	pH: 7.40

Preservative: 0.02% Sodium azide

Constituent: PBS

Batches of this product that have a concentration < 1mg/ml may have BSA added as a stabilising agent. If you would like information about the formulation of a specific lot, please contact our scientific support team who will be happy to help.

**Purity** Immunogen affinity purified  
**Clonality** Polyclonal  
**Isotype** IgG

## Applications

**The Abpromise guarantee** Our **Abpromise guarantee** covers the use of ab65319 in the following tested applications.

The application notes include recommended starting dilutions; optimal dilutions/concentrations should be determined by the end user.

Application	Abreviews	Notes
WB		Use a concentration of 1 µg/ml. Detects a band of approximately 70 kDa (predicted molecular weight: 81 kDa).

## Target

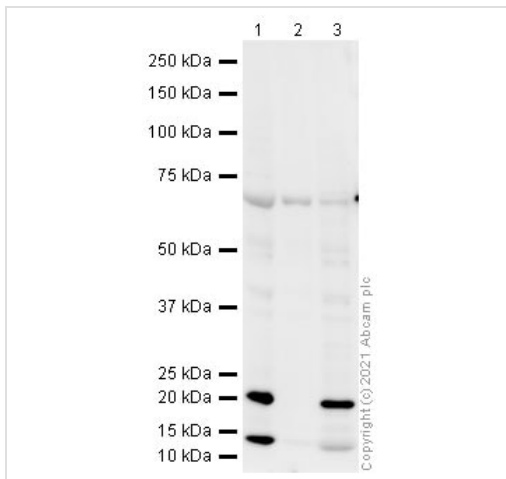
**Function** Mediates tyrosine nitration of secondary granule proteins in mature resting eosinophils. Shows significant inhibitory activity towards Mycobacterium tuberculosis H37Rv by inducing bacterial fragmentation and lysis.

**Involvement in disease** Defects in EPX are the cause of eosinophil peroxidase deficiency (EPD) [MIM:261500]. EPD is an autosomal recessive defect where anomalous eosinophils are characterized by nuclear hypersegmentation, hypogranulation, and negative peroxidase and phospholipid staining.

**Sequence similarities** Belongs to the peroxidase family. XPO subfamily.

**Cellular localization** Cytoplasmic granule. Cytoplasmic granules of eosinophils.

## Images



Western blot - Anti-EPX antibody (ab65319)

**All lanes :** Anti-EPX antibody (ab65319) at 1 µg/ml

**Lane 1 :** Human Bone Marrow lysate

**Lane 2 :** Human Thymus lysate

**Lane 3 :** Human Spleen lysate

Lysates/proteins at 10 µg per lane.

**Secondary**

**All lanes :** Goat polyclonal to Rabbit IgG - H&L - Pre-Adsorbed (HRP) at 1/50000 dilution

Developed using the ECL technique.

Performed under reducing conditions.

**Predicted band size:** 81 kDa

**Observed band size:** 70 kDa

**Exposure time:** 20 minutes

This blot was produced using a 4-12% Bis-tris gel under the MOPS buffer system. The gel was run at 200V for 50 minutes before being transferred onto a Nitrocellulose membrane at 30V for 70 minutes. The membrane was then blocked for an hour using 2% Bovine Serum Albumin before being incubated with ab65319 overnight at 4°C. Antibody binding was detected using an anti-rabbit antibody conjugated to HRP, and visualised using ECL development solution **ab133406**.

**Please note:** All products are "FOR RESEARCH USE ONLY. NOT FOR USE IN DIAGNOSTIC PROCEDURES"

**Our Abpromise to you: Quality guaranteed and expert technical support**

- Replacement or refund for products not performing as stated on the datasheet
- Valid for 12 months from date of delivery
- Response to your inquiry within 24 hours
- We provide support in Chinese, English, French, German, Japanese and Spanish
- Extensive multi-media technical resources to help you
- We investigate all quality concerns to ensure our products perform to the highest standards

If the product does not perform as described on this datasheet, we will offer a refund or replacement. For full details of the Abpromise,

please visit <https://www.abcam.com/abpromise> or contact our technical team.

## **Terms and conditions**

---

- Guarantee only valid for products bought direct from Abcam or one of our authorized distributors