

Anti-ErbB3 / HER3 (phospho Y1197) antibody [EPR5806] ab133444

Recombinant RabMAb

2 Images

Overview

| | |
|----------------------------|--|
| Product name | Anti-ErbB3 / HER3 (phospho Y1197) antibody [EPR5806] |
| Description | Rabbit monoclonal [EPR5806] to ErbB3 / HER3 (phospho Y1197) |
| Host species | Rabbit |
| Tested applications | Suitable for: WB Unsuitable for: Flow Cyt, ICC/IF or IHC-P |
| Species reactivity | Reacts with: Human |
| Immunogen | Synthetic peptide within Human ErbB3/ HER3 (phospho Y1197). The exact sequence is proprietary. |
| Positive control | Lysate of SKBR3 cells treated with neuregulin. |
| General notes | <p>This product is a recombinant monoclonal antibody, which offers several advantages including:</p> <ul style="list-style-type: none"> - High batch-to-batch consistency and reproducibility - Improved sensitivity and specificity - Long-term security of supply - Animal-free production <p>For more information see here.</p> <p>Our RabMAb[®] technology is a patented hybridoma-based technology for making rabbit monoclonal antibodies. For details on our patents, please refer to RabMAb[®] patents.</p> <p>Mouse, Rat: We have preliminary internal testing data to indicate this antibody may not react with these species. Please contact us for more information.</p> |

Properties

| | |
|-----------------------------|--|
| Form | Liquid |
| Storage instructions | Shipped at 4°C. Store at -20°C. Stable for 12 months at -20°C. |
| Storage buffer | <p>pH: 7.2</p> <p>Preservative: 0.05% Sodium azide</p> <p>Constituents: 0.1% BSA, 40% Glycerol (glycerin, glycerine), 9.85% Tris glycine, 50% Tissue culture supernatant</p> |

| | |
|---------------------|----------------------------|
| Purity | Tissue culture supernatant |
| Clonality | Monoclonal |
| Clone number | EPR5806 |
| Isotype | IgG |

Applications

The Abpromise guarantee Our **Abpromise guarantee** covers the use of ab133444 in the following tested applications. The application notes include recommended starting dilutions; optimal dilutions/concentrations should be determined by the end user.

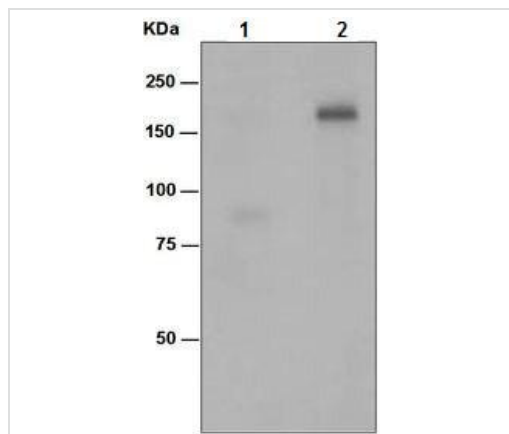
| Application | Abreviews | Notes |
|-------------|-----------|---|
| WB | | 1/10000 - 1/50000. Detects a band of approximately 185 kDa (predicted molecular weight: 148 kDa). |

Application notes Is unsuitable for Flow Cyt, ICC/IF or IHC-P.

Target

| | |
|---|---|
| Function | Binds and is activated by neuregulins and NTAK. |
| Tissue specificity | Epithelial tissues and brain. |
| Involvement in disease | Defects in ERBB3 are the cause of lethal congenital contracture syndrome type 2 (LCCS2) [MIM:607598]; also called Israeli Bedouin multiple contracture syndrome type A. LCCS2 is an autosomal recessive neurogenic form of a neonatally lethal arthrogryposis that is associated with atrophy of the anterior horn of the spinal cord. The LCCS2 syndrome is characterized by multiple joint contractures, anterior horn atrophy in the spinal cord, and a unique feature of a markedly distended urinary bladder. The phenotype suggests a spinal cord neuropathic etiology. |
| Sequence similarities | Belongs to the protein kinase superfamily. Tyr protein kinase family. EGF receptor subfamily. Contains 1 protein kinase domain. |
| Developmental stage | Overexpressed in a subset of human mammary tumors. |
| Domain | The cytoplasmic part of the receptor may interact with the SH2 or SH3 domains of many signal-transducing proteins. |
| Post-translational modifications | Ligand-binding increases phosphorylation on tyrosine residues and promotes its association with the p85 subunit of phosphatidylinositol 3-kinase. |
| Cellular localization | Secreted and Cell membrane. |

Images



Western blot - Anti-ErbB3 / HER3 (phospho Y1197) antibody [EPR5806] (ab133444)

All lanes : Anti-ErbB3 / HER3 (phospho Y1197) antibody [EPR5806] (ab133444) at 1/10000 dilution

Lane 1 : SK-BR-3 (Human mammary gland adenocarcinoma cell line) cell lysate

Lane 2 : Neuregulin treated SK-BR-3 (Human mammary gland adenocarcinoma cell line) cell lysate

Lysates/proteins at 10 µg per lane.

Secondary

All lanes : Goat anti-rabbit HRP conjugated antibody at 1/2000 dilution

Predicted band size: 148 kDa

Observed band size: 185 kDa

Why choose a recombinant antibody?

| | |
|--|--|
|  <p>Research with confidence Consistent and reproducible results</p> |  <p>Long-term and scalable supply Recombinant technology</p> |
|  <p>Success from the first experiment Confirmed specificity</p> |  <p>Ethical standards compliant Animal-free production</p> |

Anti-ErbB3 / HER3 (phospho Y1197) antibody [EPR5806] (ab133444)

Please note: All products are "FOR RESEARCH USE ONLY. NOT FOR USE IN DIAGNOSTIC PROCEDURES"

Our Abpromise to you: Quality guaranteed and expert technical support

- Replacement or refund for products not performing as stated on the datasheet
- Valid for 12 months from date of delivery
- Response to your inquiry within 24 hours
- We provide support in Chinese, English, French, German, Japanese and Spanish
- Extensive multi-media technical resources to help you
- We investigate all quality concerns to ensure our products perform to the highest standards

If the product does not perform as described on this datasheet, we will offer a refund or replacement. For full details of the Abpromise, please visit <https://www.abcam.com/abpromise> or contact our technical team.

Terms and conditions

- Guarantee only valid for products bought direct from Abcam or one of our authorized distributors