



Product datasheet

Anti-ErbB3 / HER3 (phospho Y1328) antibody ab131444

[2 References](#) [3 Images](#)

Overview

| | |
|----------------------------|---|
| Product name | Anti-ErbB3 / HER3 (phospho Y1328) antibody |
| Description | Rabbit polyclonal to ErbB3 / HER3 (phospho Y1328) |
| Host species | Rabbit |
| Tested applications | Suitable for: WB, IHC-P, ICC/IF |
| Species reactivity | Reacts with: Human |
| Immunogen | Synthetic peptide corresponding to Human ErbB3/ HER3 (phospho Y1328) conjugated to keyhole limpet haemocyanin. Synthetic phosphopeptide conjugated to KLH, surrounding the phosphorylation site of Tyrosine 1328 (P-D-Y(p)-W-H) of Human ErbB3/ HER3. <div>  Run BLAST with  Run BLAST with </div> |
| Positive control | A431 cell extract treated with EGF; MCF7 cells; Human breast carcinoma tissue. |
| General notes | <p>The Life Science industry has been in the grips of a reproducibility crisis for a number of years. Abcam is leading the way in addressing this with our range of recombinant monoclonal antibodies and knockout edited cell lines for gold-standard validation. Please check that this product meets your needs before purchasing.</p> <p>If you have any questions, special requirements or concerns, please send us an inquiry and/or contact our Support team ahead of purchase. Recommended alternatives for this product can be found below, along with publications, customer reviews and Q&As</p> |

Properties

| | |
|-----------------------------|---|
| Form | Liquid |
| Storage instructions | Shipped at 4°C. Store at -20°C. Stable for 12 months at -20°C. |
| Storage buffer | <p>pH: 7.40</p> <p>Preservative: 0.02% Sodium azide</p> <p>Constituents: 49% PBS, 0.88% Sodium chloride, 50% Glycerol</p> <p>PBS is without Mg²⁺ and Ca²⁺</p> |
| Purity | Immunogen affinity purified |
| Purification notes | ab131444 was purified by using epitope specific phosphopeptide. Non-phospho specific |

antibodies were removed by chromatography using non-phosphopeptide.

Clonality

Polyclonal

Isotype

IgG

Applications**The Abpromise guarantee**

Our **Abpromise guarantee** covers the use of ab131444 in the following tested applications.

The application notes include recommended starting dilutions; optimal dilutions/concentrations should be determined by the end user.

| Application | Abreviews | Notes |
|-------------|-----------|--|
| WB | | 1/500 - 1/1000. Detects a band of approximately 185 kDa (predicted molecular weight: 148 kDa). |
| IHC-P | | 1/50 - 1/100. |
| ICC/IF | | 1/100 - 1/200. |

Target**Function**

Binds and is activated by neuregulins and NTAK.

Tissue specificity

Epithelial tissues and brain.

Involvement in disease

Defects in ERBB3 are the cause of lethal congenital contracture syndrome type 2 (LCCS2) [MIM:607598]; also called Israeli Bedouin multiple contracture syndrome type A. LCCS2 is an autosomal recessive neurogenic form of a neonatally lethal arthrogryposis that is associated with atrophy of the anterior horn of the spinal cord. The LCCS2 syndrome is characterized by multiple joint contractures, anterior horn atrophy in the spinal cord, and a unique feature of a markedly distended urinary bladder. The phenotype suggests a spinal cord neuropathic etiology.

Sequence similarities

Belongs to the protein kinase superfamily. Tyr protein kinase family. EGF receptor subfamily. Contains 1 protein kinase domain.

Developmental stage

Overexpressed in a subset of human mammary tumors.

Domain

The cytoplasmic part of the receptor may interact with the SH2 or SH3 domains of many signal-transducing proteins.

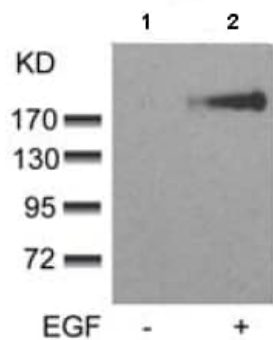
Post-translational modifications

Ligand-binding increases phosphorylation on tyrosine residues and promotes its association with the p85 subunit of phosphatidylinositol 3-kinase.

Cellular localization

Secreted and Cell membrane.

Images



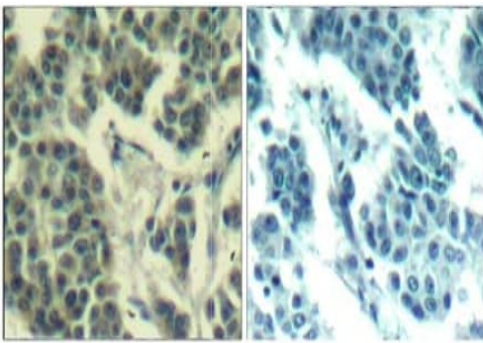
Western blot - Anti-ErbB3 / HER3 (phospho Y1328) antibody (ab131444)

All lanes : Anti-ErbB3 / HER3 (phospho Y1328) antibody (ab131444) at 1/500 dilution

Lane 1 : A431 cell extract, untreated

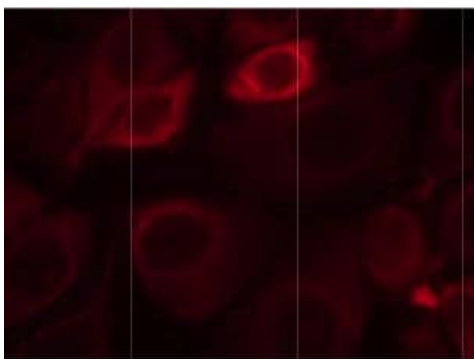
Lane 2 : A431 cell extract, treated with EGF

Predicted band size: 148 kDa



Immunohistochemistry (Formalin/PFA-fixed paraffin-embedded sections) - Anti-ErbB3 / HER3 (phospho Y1328) antibody (ab131444)

Immunohistochemical analysis of paraffin embedded Human breast carcinoma tissue labelling ErbB3 / HER3 (phospho Y1328) with ab131444 antibody at 1/50 dilution. The image on the right is treated with the synthesized peptide.



Immunocytochemistry/ Immunofluorescence - Anti-ErbB3 / HER3 (phospho Y1328) antibody (ab131444)

Immunofluorescence of methanol-fixed MCF7 cells labelling EErbB3 / HER3 (phospho Y1328) with ab131444 antibody at 1/100 dilution.

Please note: All products are "FOR RESEARCH USE ONLY. NOT FOR USE IN DIAGNOSTIC PROCEDURES"

Our Abpromise to you: Quality guaranteed and expert technical support

- Replacement or refund for products not performing as stated on the datasheet
- Valid for 12 months from date of delivery
- Response to your inquiry within 24 hours

- We provide support in Chinese, English, French, German, Japanese and Spanish
- Extensive multi-media technical resources to help you
- We investigate all quality concerns to ensure our products perform to the highest standards

If the product does not perform as described on this datasheet, we will offer a refund or replacement. For full details of the Abpromise, please visit <https://www.abcam.com/abpromise> or contact our technical team.

Terms and conditions

- Guarantee only valid for products bought direct from Abcam or one of our authorized distributors