


# Anti-ErbB3 / HER3 (phospho Y1328) antibody [EPR5809] ab133459

Recombinant RabMAb

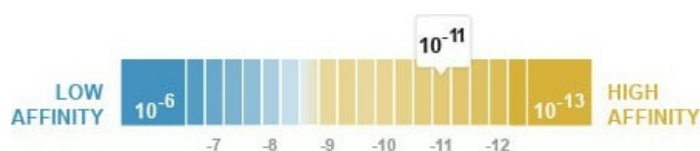
[3 References](#) [3 Images](#)

### Overview

Product name	Anti-ErbB3 / HER3 (phospho Y1328) antibody [EPR5809]
Description	Rabbit monoclonal [EPR5809] to ErbB3 / HER3 (phospho Y1328)
Host species	Rabbit
Specificity	This antibody only detects ErbB 3 phosphorylated at Tyrosine 1328.
Tested applications	<b>Suitable for:</b> WB <b>Unsuitable for:</b> Flow Cyt, ICC/IF, IHC-P or IP
Species reactivity	<b>Reacts with:</b> Human <b>Predicted to work with:</b> Mouse, Rat 
Immunogen	Synthetic peptide. This information is proprietary to Abcam and/or its suppliers.
Positive control	T47-D cell lysate treated with Neuregulin.
General notes	This product is a recombinant monoclonal antibody, which offers several advantages including: <ul style="list-style-type: none"> <li>- High batch-to-batch consistency and reproducibility</li> <li>- Improved sensitivity and specificity</li> <li>- Long-term security of supply</li> <li>- Animal-free production</li> </ul> For more information <a href="#">see here</a> . Our RabMAb <sup>®</sup> technology is a patented hybridoma-based technology for making rabbit monoclonal antibodies. For details on our patents, please refer to <a href="#">RabMAb<sup>®</sup> patents</a> .

### Properties

Form	Liquid
Storage instructions	Shipped at 4°C. Store at -20°C. Stable for 12 months at -20°C.
Dissociation constant (K <sub>D</sub> )	K <sub>D</sub> = 1.31 x 10 <sup>-11</sup> M



[Learn more about K<sub>D</sub>](#)

<b>Storage buffer</b>	pH: 7.20 Preservative: 0.01% Sodium azide Constituents: 9% PBS, 40% Glycerol (glycerin, glycerine), 0.05% BSA, 50% Tissue culture supernatant
<b>Purity</b>	Tissue culture supernatant
<b>Clonality</b>	Monoclonal
<b>Clone number</b>	EPR5809
<b>Isotype</b>	IgG

## Applications

**The Abpromise guarantee** Our **Abpromise guarantee** covers the use of ab133459 in the following tested applications. The application notes include recommended starting dilutions; optimal dilutions/concentrations should be determined by the end user.

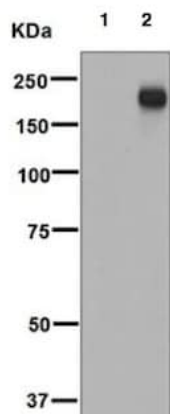
Application	Abreviews	Notes
WB		1/1000 - 1/10000. Predicted molecular weight: 148 kDa.

**Application notes** Is unsuitable for Flow Cyt, ICC/IF, IHC-P or IP.

## Target

<b>Function</b>	Binds and is activated by neuregulins and NTAK.
<b>Tissue specificity</b>	Epithelial tissues and brain.
<b>Involvement in disease</b>	Defects in ERBB3 are the cause of lethal congenital contracture syndrome type 2 (LCCS2) [MIM:607598]; also called Israeli Bedouin multiple contracture syndrome type A. LCCS2 is an autosomal recessive neurogenic form of a neonatally lethal arthrogryposis that is associated with atrophy of the anterior horn of the spinal cord. The LCCS2 syndrome is characterized by multiple joint contractures, anterior horn atrophy in the spinal cord, and a unique feature of a markedly distended urinary bladder. The phenotype suggests a spinal cord neuropathic etiology.
<b>Sequence similarities</b>	Belongs to the protein kinase superfamily. Tyr protein kinase family. EGF receptor subfamily. Contains 1 protein kinase domain.
<b>Developmental stage</b>	Overexpressed in a subset of human mammary tumors.
<b>Domain</b>	The cytoplasmic part of the receptor may interact with the SH2 or SH3 domains of many signal-transducing proteins.
<b>Post-translational modifications</b>	Ligand-binding increases phosphorylation on tyrosine residues and promotes its association with the p85 subunit of phosphatidylinositol 3-kinase.
<b>Cellular localization</b>	Secreted and Cell membrane.

## Images



Western blot - Anti-ErbB3 / HER3 (phospho Y1328) antibody [EPR5809] (ab133459)

**All lanes :** Anti-ErbB3 / HER3 (phospho Y1328) antibody [EPR5809] (ab133459) at 1/1000 dilution

**Lane 1 :** T47-D cell lysate untreated

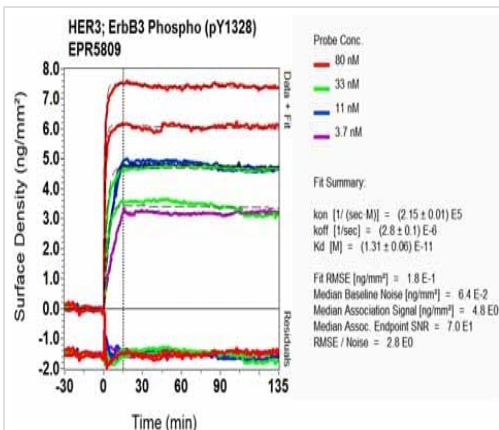
**Lane 2 :** T47-D cell lysate treated with Neuregulin

Lysates/proteins at 10 µg per lane.

### Secondary

**All lanes :** HRP labelled goat anti-rabbit IgG at 1/2000 dilution

**Predicted band size:** 148 kDa



OIR-D Scanning - Anti-ErbB3 / HER3 (phospho Y1328) antibody [EPR5809] (ab133459)

Equilibrium disassociation constant ( $K_D$ )

Learn more about  $K_D$

[Click here to learn more about  \$K\_D\$](#)

### Why choose a recombinant antibody?



**Research with confidence**  
Consistent and reproducible results



**Long-term and scalable supply**  
Recombinant technology



**Success from the first experiment**  
Confirmed specificity



**Ethical standards compliant**  
Animal-free production

Anti-ErbB3 / HER3 (phospho Y1328) antibody [EPR5809] (ab133459)

**Please note:** All products are "FOR RESEARCH USE ONLY. NOT FOR USE IN DIAGNOSTIC PROCEDURES"

### **Our Abpromise to you: Quality guaranteed and expert technical support**

---

- Replacement or refund for products not performing as stated on the datasheet
- Valid for 12 months from date of delivery
- Response to your inquiry within 24 hours
- We provide support in Chinese, English, French, German, Japanese and Spanish
- Extensive multi-media technical resources to help you
- We investigate all quality concerns to ensure our products perform to the highest standards

If the product does not perform as described on this datasheet, we will offer a refund or replacement. For full details of the Abpromise, please visit <https://www.abcam.com/abpromise> or contact our technical team.

### **Terms and conditions**

---

- Guarantee only valid for products bought direct from Abcam or one of our authorized distributors