

Product datasheet

Anti-ErbB4 / HER4+ErbB2 / HER2 antibody [EPR22665-104] α b219208

Recombinant RabMAb

[2 References](#) [6 Images](#)

Overview

Product name	Anti-ErbB4 / HER4+ErbB2 / HER2 antibody [EPR22665-104]
Description	Rabbit monoclonal [EPR22665-104] to ErbB2 / HER2 + ErbB4 / HER4
Host species	Rabbit
Specificity	ab219208 is not recommended for mouse IHC.
Tested applications	Suitable for: WB, IHC-P, Indirect ELISA Unsuitable for: Flow Cyt (Intra), ICC/IF or IP
Species reactivity	Reacts with: Mouse, Human, Recombinant fragment
Immunogen	Recombinant fragment. This information is proprietary to Abcam and/or its suppliers.
Positive control	WB: HEK-293, T-47D, MCF7 and 4T1 lysates, His-tagged Recombinant Human ErbB2 protein and His-tagged Recombinant Human ErbB4 protein. IHC-P: Human breast carcinoma tissue. I-ELISA: Human ERBB2 Recombinant Protein and Human ERBB4 Recombinant Protein.
General notes	<p>This product is a recombinant monoclonal antibody, which offers several advantages including:</p> <ul style="list-style-type: none"> - High batch-to-batch consistency and reproducibility - Improved sensitivity and specificity - Long-term security of supply - Animal-free production <p>For more information see here.</p> <p>Our RabMAb[®] technology is a patented hybridoma-based technology for making rabbit monoclonal antibodies. For details on our patents, please refer to RabMAb[®] patents.</p>

Properties

Form	Liquid
Storage instructions	Shipped at 4°C. Store at +4°C short term (1-2 weeks). Upon delivery aliquot. Store at -20°C long term. Avoid freeze / thaw cycle.
Storage buffer	pH: 7.2 Preservative: 0.01% Sodium azide Constituents: PBS, 40% Glycerol (glycerin, glycerine), 0.05% BSA

Purity	Protein A purified
Clonality	Monoclonal
Clone number	EPR22665-104
Isotype	IgG

Applications

The Abpromise guarantee Our **Abpromise guarantee** covers the use of ab219208 in the following tested applications.

The application notes include recommended starting dilutions; optimal dilutions/concentrations should be determined by the end user.

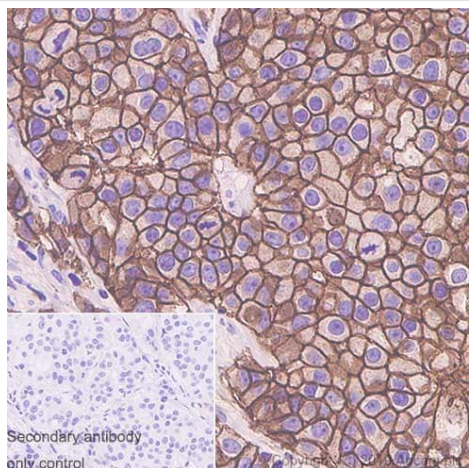
Application	Abreviews	Notes
WB		1/1000. Predicted molecular weight: 147 kDa.
IHC-P		1/1000.
Indirect ELISA		Use at an assay dependent concentration.

Application notes Is unsuitable for Flow Cyt (Intra), ICC/IF or IP.

Target

Cellular localization ErbB2 / HER2: Cytoplasm. Nucleus and Cell membrane. Cytoplasm, perinuclear region. Nucleus. Translocation to the nucleus requires endocytosis, probably endosomal sorting and is mediated by importin beta-1/KPNB1. ErbB4 / HER4: Membrane and Nucleus. Following proteolytical processing E4ICD (E4ICD1 or E4ICD2 generated from the respective isoforms) is translocated to the nucleus. Significantly more E4ICD2 than E4ICD1 is found in the nucleus. E4ICD2 colocalizes with YAP1 in the nucleus.

Images

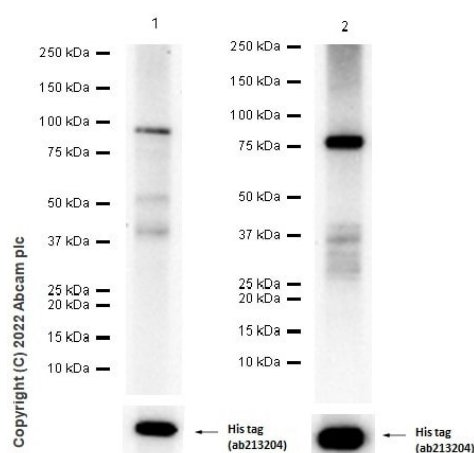


Immunohistochemistry (Formalin/PFA-fixed paraffin-embedded sections) - Anti-ErbB4 / HER4+ErbB2 / HER2 antibody [EPR22665-104] (ab219208)

Immunohistochemical analysis of paraffin-embedded Human breast carcinoma tissue labeling ErbB4 / HER4 with ab219208 at 1/1000 dilution followed by a ready to use Goat Anti-Rabbit IgG H&L (HRP Polymer). Positive staining on the human breast carcinoma (PMID: 19239686) is observed. The section was incubated with ab219208 for 15 mins at room temperature. The immunostaining staining was performed on a Leica Biosystems BOND® RX instrument. Counterstained with Hematoxylin.

Secondary antibody only control: Secondary antibody is a ready to use Goat Anti-Rabbit IgG H&L (HRP Polymer).

Heat mediated antigen retrieval with Tris-EDTA buffer (pH 9.0, epitope retrieval solution 2) for 20 mins.



Western blot - Anti-ErbB4 / HER4+ErbB2 / HER2 antibody [EPR22665-104] (ab219208)

All lanes : Anti-ErbB4 / HER4+ErbB2 / HER2 antibody [EPR22665-104] (ab219208) at 1/1000 dilution

Lane 1 : His-tagged Recombinant Human ErbB2 protein (aa676-1255)

Lane 2 : His-tagged Recombinant Human ErbB4 protein (aa676-1308)

Secondary

All lanes : Goat Anti-Rabbit IgG H&L (HRP) ([ab97051](#)) at 1/20000 dilution

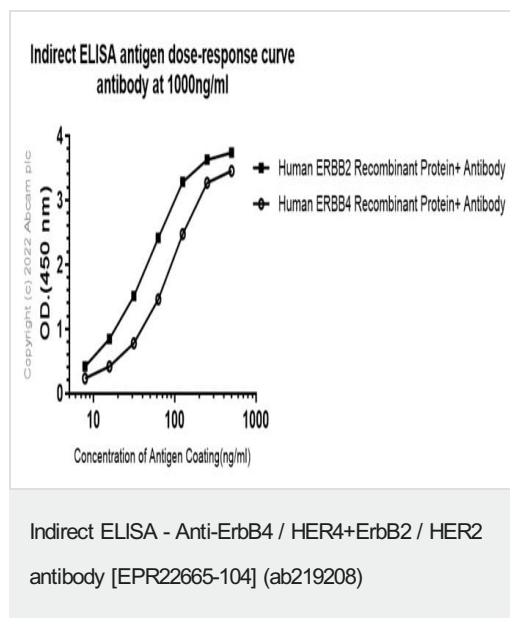
Predicted band size: 147 kDa

Observed band size: 80,90 kDa

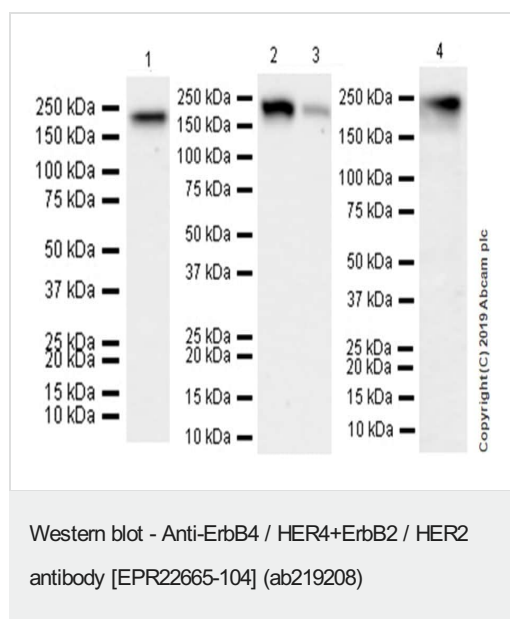
Exposure time: 180 seconds

Blocking buffer and concentration : 5% NFDM/TBST

Diluting buffer and concentration : 5% NFDM /TBST



Indirect ELISA analysis of Human ERBB2 Recombinant Protein and Human ERBB4 Recombinant Protein at varying antigen concentrations of 500-0 ng/ml using ab219208 at 1000 ng/mL and secondary antibody Goat Anti-Rabbit IgG H&L (HRP) at 1/50000 dilution. Substrate solution was 3,3',5,5'-Tetramethylbenzidine (TMB).



All lanes : Anti-ErbB4 / HER4+ErbB2 / HER2 antibody
[EPR22665-104] (ab219208) at 1/1000 dilution

Lane 1 : HEK-293 (human embryonic kidney epithelial cell) whole
cell lysate

Lane 2 : T-47D (human ductal breast epithelial tumor epithelial cell)
whole cell lysate

Lane 3 : MCF7 (human breast adenocarcinoma epithelial cell)
whole cell lysate

Lane 4 : 4T1 (mouse mammary gland carcinoma epithelial cell)
whole cell lysate

Lysates/proteins at 20 µg per lane.

Secondary

All lanes : Goat Anti-Rabbit IgG H&L (HRP) ([ab97051](#)) at
1/100000 dilution

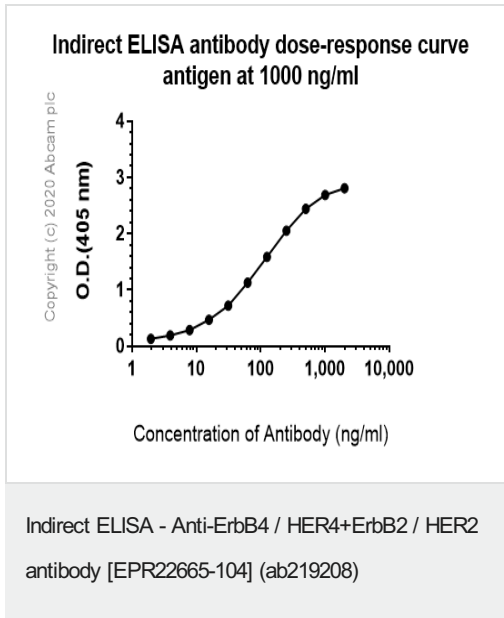
Predicted band size: 147 kDa

Observed band size: 180 kDa

Blocking and diluting buffer and concentration: 5% NFDM/TBST





The molecular weight observed is consistent with what has been described in the literature (PMID: 22761786) Lane 4 was developed using a higher sensitivity ECL substrate.

Exposure time: Lane 1:70 seconds; Lanes 2-3:48 seconds; Lane 4: 3 minutes.



ELISA analysis of Human ERBB4 recombinant protein at 1000 ng/mL with ab219208. An Alkaline Phosphatase-conjugated AffiniPure Goat Anti-Rabbit IgG (H+L) at 1/2500 dilution was used as the secondary antibody.

Why choose a recombinant antibody?

 <p>Research with confidence Consistent and reproducible results</p>	 <p>Long-term and scalable supply Recombinant technology</p>
 <p>Success from the first experiment Confirmed specificity</p>	 <p>Ethical standards compliant Animal-free production</p>

Anti-ErbB4 / HER4+ErbB2 / HER2 antibody
[EPR22665-104] (ab219208)

Please note: All products are "FOR RESEARCH USE ONLY. NOT FOR USE IN DIAGNOSTIC PROCEDURES"

Our Abpromise to you: Quality guaranteed and expert technical support

- Replacement or refund for products not performing as stated on the datasheet
- Valid for 12 months from date of delivery

- Response to your inquiry within 24 hours
- We provide support in Chinese, English, French, German, Japanese and Spanish
- Extensive multi-media technical resources to help you
- We investigate all quality concerns to ensure our products perform to the highest standards

If the product does not perform as described on this datasheet, we will offer a refund or replacement. For full details of the Abpromise, please visit <https://www.abcam.com/abpromise> or contact our technical team.

Terms and conditions

- Guarantee only valid for products bought direct from Abcam or one of our authorized distributors