

### Anti-ERCC1 antibody ab196869

4 Images

#### Overview

<b>Product name</b>	Anti-ERCC1 antibody
<b>Description</b>	Rabbit polyclonal to ERCC1
<b>Host species</b>	Rabbit
<b>Tested applications</b>	<b>Suitable for:</b> WB, ICC/IF, IHC-P
<b>Species reactivity</b>	<b>Reacts with:</b> Mouse, Human
<b>Immunogen</b>	Recombinant full length protein within Human ERCC1. The exact sequence is proprietary. Database link: <a href="#">P07992</a>
<b>Positive control</b>	Raji, MCF7, PC3, HepG2, HeLa, Mouse liver and Mouse brain cell line extracts; Human kidney and Human kidney cancer tissues; U2OS cells.
<b>General notes</b>	<p>The Life Science industry has been in the grips of a reproducibility crisis for a number of years. Abcam is leading the way in addressing this with our range of recombinant monoclonal antibodies and knockout edited cell lines for gold-standard validation. Please check that this product meets your needs before purchasing.</p> <p>If you have any questions, special requirements or concerns, please send us an inquiry and/or contact our Support team ahead of purchase. Recommended alternatives for this product can be found below, along with publications, customer reviews and Q&amp;As</p>

#### Properties

<b>Form</b>	Liquid
<b>Storage instructions</b>	Shipped at 4°C. Store at +4°C short term (1-2 weeks). Upon delivery aliquot. Store at -20°C long term. Avoid freeze / thaw cycle.
<b>Storage buffer</b>	<p>pH: 7.40</p> <p>Preservative: 0.02% Sodium azide</p> <p>Constituents: 49% PBS, 50% Glycerol (glycerin, glycerine), 0.87% Sodium chloride</p> <p>(without Mg<sup>2+</sup> and Ca<sup>2+</sup>)</p>
<b>Purity</b>	Immunogen affinity purified
<b>Clonality</b>	Polyclonal
<b>Isotype</b>	IgG

## Applications

### The Abpromise guarantee

Our **Abpromise guarantee** covers the use of ab196869 in the following tested applications.

The application notes include recommended starting dilutions; optimal dilutions/concentrations should be determined by the end user.

Application	Abreviews	Notes
WB		1/500 - 1/2000. Predicted molecular weight: 33 kDa.
ICC/IF		1/50 - 1/200.
IHC-P		1/50 - 1/200.

## Target

### Function

Structure-specific DNA repair endonuclease responsible for the 5'-incision during DNA repair.

### Involvement in disease

Defects in ERCC1 are the cause of cerebro-oculo-facio-skeletal syndrome type 4 (COFS4) [MIM:610758]. COFS is a degenerative autosomal recessive disorder of prenatal onset affecting the brain, eye and spinal cord. After birth, it leads to brain atrophy, hypoplasia of the corpus callosum, hypotonia, cataracts, microcornea, optic atrophy, progressive joint contractures and growth failure. Facial dysmorphism is a constant feature. Abnormalities of the skull, eyes, limbs, heart and kidney also occur.

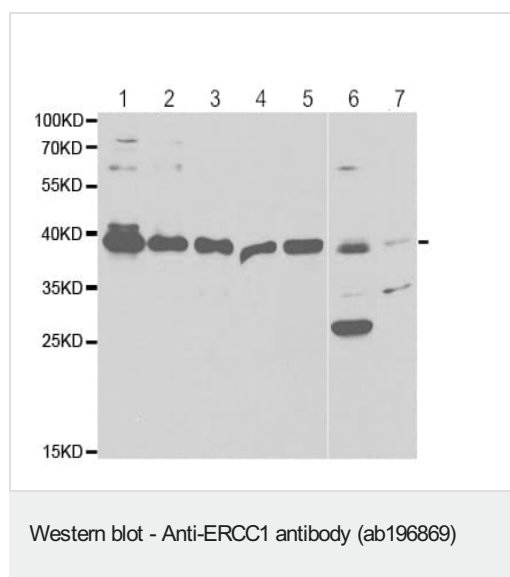
### Sequence similarities

Belongs to the ERCC1/RAD10/SWI10 family.

### Cellular localization

Nucleus.

## Images



**All lanes :** Anti-ERCC1 antibody (ab196869) at 1/500 dilution

**Lane 1 :** Raji cell line extract

**Lane 2 :** MCF7 cell line extract

**Lane 3 :** PC3 cell line extract

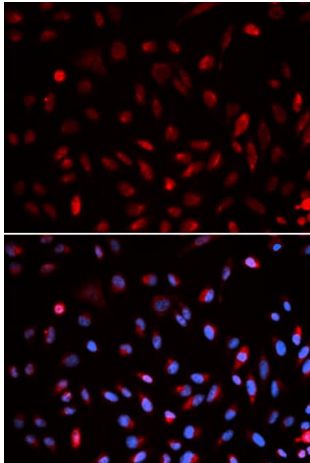
**Lane 4 :** HepG2 cell line extract

**Lane 5 :** HeLa cell line extract

**Lane 6 :** Mouse liver tissue extract

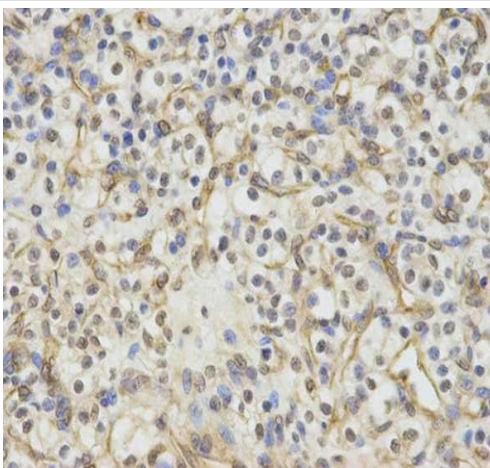
**Lane 7 :** Mouse brain tissue extract

**Predicted band size:** 33 kDa



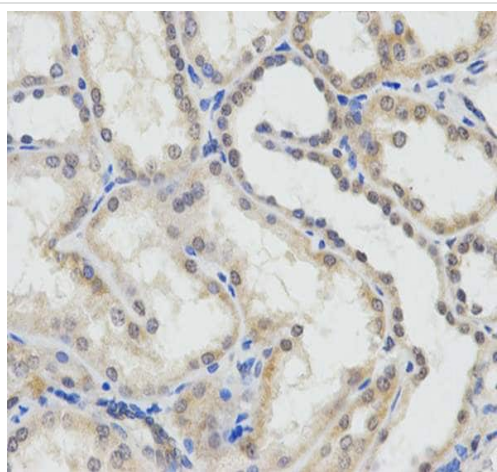
Immunofluorescent analysis of U2OS cells labeling ERCC1 with ab196869 at 1/50. Image at the bottom costained with DAPI.

Immunocytochemistry/ Immunofluorescence - Anti-ERCC1 antibody (ab196869)



Immunohistochemical analysis of paraffin-embedded Human kidney cancer tissue labeling ERCC1 with ab196869 at 1/50.

Immunohistochemistry (Formalin/PFA-fixed paraffin-embedded sections) - Anti-ERCC1 antibody (ab196869)



Immunohistochemical analysis of paraffin-embedded Human kidney tissue labeling ERCC1 with ab196869 at 1/50.

Immunohistochemistry (Formalin/PFA-fixed paraffin-embedded sections) - Anti-ERCC1 antibody (ab196869)

**Please note:** All products are "FOR RESEARCH USE ONLY. NOT FOR USE IN DIAGNOSTIC PROCEDURES"

### Our Abpromise to you: Quality guaranteed and expert technical support

---

- Replacement or refund for products not performing as stated on the datasheet
- Valid for 12 months from date of delivery
- Response to your inquiry within 24 hours
- We provide support in Chinese, English, French, German, Japanese and Spanish
- Extensive multi-media technical resources to help you
- We investigate all quality concerns to ensure our products perform to the highest standards

If the product does not perform as described on this datasheet, we will offer a refund or replacement. For full details of the Abpromise, please visit <https://www.abcam.com/abpromise> or contact our technical team.

### Terms and conditions

---

- Guarantee only valid for products bought direct from Abcam or one of our authorized distributors