


Product datasheet

Anti-ERCC1 antibody [EPR7062] ab129093

Recombinant RabMAb

4 Images

Overview

Product name	Anti-ERCC1 antibody [EPR7062]
Description	Rabbit monoclonal [EPR7062] to ERCC1
Host species	Rabbit
Tested applications	Suitable for: WB, IHC-P, ICC/IF Unsuitable for: Flow Cyt or IP
Species reactivity	Reacts with: Human Predicted to work with: Mouse, Rat 
Immunogen	Recombinant fragment within Human ERCC1 aa 150-300. The exact sequence is proprietary. Database link: P07992
Positive control	HeLa, SKBR-3, and 293T cell lysates, Human lung carcinoma tissue, HeLa cells
General notes	This product is a recombinant monoclonal antibody, which offers several advantages including: <ul style="list-style-type: none"> - High batch-to-batch consistency and reproducibility - Improved sensitivity and specificity - Long-term security of supply - Animal-free production For more information see here . Our RabMAb [®] technology is a patented hybridoma-based technology for making rabbit monoclonal antibodies. For details on our patents, please refer to RabMAb[®] patents .

Properties

Form	Liquid
Storage instructions	Shipped at 4°C. Store at +4°C short term (1-2 weeks). Upon delivery aliquot. Store at -20°C. Stable for 12 months at -20°C.
Storage buffer	pH: 7.20 Preservative: 0.01% Sodium azide Constituents: 59% PBS, 40% Glycerol (glycerin, glycerine), 0.5% BSA
Purity	Protein A purified
Clonality	Monoclonal

Clone number	EPR7062
Isotype	IgG

Applications

The Abpromise guarantee Our **Abpromise guarantee** covers the use of ab129093 in the following tested applications. The application notes include recommended starting dilutions; optimal dilutions/concentrations should be determined by the end user.

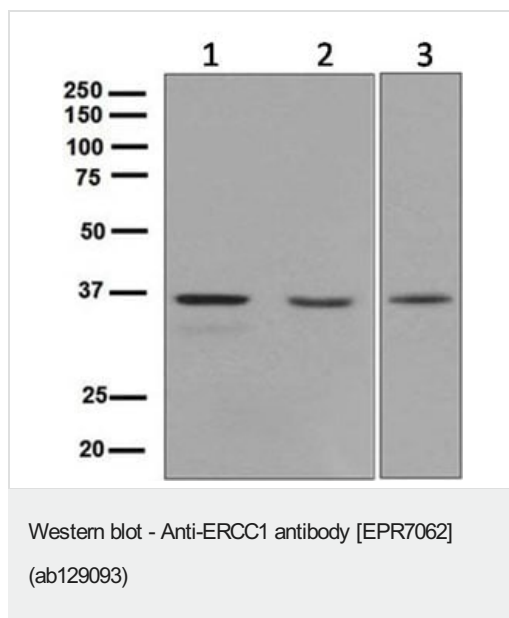
Application	Abreviews	Notes
WB		1/1000 - 1/10000. Detects a band of approximately 36 kDa (predicted molecular weight: 33 kDa).
IHC-P		1/25 - 1/50. Perform heat mediated antigen retrieval before commencing with IHC staining protocol.
ICC/IF		1/100 - 1/250.

Application notes Is unsuitable for Flow Cyt or IP.

Target

Function	Structure-specific DNA repair endonuclease responsible for the 5'-incision during DNA repair.
Involvement in disease	Defects in ERCC1 are the cause of cerebro-oculo-facio-skeletal syndrome type 4 (COFS4) [MIM:610758]. COFS is a degenerative autosomal recessive disorder of prenatal onset affecting the brain, eye and spinal cord. After birth, it leads to brain atrophy, hypoplasia of the corpus callosum, hypotonia, cataracts, microcornea, optic atrophy, progressive joint contractures and growth failure. Facial dysmorphism is a constant feature. Abnormalities of the skull, eyes, limbs, heart and kidney also occur.
Sequence similarities	Belongs to the ERCC1/RAD10/SWI10 family.
Cellular localization	Nucleus.

Images



All lanes : Anti-ERCC1 antibody [EPR7062] (ab129093) at 1/1000 dilution

Lane 1 : HeLa cell lysates

Lane 2 : SKBR-3 cell lysates

Lane 3 : 293T cell lysates

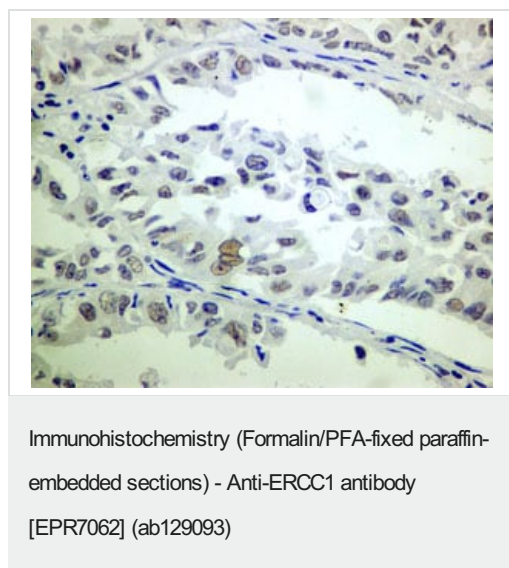
Lysates/proteins at 10 µg per lane.

Secondary

All lanes : HRP labelled goat anti-rabbit at 1/2000 dilution

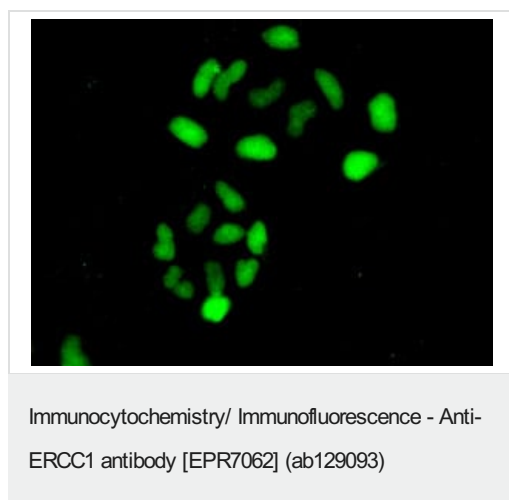
Predicted band size: 33 kDa

Observed band size: 36 kDa



Formalin-fixed, paraffin-embedded human lung carcinoma tissue stained for ERCC1 with ab129093 (1/25 dilution) in immunohistochemical analysis.

Perform heat mediated antigen retrieval before commencing with IHC staining protocol.



ab129093, at a 1/100 dilution, staining ERCC1 in HeLa cells by Immunofluorescence.

Why choose a recombinant antibody?



Research with confidence
Consistent and reproducible results



Long-term and scalable supply
Recombinant technology



Success from the first experiment
Confirmed specificity



Ethical standards compliant
Animal-free production

Anti-ERCC1 antibody [EPR7062] (ab129093)

Please note: All products are "FOR RESEARCH USE ONLY. NOT FOR USE IN DIAGNOSTIC PROCEDURES"

Our Abpromise to you: Quality guaranteed and expert technical support

- Replacement or refund for products not performing as stated on the datasheet
- Valid for 12 months from date of delivery
- Response to your inquiry within 24 hours
- We provide support in Chinese, English, French, German, Japanese and Spanish
- Extensive multi-media technical resources to help you
- We investigate all quality concerns to ensure our products perform to the highest standards

If the product does not perform as described on this datasheet, we will offer a refund or replacement. For full details of the Abpromise, please visit <https://www.abcam.com/abpromise> or contact our technical team.

Terms and conditions

- Guarantee only valid for products bought direct from Abcam or one of our authorized distributors