


Product datasheet

Anti-ERCC1 antibody [SP68] - BSA and Azide free ab236442

Recombinant RabMAb

[15 Images](#)

Overview

Product name	Anti-ERCC1 antibody [SP68] - BSA and Azide free
Description	Rabbit monoclonal [SP68] to ERCC1 - BSA and Azide free
Host species	Rabbit
Tested applications	Suitable for: IHC-P
Species reactivity	Reacts with: Mouse, Rat, Human Predicted to work with: Hamster, Cow, Pig 
Immunogen	Recombinant full length protein corresponding to Human ERCC1. Database link: P07992
Positive control	IHC-P: Human lung carcinoma, bladder transitional cell carcinoma, testis, breast ductal carcinoma, colon, colon carcinoma, hepatocellular carcinoma, lung carcinoma, prostate carcinoma, renal cell carcinoma, skin squamous cell carcinoma, Mouse colon, and Rat colon tissue.
General notes	<p>ab236442 is the carrier-free version of ab225721.</p> <p>Our carrier-free antibodies are typically supplied in a PBS-only formulation, purified and free of BSA, sodium azide and glycerol. The carrier-free buffer and high concentration allow for increased conjugation efficiency.</p> <p>This conjugation-ready format is designed for use with fluorochromes, metal isotopes, oligonucleotides, and enzymes, which makes them ideal for antibody labelling, functional and cell-based assays, flow-based assays (e.g. mass cytometry) and Multiplex Imaging applications.</p> <p>Use our conjugation kits for antibody conjugates that are ready-to-use in as little as 20 minutes with <1 minute hands-on-time and 100% antibody recovery: available for fluorescent dyes, HRP, biotin and gold.</p> <p>This product is compatible with the Maxpar[®] Antibody Labeling Kit from Fluidigm, without the need for antibody preparation. Maxpar[®] is a trademark of Fluidigm Canada Inc.</p> <p>This product is a recombinant monoclonal antibody, which offers several advantages including:</p> <ul style="list-style-type: none">- High batch-to-batch consistency and reproducibility- Improved sensitivity and specificity- Long-term security of supply- Animal-free production

For more information [see here](#).

This product is FOR RESEARCH USE ONLY. For commercial use, please contact partnerships@abcam.com.

Properties

Form	Liquid
Storage instructions	Shipped at 4°C. Store at +4°C. Do Not Freeze.
Storage buffer	pH: 7.20 Constituent: PBS
Carrier free	Yes
Purity	Protein A/G purified
Purification notes	Purified from TCS by protein A/G.
Clonality	Monoclonal
Clone number	SP68
Isotype	IgG

Applications

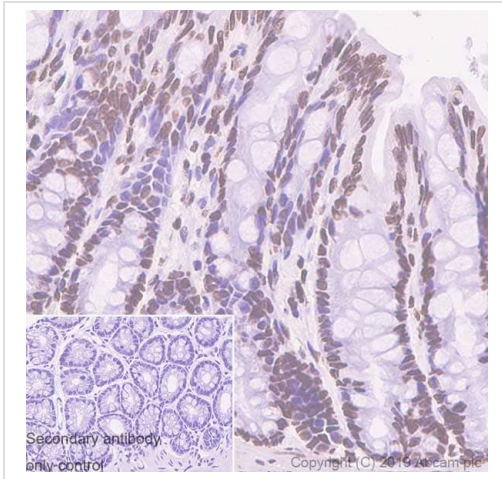
The Abpromise guarantee Our **Abpromise guarantee** covers the use of ab236442 in the following tested applications. The application notes include recommended starting dilutions; optimal dilutions/concentrations should be determined by the end user.

Application	Abreviews	Notes
IHC-P		Use at an assay dependent concentration. Perform heat mediated antigen retrieval with citrate buffer pH 6 before commencing with IHC staining protocol. Primary incubation for 30 minutes at room temperature.

Target

Function	Structure-specific DNA repair endonuclease responsible for the 5'-incision during DNA repair.
Involvement in disease	Defects in ERCC1 are the cause of cerebro-oculo-facio-skeletal syndrome type 4 (COFS4) [MIM:610758]. COFS is a degenerative autosomal recessive disorder of prenatal onset affecting the brain, eye and spinal cord. After birth, it leads to brain atrophy, hypoplasia of the corpus callosum, hypotonia, cataracts, microcornea, optic atrophy, progressive joint contractures and growth failure. Facial dysmorphism is a constant feature. Abnormalities of the skull, eyes, limbs, heart and kidney also occur.
Sequence similarities	Belongs to the ERCC1/RAD10/SWI10 family.
Cellular localization	Nucleus.

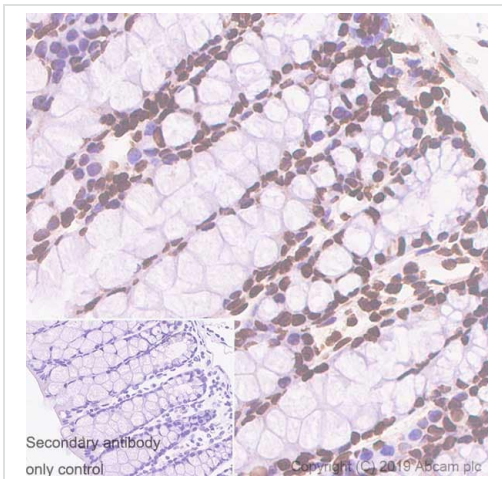
Images



Immunohistochemistry (Formalin/PFA-fixed paraffin-embedded sections) - Anti-ERCC1 antibody [SP68] - BSA and Azide free (ab236442)

Immunohistochemistry (Formalin/PFA-fixed paraffin-embedded sections) analysis of Rat colon tissue sections labeling ERCC1 with Purified **ab225721** at 1/400 dilution (0.132 µg/ml). Heat mediated antigen retrieval was performed Heat mediated antigen retrieval with sodium citrate buffer (pH 6.0, epitope retrieval solution 1) for 20mins. Rabbit specific IHC polymer detection kit HRP/DAB (**ab209101**) was used as the secondary antibody. Negative control: PBS instead of the primary antibody. Hematoxylin was used as a counterstain.

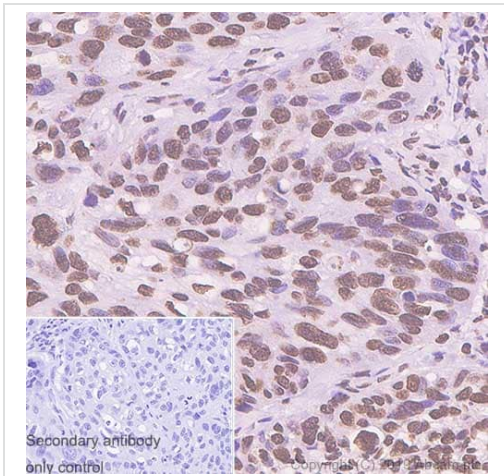
This data was developed using the same antibody clone in a different buffer formulation containing PBS, BSA, glycerol, and sodium azide (**ab225721**)



Immunohistochemistry (Formalin/PFA-fixed paraffin-embedded sections) - Anti-ERCC1 antibody [SP68] - BSA and Azide free (ab236442)

Immunohistochemistry (Formalin/PFA-fixed paraffin-embedded sections) analysis of Mouse colon tissue sections labeling ERCC1 with Purified **ab225721** at 1/400 dilution (0.132 µg/ml). Heat mediated antigen retrieval was performed Heat mediated antigen retrieval with sodium citrate buffer (pH 6.0, epitope retrieval solution 1) for 20mins. Rabbit specific IHC polymer detection kit HRP/DAB (**ab209101**) was used as the secondary antibody. Negative control: PBS instead of the primary antibody. Hematoxylin was used as a counterstain.

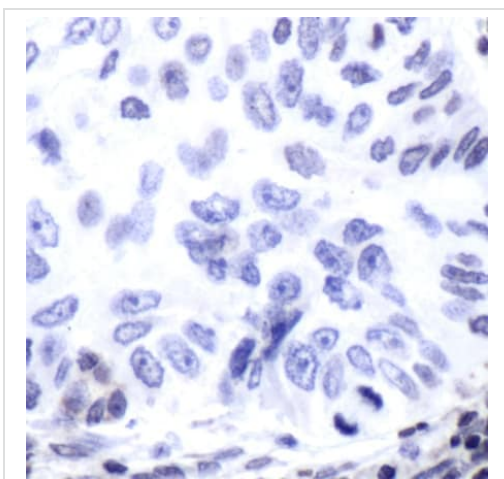
This data was developed using the same antibody clone in a different buffer formulation containing PBS, BSA, glycerol, and sodium azide (**ab225721**)



Immunohistochemistry (Formalin/PFA-fixed paraffin-embedded sections) - Anti-ERCC1 antibody [SP68] - BSA and Azide free (ab236442)

Immunohistochemistry (Formalin/PFA-fixed paraffin-embedded sections) analysis of Human lung carcinoma tissue sections labeling ERCC1 with Purified **ab225721** at 1/100 dilution (0.53 µg/ml). Heat mediated antigen retrieval was performed Heat mediated antigen retrieval with sodium citrate buffer (pH 6.0, epitope retrieval solution 1) for 20mins. Rabbit specific IHC polymer detection kit HRP/DAB (**ab209101**) was used as the secondary antibody. Negative control: PBS instead of the primary antibody. Hematoxylin was used as a counterstain.

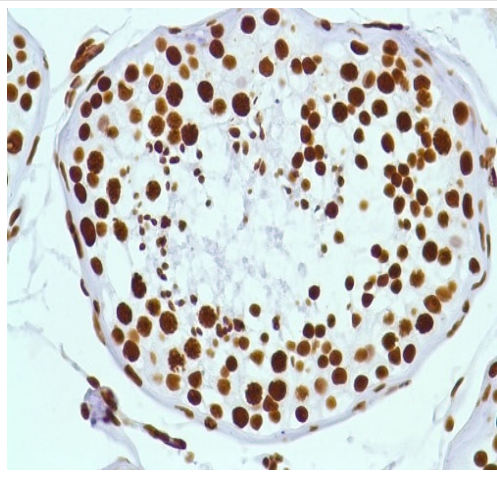
This data was developed using the same antibody clone in a different buffer formulation containing PBS, BSA, glycerol, and sodium azide (**ab225721**)



Immunohistochemistry (Formalin/PFA-fixed paraffin-embedded sections) - Anti-ERCC1 antibody [SP68] - BSA and Azide free (ab236442)

Formalin-fixed, paraffin-embedded human lung carcinoma tissue stained for ERCC1 using **ab225721** at 1/100 dilution in immunohistochemical analysis.

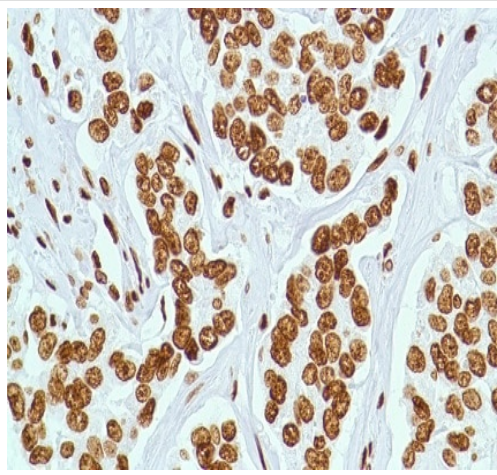
This data was developed using the same antibody clone in a different buffer formulation containing PBS, BSA, glycerol, and sodium azide (**ab225721**).



Immunohistochemistry (Formalin/PFA-fixed paraffin-embedded sections) - Anti-ERCC1 antibody [SP68] - BSA and Azide free (ab236442)

Formalin-fixed, paraffin-embedded human testis tissue stained for ERCC1 using [ab225721](#) at 1/100 dilution in immunohistochemical analysis.

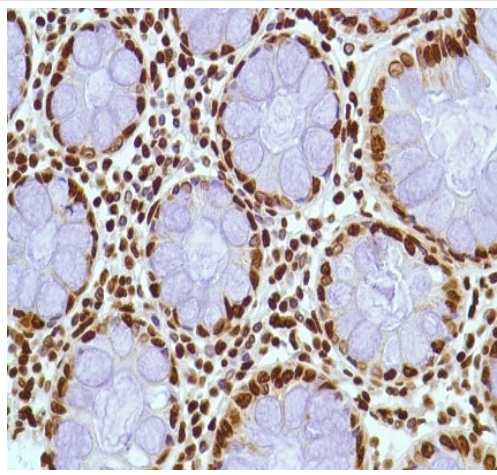
This data was developed using the same antibody clone in a different buffer formulation containing PBS, BSA, glycerol, and sodium azide ([ab225721](#)).



Immunohistochemistry (Formalin/PFA-fixed paraffin-embedded sections) - Anti-ERCC1 antibody [SP68] - BSA and Azide free (ab236442)

Formalin-fixed, paraffin-embedded human breast ductal carcinoma tissue stained for ERCC1 using [ab225721](#) at 1/100 dilution in immunohistochemical analysis.

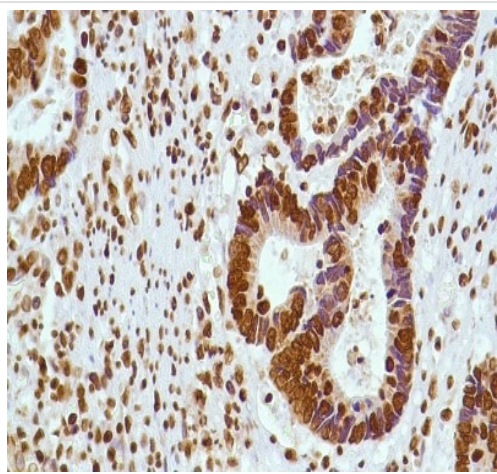
This data was developed using the same antibody clone in a different buffer formulation containing PBS, BSA, glycerol, and sodium azide ([ab225721](#)).



Immunohistochemistry (Formalin/PFA-fixed paraffin-embedded sections) - Anti-ERCC1 antibody [SP68] - BSA and Azide free (ab236442)

Formalin-fixed, paraffin-embedded human colon tissue stained for ERCC1 using [ab225721](#) at 1/100 dilution in immunohistochemical analysis.

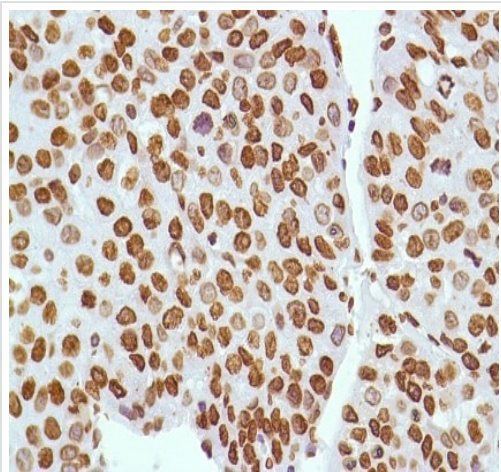
This data was developed using the same antibody clone in a different buffer formulation containing PBS, BSA, glycerol, and sodium azide ([ab225721](#)).



Immunohistochemistry (Formalin/PFA-fixed paraffin-embedded sections) - Anti-ERCC1 antibody [SP68] - BSA and Azide free (ab236442)

Formalin-fixed, paraffin-embedded human colon adenocarcinoma tissue stained for ERCC1 using [ab225721](#) at 1/100 dilution in immunohistochemical analysis.

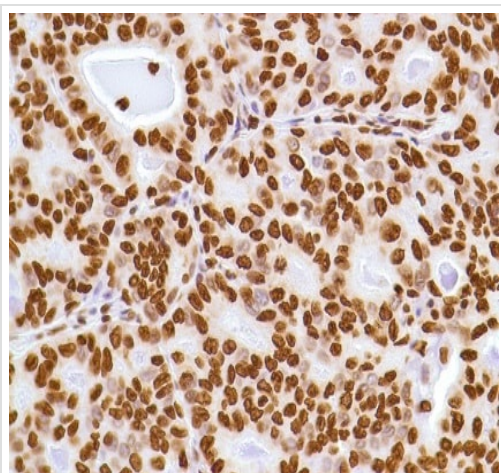
This data was developed using the same antibody clone in a different buffer formulation containing PBS, BSA, glycerol, and sodium azide ([ab225721](#)).



Immunohistochemistry (Formalin/PFA-fixed paraffin-embedded sections) - Anti-ERCC1 antibody [SP68] - BSA and Azide free (ab236442)

Formalin-fixed, paraffin-embedded human hepatocellular carcinoma tissue stained for ERCC1 using [ab225721](#) at 1/100 dilution in immunohistochemical analysis.

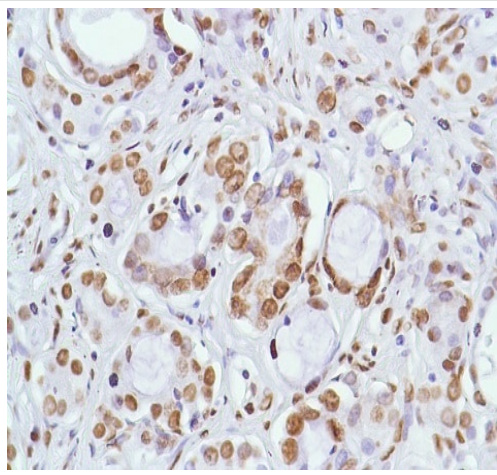
This data was developed using the same antibody clone in a different buffer formulation containing PBS, BSA, glycerol, and sodium azide ([ab225721](#)).



Immunohistochemistry (Formalin/PFA-fixed paraffin-embedded sections) - Anti-ERCC1 antibody [SP68] - BSA and Azide free (ab236442)

Formalin-fixed, paraffin-embedded human lung adenocarcinoma tissue stained for ERCC1 using [ab225721](#) at 1/100 dilution in immunohistochemical analysis.

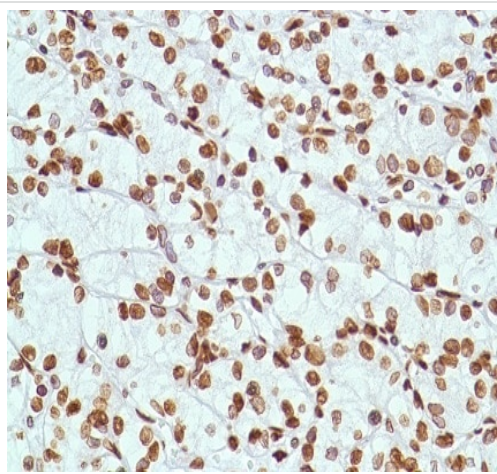
This data was developed using the same antibody clone in a different buffer formulation containing PBS, BSA, glycerol, and sodium azide ([ab225721](#)).



Immunohistochemistry (Formalin/PFA-fixed paraffin-embedded sections) - Anti-ERCC1 antibody [SP68] - BSA and Azide free (ab236442)

Formalin-fixed, paraffin-embedded human prostate adenocarcinoma tissue stained for ERCC1 using **ab225721** at 1/100 dilution in immunohistochemical analysis.

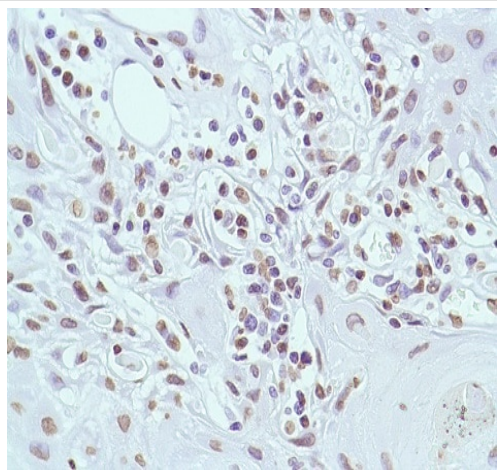
This data was developed using the same antibody clone in a different buffer formulation containing PBS, BSA, glycerol, and sodium azide (**ab225721**).



Immunohistochemistry (Formalin/PFA-fixed paraffin-embedded sections) - Anti-ERCC1 antibody [SP68] - BSA and Azide free (ab236442)

Formalin-fixed, paraffin-embedded human renal cell carcinoma tissue stained for ERCC1 using **ab225721** at 1/100 dilution in immunohistochemical analysis.

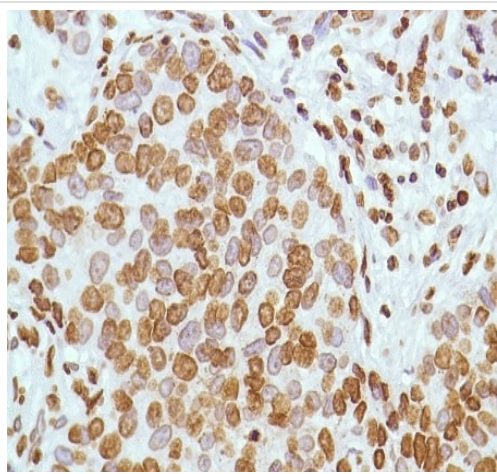
This data was developed using the same antibody clone in a different buffer formulation containing PBS, BSA, glycerol, and sodium azide (**ab225721**).



Immunohistochemistry (Formalin/PFA-fixed paraffin-embedded sections) - Anti-ERCC1 antibody [SP68] - BSA and Azide free (ab236442)

Formalin-fixed, paraffin-embedded human skin squamous cell carcinoma tissue stained for ERCC1 using [ab225721](#) at 1/100 dilution in immunohistochemical analysis.

This data was developed using the same antibody clone in a different buffer formulation containing PBS, BSA, glycerol, and sodium azide ([ab225721](#)).



Immunohistochemistry (Formalin/PFA-fixed paraffin-embedded sections) - Anti-ERCC1 antibody [SP68] - BSA and Azide free (ab236442)

Formalin-fixed, paraffin-embedded human bladder transitional cell carcinoma tissue stained for ERCC1 using [ab225721](#) at 1/100 dilution in immunohistochemical analysis.

This data was developed using the same antibody clone in a different buffer formulation containing PBS, BSA and sodium azide ([ab225721](#)).

Why choose a recombinant antibody?



Research with confidence
Consistent and reproducible results



Long-term and scalable supply
Recombinant technology



Success from the first experiment
Confirmed specificity



Ethical standards compliant
Animal-free production

Anti-ERCC1 antibody [SP68] - BSA and Azide free
(ab236442)

Please note: All products are "FOR RESEARCH USE ONLY. NOT FOR USE IN DIAGNOSTIC PROCEDURES"

Our Abpromise to you: Quality guaranteed and expert technical support

- Replacement or refund for products not performing as stated on the datasheet
- Valid for 12 months from date of delivery
- Response to your inquiry within 24 hours
- We provide support in Chinese, English, French, German, Japanese and Spanish
- Extensive multi-media technical resources to help you
- We investigate all quality concerns to ensure our products perform to the highest standards

If the product does not perform as described on this datasheet, we will offer a refund or replacement. For full details of the Abpromise, please visit <https://www.abcam.com/abpromise> or contact our technical team.

Terms and conditions

- Guarantee only valid for products bought direct from Abcam or one of our authorized distributors