

Product datasheet

Anti-ERGIC1 antibody ab121582

★ ★ ★ ★ ★ [1 Abreviews](#) [2 References](#) [4 Images](#)

Overview

| | |
|----------------------------|---|
| Product name | Anti-ERGIC1 antibody |
| Description | Rabbit polyclonal to ERGIC1 |
| Host species | Rabbit |
| Tested applications | Suitable for: ICC/IF, IHC-P, WB |
| Species reactivity | Reacts with: Human |
| Immunogen | antigen sequence: PGNFHVSTHS ATAQPQNPDM THVIHKLSFG DTLQVQNIHG AFNALGGADR LTSNPLASHD YIL, corresponding to internal sequence amino acids 127-189 of Human ERGIC1 Run BLAST with ExPASy Run BLAST with NCBI |
| Positive control | WB: Transfected HEK293T cells overexpressing ERGIC1 with a C-terminal myc-DDK tag. ICC/IF: Human cell line U-2 OS IHC: Human colon and human duodenum tissue |
| General notes | <p>The Life Science industry has been in the grips of a reproducibility crisis for a number of years. Abcam is leading the way in addressing this with our range of recombinant monoclonal antibodies and knockout edited cell lines for gold-standard validation. Please check that this product meets your needs before purchasing.</p> <p>If you have any questions, special requirements or concerns, please send us an inquiry and/or contact our Support team ahead of purchase. Recommended alternatives for this product can be found below, along with publications, customer reviews and Q&As</p> |

Properties

| | |
|-----------------------------|---|
| Form | Liquid |
| Storage instructions | Shipped at 4°C. Upon delivery aliquot and store at -20°C. Avoid repeated freeze / thaw cycles. |
| Storage buffer | pH: 7.20 Preservative: 0.02% Sodium azide Constituents: 59% PBS, 40% Glycerol (glycerin, glycerine) |
| Purity | Immunogen affinity purified |
| Clonality | Polyclonal |
| Isotype | IgG |

Applications

The Abpromise guarantee

Our **Abpromise guarantee** covers the use of ab121582 in the following tested applications.

The application notes include recommended starting dilutions; optimal dilutions/concentrations should be determined by the end user.

| Application | Abreviews | Notes |
|-------------|---------------|--|
| ICC/IF | | Use a concentration of 0.25 - 2 µg/ml. |
| IHC-P | | 1/50 - 1/200. Perform heat mediated antigen retrieval with citrate buffer pH 6 before commencing with IHC staining protocol. Use buffer at pH 6 for antigen retrieval. |
| WB | ★ ★ ★ ★ ★ (1) | Use a concentration of 0.04 - 0.4 µg/ml. |

Target

Function

Possible role in transport between endoplasmic reticulum and Golgi.

Sequence similarities

Belongs to the ERGIC family.

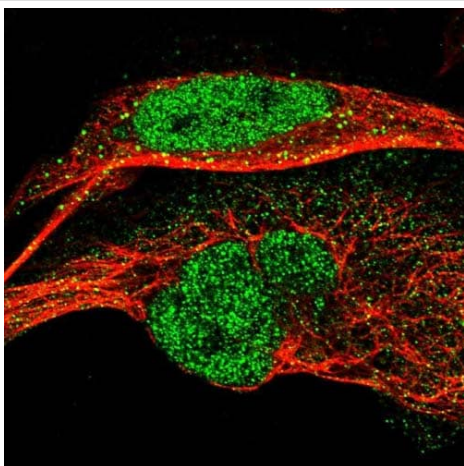
Post-translational modifications

N-glycosylated.

Cellular localization

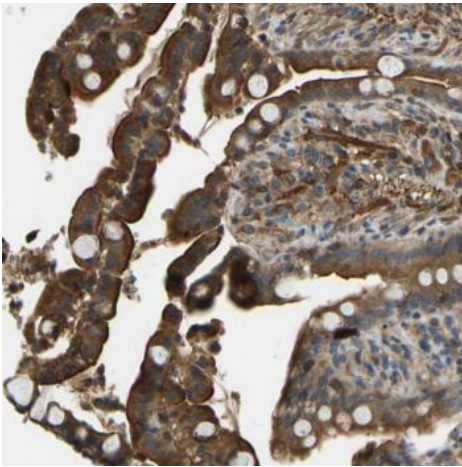
Endoplasmic reticulum membrane. Endoplasmic reticulum-Golgi intermediate compartment membrane. Golgi apparatus membrane. Cycles between the endoplasmic reticulum and the Golgi.

Images



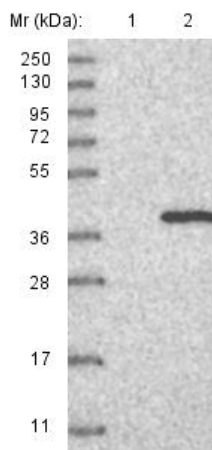
Immunofluorescent staining of Human cell line U-2 OS shows positivity in nucleus but not nucleoli and vesicles. Recommended concentration of ab121582 1-4 µg/ml. Cells treated with PFA/Triton X-100.

Immunocytochemistry/ Immunofluorescence - Anti-ERGIC1 antibody (ab121582)



ab121582 at a 1/50 dilution, staining ERGIC1 in glandular cells of paraffin-embedded Human colon tissue by immunohistochemistry.

Immunohistochemistry (Formalin/PFA-fixed paraffin-embedded sections) - Anti-ERGIC1 antibody (ab121582)



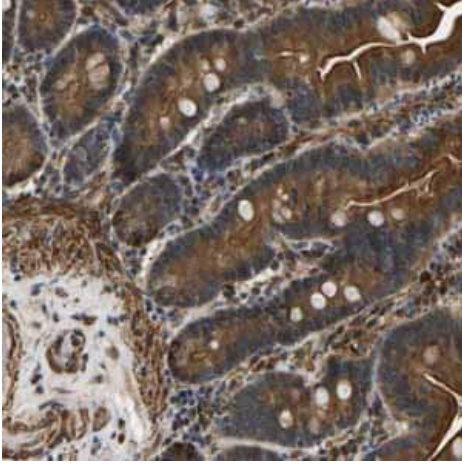
All lanes : Anti-ERGIC1 antibody (ab121582) at 1/250 dilution

Lane 1 : Vector only transfected HEK293T cell lysate

Lane 2 : Lysate from transfected HEK293T cells overexpressing ERGIC1 with a C-terminal myc-DDK tag (~3.1 kDa)

Developed using the ECL technique.

Western blot - Anti-ERGIC1 antibody (ab121582)



Immunohistochemical staining of Human duodenum shows strong cytoplasmic positivity using ab121582

Immunohistochemistry (Formalin/PFA-fixed paraffin-embedded sections) - Anti-ERGIC1 antibody (ab121582)

Please note: All products are "FOR RESEARCH USE ONLY. NOT FOR USE IN DIAGNOSTIC PROCEDURES"

Our Abpromise to you: Quality guaranteed and expert technical support

- Replacement or refund for products not performing as stated on the datasheet
- Valid for 12 months from date of delivery
- Response to your inquiry within 24 hours
- We provide support in Chinese, English, French, German, Japanese and Spanish
- Extensive multi-media technical resources to help you
- We investigate all quality concerns to ensure our products perform to the highest standards

If the product does not perform as described on this datasheet, we will offer a refund or replacement. For full details of the Abpromise, please visit <https://www.abcam.com/abpromise> or contact our technical team.

Terms and conditions

- Guarantee only valid for products bought direct from Abcam or one of our authorized distributors