


Product datasheet

Anti-ERK1 (phospho T202 + Y204) + ERK2 (phospho T185 + Y187) antibody ab128159

[2 Images](#)

Overview

Product name	Anti-ERK1 (phospho T202 + Y204) + ERK2 (phospho T185 + Y187) antibody
Description	Rabbit polyclonal to ERK1 (phospho T202 + Y204) + ERK2 (phospho T185 + Y187)
Host species	Rabbit
Tested applications	Suitable for: WB, IP
Species reactivity	<p>Reacts with: Human</p> <p>Predicted to work with: Mouse, Rat, Rabbit, Goat, Chicken, Guinea pig, Cow, Turkey, Pig, Xenopus laevis, Chimpanzee, Drosophila melanogaster, Zebrafish, Rhesus monkey, Gorilla, Orangutan, Xenopus tropicalis </p>
Immunogen	<p>This product was produced with the following immunogens:</p> <p>Synthetic peptide corresponding to Human ERK1 (phospho T202 + Y204). Database link: P27361</p> <p>Synthetic peptide corresponding to Human ERK2 (phospho T185 + Y187). Database link: P28482</p>
Positive control	HeLa whole cell lysate, mock treated or treated with TPA
General notes	<p>The Life Science industry has been in the grips of a reproducibility crisis for a number of years. Abcam is leading the way in addressing this with our range of recombinant monoclonal antibodies and knockout edited cell lines for gold-standard validation. Please check that this product meets your needs before purchasing.</p> <p>If you have any questions, special requirements or concerns, please send us an inquiry and/or contact our Support team ahead of purchase. Recommended alternatives for this product can be found below, along with publications, customer reviews and Q&As</p>

Properties

Form	Liquid
Storage instructions	Shipped at 4°C. Store at +4°C short term (1-2 weeks). Store at -20°C or -80°C. Avoid freeze / thaw cycle.
Storage buffer	<p>pH: 7</p> <p>Preservative: 0.09% Sodium azide</p>

Constituent: 99% Tris citrate/phosphate

pH 7 to 8

Purity

Immunogen affinity purified

Clonality

Polyclonal

Isotype

IgG

Applications

The Abpromise guarantee

Our **Abpromise guarantee** covers the use of ab128159 in the following tested applications.

The application notes include recommended starting dilutions; optimal dilutions/concentrations should be determined by the end user.

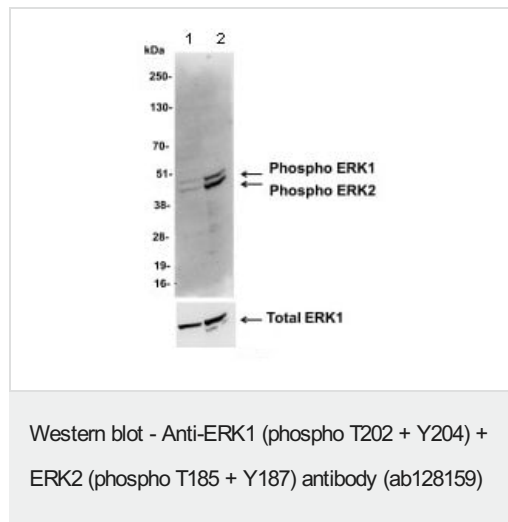
Application	Abreviews	Notes
WB		1/1000 - 1/5000. Predicted molecular weight: 41, 43 kDa.
IP		Use at an assay dependent concentration.

Target

Cellular localization

ERK2: Nucleus.

Images



All lanes : Anti-ERK1 (phospho T202 + Y204) + ERK2 (phospho T185 + Y187) antibody (ab128159) at 0.1 µg/ml

Lane 1 : HeLa whole cell lysate, mock treated

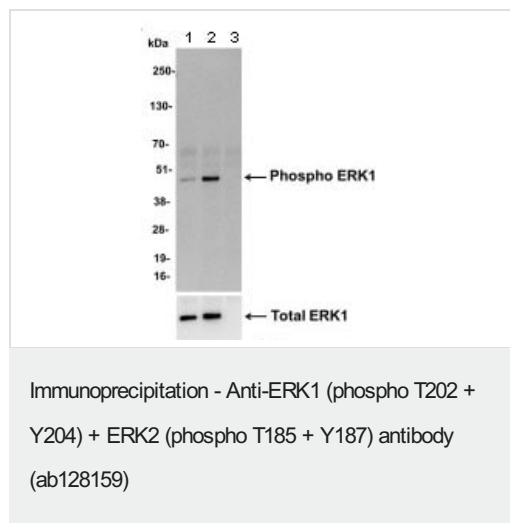
Lane 2 : HeLa whole cell lysate, TPA treated

Lysates/proteins at 50 µg per lane.

Developed using the ECL technique.

Predicted band size: 41, 43 kDa

Exposure time: 30 seconds



ab128159 at 1 µg/ml staining ERK1 + ERK2 (phospho T202 + Y204 + T185 + Y187) in HeLa whole cell lysate immunoprecipitated using a Rabbit anti-ERK1 antibody (1 mg/IP; 20% of IP loaded/lane).

Lane 1: mock treated.

Lanes 2 and 3: TPA treated.

Lane 3: normal goat IgG.

Predicted band size: 41 kDa.

Exposure time: 30 seconds.

Please note: All products are "FOR RESEARCH USE ONLY. NOT FOR USE IN DIAGNOSTIC PROCEDURES"

Our Abpromise to you: Quality guaranteed and expert technical support

- Replacement or refund for products not performing as stated on the datasheet
- Valid for 12 months from date of delivery
- Response to your inquiry within 24 hours
- We provide support in Chinese, English, French, German, Japanese and Spanish
- Extensive multi-media technical resources to help you
- We investigate all quality concerns to ensure our products perform to the highest standards

If the product does not perform as described on this datasheet, we will offer a refund or replacement. For full details of the Abpromise, please visit <https://www.abcam.com/abpromise> or contact our technical team.

Terms and conditions

- Guarantee only valid for products bought direct from Abcam or one of our authorized distributors