




Product datasheet

Anti-Erk1 (pT202/pY204) + Erk2 (pT185/pY187) antibody [MAPK-YT] ab50011

★★★★☆ [14 Abreviews](#) [120 References](#) [3 Images](#)

Overview

Product name	Anti-Erk1 (pT202/pY204) + Erk2 (pT185/pY187) antibody [MAPK-YT]
Description	Mouse monoclonal [MAPK-YT] to Erk1 (pT202/pY204) + Erk2 (pT185/pY187)
Host species	Mouse
Tested applications	Suitable for: ICC/IF, WB
Species reactivity	Reacts with: Rat, Saccharomyces cerevisiae, Drosophila melanogaster Predicted to work with: Xenopus laevis, Zebrafish 
Immunogen	Synthetic peptide corresponding to Erk1 (pT202/pY204) + Erk2 (pT185/pY187) conjugated to Keyhole Limpet Haemocyanin (KLH). Synthetic peptide corresponds to the phosphorylated form of human ERK1 and ERK2 activation loop. Sequence: HTGFLpTEpYVAT <div>  Run BLAST with  Run BLAST with </div>
Epitope	The epitope recognized by ab50011 is located in the region of phosphorylated threonine and tyrosine residues within the regulatory site of active MAP kinase (Thr185 and Tyr187 in ERK-2).
Positive control	Rat brain extract, Drosophila wing imaginal disc.
General notes	<p>This product was changed from ascites to tissue culture supernatant on 25th October 2016. The following lot is from ascites and is still in stock as of 25th October 2016- GR185138. Lot numbers higher than GR185138 will be from tissue culture supernatant. Please note that the dilutions may need to be adjusted accordingly.</p> <p>The Life Science industry has been in the grips of a reproducibility crisis for a number of years. Abcam is leading the way in addressing this with our range of recombinant monoclonal antibodies and knockout edited cell lines for gold-standard validation. Please check that this product meets your needs before purchasing.</p> <p>If you have any questions, special requirements or concerns, please send us an inquiry and/or contact our Support team ahead of purchase. Recommended alternatives for this product can be found below, along with publications, customer reviews and Q&As</p>

Properties

Form Liquid

Storage instructions	Shipped at 4°C. Store at +4°C short term (1-2 weeks). Upon delivery aliquot. Store at -20°C or -80°C. Avoid freeze / thaw cycle.
Storage buffer	pH: 7.40 Preservative: 0.097% Sodium azide Constituent: PBS
Purity	Proprietary Purification
Purification notes	Purified from tissue culture supernatant.
Clonality	Monoclonal
Clone number	MAPK-YT
Isotype	IgG1

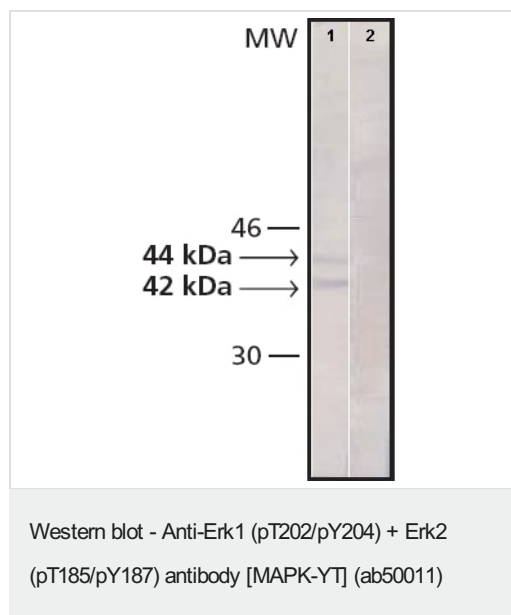
Applications

The Abpromise guarantee Our **Abpromise guarantee** covers the use of ab50011 in the following tested applications.

The application notes include recommended starting dilutions; optimal dilutions/concentrations should be determined by the end user.

Application	Abreviews	Notes
ICC/IF	★★★★★ (2)	1/200.
WB	★★★★★ (8)	1/10000. Predicted molecular weight: 44 kDa.

Images



Lane 1 : Anti-Erk1 (pT202/pY204) + Erk2 (pT185/pY187) antibody [MAPK-YT] (ab50011) at 1/10000 dilution

Lane 2 : no primary antibody

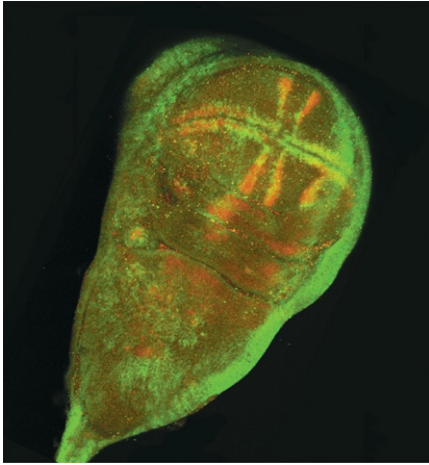
All lanes : Extract of Rat1 cells activated with 100μM Vanadate+200μM H₂O₂

Secondary

All lanes : Goat Anti-Mouse IgG, AlkPhos Conjugate

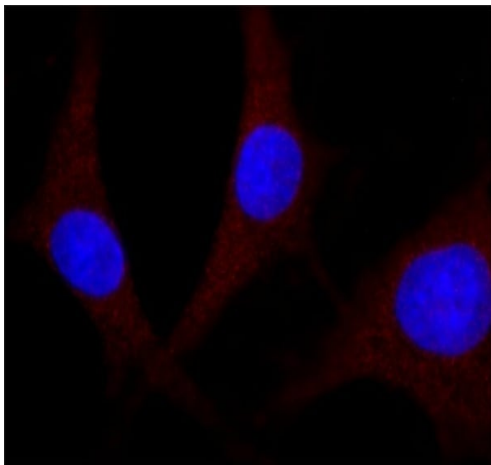
Predicted band size: 44 kDa

Observed band size: 42,44 kDa



In situ immunostaining of the activated form of MAP kinase with ab50011 (green) in Drosophila wing imaginal disc (500 micrometers long).

Immunocytochemistry/ Immunofluorescence - Anti-Erk1 (pT202/pY204) + Erk2 (pT185/pY187) antibody [MAPK-YT] (ab50011)



ICC/IF of NRK cells labeling the activated form of MAP kinase with ab50011 (1/1000 dilution). The antibody was developed using Goat Anti-Mouse IgG, Cy3™ conjugate. Cells were counterstained with DAPI (blue).

Immunocytochemistry/ Immunofluorescence - Anti-Erk1 (pT202/pY204) + Erk2 (pT185/pY187) antibody [MAPK-YT] (ab50011)

Please note: All products are "FOR RESEARCH USE ONLY. NOT FOR USE IN DIAGNOSTIC PROCEDURES"

Our Abpromise to you: Quality guaranteed and expert technical support

- Replacement or refund for products not performing as stated on the datasheet
- Valid for 12 months from date of delivery
- Response to your inquiry within 24 hours

- We provide support in Chinese, English, French, German, Japanese and Spanish
- Extensive multi-media technical resources to help you
- We investigate all quality concerns to ensure our products perform to the highest standards

If the product does not perform as described on this datasheet, we will offer a refund or replacement. For full details of the Abpromise, please visit <https://www.abcam.com/abpromise> or contact our technical team.

Terms and conditions

- Guarantee only valid for products bought direct from Abcam or one of our authorized distributors