


Product datasheet

Anti-ERK8 (phospho T175 + Y177) antibody ab73209

[1 References](#) [1 Image](#)

Overview

Product name	Anti-ERK8 (phospho T175 + Y177) antibody
Description	Rabbit polyclonal to ERK8 (phospho T175 + Y177)
Host species	Rabbit
Tested applications	Suitable for: WB
Species reactivity	Reacts with: Human Predicted to work with: Mouse 
Immunogen	Synthetic peptide corresponding to Human ERK8 (phospho T175 + Y177). Sequence: AVTPEYPVA Run BLAST with Run BLAST with
Positive control	Jurkat cell extract.
General notes	<p>The Life Science industry has been in the grips of a reproducibility crisis for a number of years. Abcam is leading the way in addressing this with our range of recombinant monoclonal antibodies and knockout edited cell lines for gold-standard validation. Please check that this product meets your needs before purchasing.</p> <p>If you have any questions, special requirements or concerns, please send us an inquiry and/or contact our Support team ahead of purchase. Recommended alternatives for this product can be found below, along with publications, customer reviews and Q&As</p>

Properties

Form	Liquid
Storage instructions	Shipped at 4°C. Store at -20°C. Stable for 12 months at -20°C.
Storage buffer	pH: 7.40 Preservative: 0.02% Sodium azide Constituents: 50% Glycerol (glycerin, glycerine), 0.87% Sodium chloride, PBS Without Mg ²⁺ and Ca ²⁺
Purity	Immunogen affinity purified
Purification notes	ab73209 was affinity-purified from rabbit antiserum by affinity chromatography using epitope-specific phosphopeptide. The antibody against non-phosphopeptide was removed by

chromatography using non-phosphopeptide corresponding to the phosphorylation site.

Clonality Polyclonal
Isotype IgG

Applications

The Abpromise guarantee Our **Abpromise guarantee** covers the use of ab73209 in the following tested applications. The application notes include recommended starting dilutions; optimal dilutions/concentrations should be determined by the end user.

Application	Abreviews	Notes
WB		1/500 - 1/1000. Detects a band of approximately 50 kDa (predicted molecular weight: 60 kDa).

Target

Function In vitro, phosphorylates MBP.

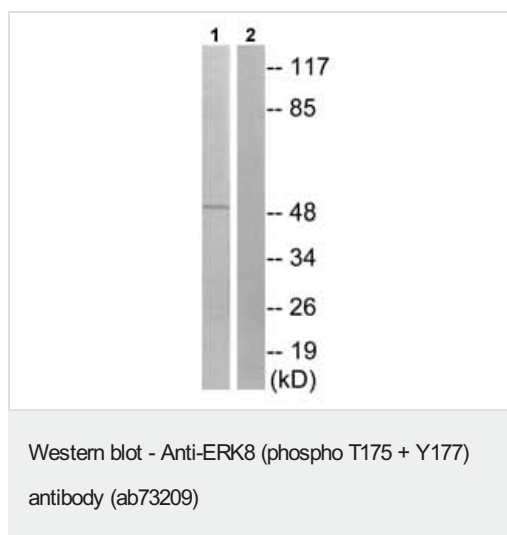
Tissue specificity Widely expressed with a maximal expression in lung and kidney.

Sequence similarities Belongs to the protein kinase superfamily. CMGC Ser/Thr protein kinase family. MAP kinase subfamily.
Contains 1 protein kinase domain.

Domain The N-terminal region (1-20) is the minimal region necessary for ubiquitination and further proteasomal degradation.
The TXY motif contains the threonine and tyrosine residues whose phosphorylation activates the MAP kinases.

Post-translational modifications Dually phosphorylated on Thr-175 and Tyr-177, which activates the enzyme. Autophosphorylated on threonine and tyrosine residues in vitro.
Ubiquitinated. Ubiquitination may allow its tight kinase activity regulation and rapid turnover. May be ubiquitinated by a SCF E3 ligase.

Images



All lanes : Anti-ERK8 (phospho T175 + Y177) antibody (ab73209) at 1/500 dilution

Lane 1 : Jurkat cell extract

Lane 2 : Jurkat cell extract with immunising phosphopeptide at 10 µg

Lysates/proteins at 30 µg per lane.

Predicted band size: 60 kDa

Observed band size: 50 kDa

Please note: All products are "FOR RESEARCH USE ONLY. NOT FOR USE IN DIAGNOSTIC PROCEDURES"

Our Abpromise to you: Quality guaranteed and expert technical support

- Replacement or refund for products not performing as stated on the datasheet
- Valid for 12 months from date of delivery
- Response to your inquiry within 24 hours
- We provide support in Chinese, English, French, German, Japanese and Spanish
- Extensive multi-media technical resources to help you
- We investigate all quality concerns to ensure our products perform to the highest standards

If the product does not perform as described on this datasheet, we will offer a refund or replacement. For full details of the Abpromise, please visit <https://www.abcam.com/abpromise> or contact our technical team.

Terms and conditions

- Guarantee only valid for products bought direct from Abcam or one of our authorized distributors