


Anti-Erlin-2 antibody [EPR8088] ab129207

Recombinant RabMAb

3 References 5 Images

Overview

| | |
|---------------------|---|
| Product name | Anti-Erlin-2 antibody [EPR8088] |
| Description | Rabbit monoclonal [EPR8088] to Erlin-2 |
| Host species | Rabbit |
| Tested applications | Suitable for: WB, IHC-P, ICC/IF Unsuitable for: Flow Cyt or IP |
| Species reactivity | Reacts with: Human Predicted to work with: Mouse  |
| Immunogen | Synthetic peptide within Human Erlin-2 aa 50-150. The exact sequence is proprietary. |
| Positive control | Fetal kidney, 293T, HepG2, and HeLa lysates; Human endometrium adenocarcinoma; HepG2 cells |
| General notes | <p>This product is a recombinant monoclonal antibody, which offers several advantages including:</p> <ul style="list-style-type: none">- High batch-to-batch consistency and reproducibility- Improved sensitivity and specificity- Long-term security of supply- Animal-free production <p>For more information see here.</p> <p>Our RabMAb[®] technology is a patented hybridoma-based technology for making rabbit monoclonal antibodies. For details on our patents, please refer to RabMAb[®] patents.</p> <p>Rat: We have preliminary internal testing data to indicate this antibody may not react with this species. Please contact us for more information.</p> |

Properties

| | |
|---|---|
| Form | Liquid |
| Storage instructions | Shipped at 4°C. Store at +4°C short term (1-2 weeks). Upon delivery aliquot. Store at -20°C. Stable for 12 months at -20°C. |
| Dissociation constant (K _D) | K _D = 5.40 x 10 ⁻¹³ M |





[Learn more about K_D](#)

| | |
|-----------------------|---|
| Storage buffer | pH: 7.20 Preservative: 0.01% Sodium azide Constituents: 9% PBS, 40% Glycerol (glycerin, glycerine), 0.05% BSA, 50% Tissue culture supernatant |
| Purity | Protein A purified |
| Clonality | Monoclonal |
| Clone number | EPR8088 |
| Isotype | IgG |

Applications

The Abpromise guarantee Our [Abpromise guarantee](#) covers the use of ab129207 in the following tested applications. The application notes include recommended starting dilutions; optimal dilutions/concentrations should be determined by the end user.

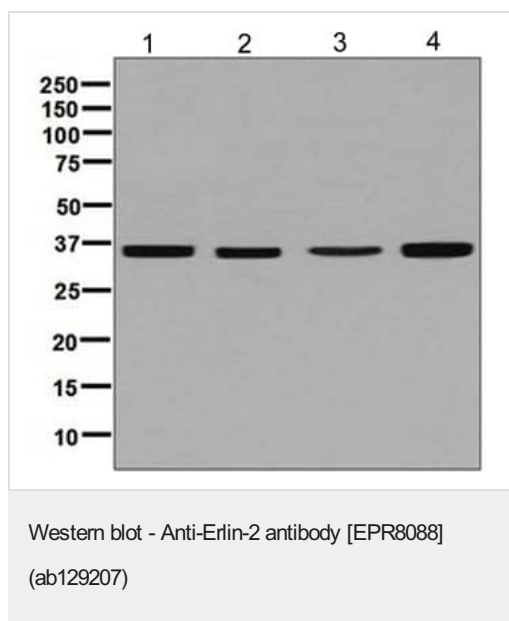
| Application | Abreviews | Notes |
|---------------|-----------|--|
| WB | | 1/1000 - 1/10000. Predicted molecular weight: 38 kDa. |
| IHC-P | | 1/50 - 1/100. Perform heat mediated antigen retrieval with citrate buffer pH 6 before commencing with IHC staining protocol. |
| ICC/IF | | 1/100 - 1/250. |

Application notes Is unsuitable for Flow Cyt or IP.

Target

| | |
|------------------------------|--|
| Function | Component of the ERLIN1/ERLIN2 complex which mediates the endoplasmic reticulum-associated degradation (ERAD) of inositol 1,4,5-trisphosphate receptors (IP3Rs). Also involved in ITPR1 degradation by the ERAD pathway. |
| Tissue specificity | Ubiquitous. |
| Sequence similarities | Belongs to the band 7/mec-2 family. |
| Cellular localization | Endoplasmic reticulum membrane. Associated with lipid raft-like domains of the endoplasmic reticulum membrane. |

Images



All lanes : Anti-Erlin-2 antibody [EPR8088] (ab129207) at 1/1000 dilution

Lane 1 : Fetal kidney tissue lysate

Lane 2 : 293T cell lysate

Lane 3 : HepG2 cell lysate

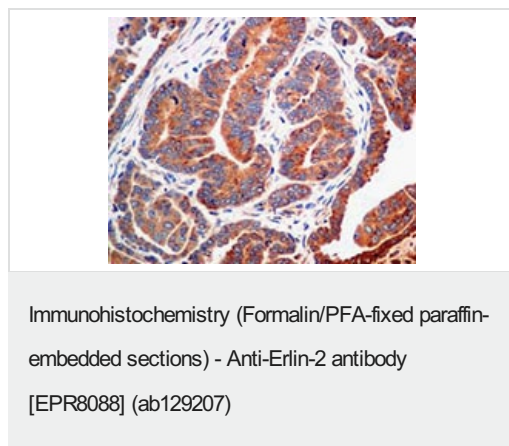
Lane 4 : HeLa cell lysate

Lysates/proteins at 10 µg per lane.

Secondary

All lanes : Goat anti-rabbit HRP conjugated at 1/2000 dilution

Predicted band size: 38 kDa

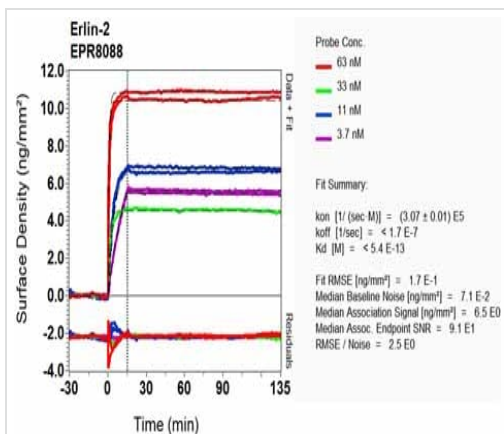


ab129207, at 1/50 dilution, staining Erlin-2 in paraffin-embedded Human endometrium adenocarcinoma tissue by Immunohistochemistry.

Perform heat mediated antigen retrieval with citrate buffer pH 6 before commencing with IHC staining protocol.



ab129207, at 1/100 dilution, staining Erlin-2 in HepG2 cells by Immunofluorescence.



SPR Scanning - Anti-Erlin-2 antibody [EPR8088]
(ab129207)

Equilibrium dissociation constant (K_D)

Learn more about K_D

[Click here to learn more about \$K_D\$](#)

Why choose a recombinant antibody?

Research with confidence
Consistent and reproducible results

Long-term and scalable supply
Recombinant technology

Success from the first experiment
Confirmed specificity

Ethical standards compliant
Animal-free production

Anti-Erlin-2 antibody [EPR8088] (ab129207)

Please note: All products are "FOR RESEARCH USE ONLY. NOT FOR USE IN DIAGNOSTIC PROCEDURES"

Our Abpromise to you: Quality guaranteed and expert technical support

- Replacement or refund for products not performing as stated on the datasheet
- Valid for 12 months from date of delivery
- Response to your inquiry within 24 hours
- We provide support in Chinese, English, French, German, Japanese and Spanish
- Extensive multi-media technical resources to help you
- We investigate all quality concerns to ensure our products perform to the highest standards

If the product does not perform as described on this datasheet, we will offer a refund or replacement. For full details of the Abpromise, please visit <https://www.abcam.com/abpromise> or contact our technical team.

Terms and conditions

- Guarantee only valid for products bought direct from Abcam or one of our authorized distributors