


## Product datasheet

# Anti-ERp29 antibody [EPR12985] ab175193

**KO VALIDATED** Recombinant RabMAB

★★★★★ [1 Abreviews](#) [6 Images](#)

### Overview

<b>Product name</b>	Anti-ERp29 antibody [EPR12985]
<b>Description</b>	Rabbit monoclonal [EPR12985] to ERp29
<b>Host species</b>	Rabbit
<b>Tested applications</b>	<b>Suitable for:</b> IHC-P, WB, ICC/IF <b>Unsuitable for:</b> Flow Cyt or IP
<b>Species reactivity</b>	<b>Reacts with:</b> Human <b>Predicted to work with:</b> Rat 
<b>Immunogen</b>	Synthetic peptide. This information is proprietary to Abcam and/or its suppliers.
<b>Positive control</b>	WB: HepG2, MCF7, A431, and HEK293T cell lysate. IHC-P: Human kidney and thyroid gland tissues. ICC/IF: MCF7 cells.
<b>General notes</b>	<p>This product is a recombinant monoclonal antibody, which offers several advantages including:</p> <ul style="list-style-type: none"><li>- High batch-to-batch consistency and reproducibility</li><li>- Improved sensitivity and specificity</li><li>- Long-term security of supply</li><li>- Animal-free production</li></ul> <p>For more information <a href="#">see here</a>.</p> <p>Our RabMAB<sup>®</sup> technology is a patented hybridoma-based technology for making rabbit monoclonal antibodies. For details on our patents, please refer to <a href="#">RabMAB<sup>®</sup> patents</a>.</p> <p>Mouse: We have preliminary internal testing data to indicate this antibody may not react with this species. Please contact us for more information.</p>

### Properties

<b>Form</b>	Liquid
<b>Storage instructions</b>	Shipped at 4°C. Store at +4°C short term (1-2 weeks). Upon delivery aliquot. Store at -20°C long term. Avoid freeze / thaw cycle.
<b>Storage buffer</b>	pH: 7.20 Preservative: 0.01% Sodium azide Constituents: 9% PBS, 40% Glycerol (glycerin, glycerine), 0.05% BSA, 50% Tissue culture supernatant

<b>Purity</b>	Tissue culture supernatant
<b>Clonality</b>	Monoclonal
<b>Clone number</b>	EPR12985
<b>Isotype</b>	IgG

## Applications

**The Abpromise guarantee** Our **Abpromise guarantee** covers the use of ab175193 in the following tested applications.

The application notes include recommended starting dilutions; optimal dilutions/concentrations should be determined by the end user.

Application	Abreviews	Notes
IHC-P		1/50 - 1/100. Perform heat mediated antigen retrieval with citrate buffer pH 6 before commencing with IHC staining protocol.
WB	★★★★★ (1)	1/1000 - 1/10000. Predicted molecular weight: 29 kDa.
ICC/IF		1/50 - 1/100.

**Application notes** Is unsuitable for Flow Cyt or IP.

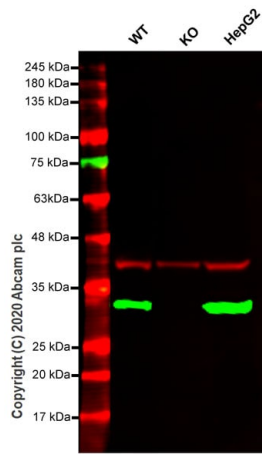
## Target

**Function** Does not seem to be a disulfide isomerase. Plays an important role in the processing of secretory proteins within the endoplasmic reticulum (ER), possibly by participating in the folding of proteins in the ER.

**Tissue specificity** Ubiquitous. Mostly expressed in secretory tissues.

**Cellular localization** Endoplasmic reticulum lumen. Melanosome. Identified by mass spectrometry in melanosome fractions from stage I to stage IV.

## Images



Western blot - Anti-ERp29 antibody [EPR12985] (ab175193)

**All lanes** : Anti-ERp29 antibody [EPR12985] (ab175193) at 1/500 dilution

**Lane 1** : Wild-type HEK293T cell lysate

**Lane 2** : ERP29 knockout HEK293T cell lysate

**Lane 3** : HepG2 cell lysate

Lysates/proteins at 20 µg per lane.

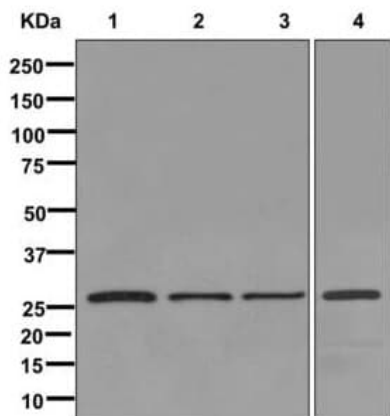
Performed under reducing conditions.

**Predicted band size:** 29 kDa

**Observed band size:** 29 kDa

**Lanes 1-3:** Merged signal (red and green). Green - ab175193 observed at 29 kDa. Red - loading control, **ab8245** observed at 37 kDa.

ab175193 Anti-ERp29 antibody [EPR12985] was shown to specifically react with ERp29 in wild-type HEK293T cells. Loss of signal was observed when knockout cell line **ab266543** (knockout cell lysate **ab257188**) was used. Wild-type and ERp29 knockout samples were subjected to SDS-PAGE. ab175193 and Anti-GAPDH antibody [6C5] - Loading Control (**ab8245**) were incubated overnight at 4°C at 1 in 500 dilution and 1 in 20000 dilution respectively. Blots were developed with Goat anti-Rabbit IgG H&L (IRDye® 800CW) preadsorbed (**ab216773**) and Goat anti-Mouse IgG H&L (IRDye® 680RD) preadsorbed (**ab216776**) secondary antibodies at 1 in 10000 dilution for 1 hour at room temperature before imaging.



Western blot - Anti-ERp29 antibody [EPR12985] (ab175193)

**All lanes** : Anti-ERp29 antibody [EPR12985] (ab175193) at 1/1000 dilution

**Lane 1** : HepG2 cell lysate

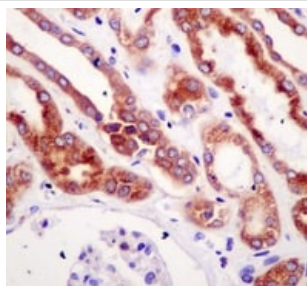
**Lane 2** : MCF7 cell lysate

**Lane 3** : A431 cell lysate

**Lane 4** : 293T cell lysate

Lysates/proteins at 10 µg per lane.

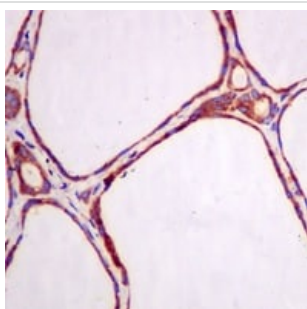
**Predicted band size:** 29 kDa



Immunohistochemistry (Formalin/PFA-fixed paraffin-embedded sections) - Anti-ERp29 antibody [EPR12985] (ab175193)

Immunohistochemical analysis of paraffin-embedded Human kidney tissue labeling ERp29 with ab175193 at a 1/50 dilution.

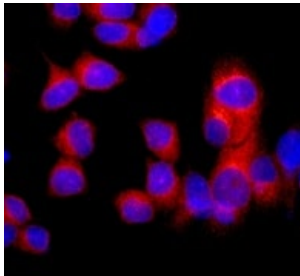
Perform heat mediated antigen retrieval with citrate buffer pH 6 before commencing with IHC staining protocol.



Immunohistochemistry (Formalin/PFA-fixed paraffin-embedded sections) - Anti-ERp29 antibody [EPR12985] (ab175193)

Immunohistochemical analysis of paraffin-embedded Human thyroid gland tissue labeling ERp29 with ab175193 at a 1/50 dilution.

Perform heat mediated antigen retrieval with citrate buffer pH 6 before commencing with IHC staining protocol.



Immunofluorescence analysis of MCF7 cells labeling ERp29 with ab175193 at a 1/50 dilution (red) and DAPI nuclear staining (blue).

Immunocytochemistry/ Immunofluorescence - Anti-ERp29 antibody [EPR12985] (ab175193)

Why choose a recombinant antibody?



**Research with confidence**  
Consistent and reproducible results



**Long-term and scalable supply**  
Recombinant technology



**Success from the first experiment**  
Confirmed specificity



**Ethical standards compliant**  
Animal-free production

Anti-ERp29 antibody [EPR12985] (ab175193)

**Please note:** All products are "FOR RESEARCH USE ONLY. NOT FOR USE IN DIAGNOSTIC PROCEDURES"

### Our Abpromise to you: Quality guaranteed and expert technical support

- Replacement or refund for products not performing as stated on the datasheet
- Valid for 12 months from date of delivery
- Response to your inquiry within 24 hours
- We provide support in Chinese, English, French, German, Japanese and Spanish
- Extensive multi-media technical resources to help you
- We investigate all quality concerns to ensure our products perform to the highest standards

If the product does not perform as described on this datasheet, we will offer a refund or replacement. For full details of the Abpromise, please visit <https://www.abcam.com/abpromise> or contact our technical team.

## Terms and conditions

---

- Guarantee only valid for products bought direct from Abcam or one of our authorized distributors