


Product datasheet

Anti-ESAM antibody ab74777

[1 Abreviews](#) [1 Image](#)

Overview

Product name	Anti-ESAM antibody
Description	Rabbit polyclonal to ESAM
Host species	Rabbit
Tested applications	Suitable for: WB Unsuitable for: ICC/IF
Species reactivity	Reacts with: Human Predicted to work with: Cynomolgus monkey 
Immunogen	Synthetic peptide corresponding to Human ESAM aa 100-200 conjugated to keyhole limpet haemocyanin. (Peptide available as ab101730)
Positive control	This antibody gave a positive signal in the following lysates: Human Heart tissue; Human Liver tissue; Human Kidney tissue; Human Lung tissue; HepG2 whole cell; HEK293 whole cell.
General notes	<p>The Life Science industry has been in the grips of a reproducibility crisis for a number of years. Abcam is leading the way in addressing this with our range of recombinant monoclonal antibodies and knockout edited cell lines for gold-standard validation. Please check that this product meets your needs before purchasing.</p> <p>If you have any questions, special requirements or concerns, please send us an inquiry and/or contact our Support team ahead of purchase. Recommended alternatives for this product can be found below, along with publications, customer reviews and Q&As</p>

Properties

Form	Liquid
Storage instructions	Shipped at 4°C. Store at +4°C short term (1-2 weeks). Upon delivery aliquot. Store at -20°C or -80°C. Avoid freeze / thaw cycle.
Storage buffer	pH: 7.40 Preservative: 0.02% Sodium azide Constituent: PBS

Batches of this product that have a concentration < 1mg/ml may have BSA added as a stabilising agent. If you would like information about the formulation of a specific lot, please contact our scientific support team who will be happy to help.

Purity	Immunogen affinity purified
Clonality	Polyclonal
Isotype	IgG

Applications

The Abpromise guarantee Our **Abpromise guarantee** covers the use of ab74777 in the following tested applications. The application notes include recommended starting dilutions; optimal dilutions/concentrations should be determined by the end user.

Application	Abreviews	Notes
WB		Use a concentration of 1 µg/ml. Detects a band of approximately 37 kDa (predicted molecular weight: 41 kDa).

Application notes Is unsuitable for ICC/IF.

Target

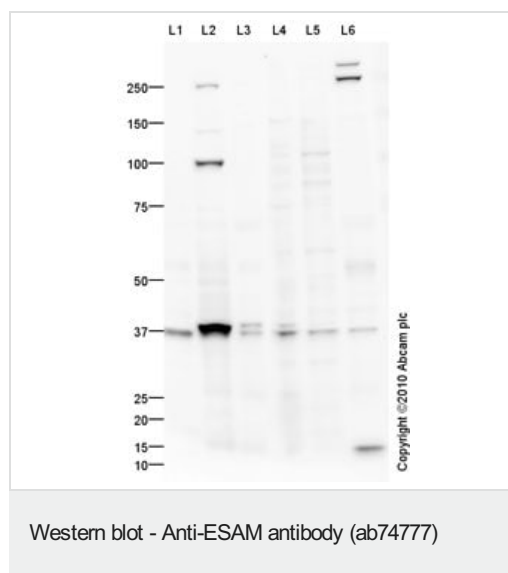
Function Can mediate aggregation most likely through a homophilic molecular interaction.

Tissue specificity Highly expressed in endothelial cells.

Sequence similarities Contains 1 Ig-like C2-type (immunoglobulin-like) domain.
Contains 1 Ig-like V-type (immunoglobulin-like) domain.

Cellular localization Cell junction > adherens junction. Cell junction > tight junction. Cell membrane.

Images



All lanes : Anti-ESAM antibody (ab74777) at 1 µg/ml

Lane 1 : Human heart tissue lysate - total protein ([ab29431](#))

Lane 2 : Human liver tissue lysate - total protein ([ab29889](#))

Lane 3 : Human kidney tissue lysate - total protein ([ab30203](#))

Lane 4 : HepG2 (Human hepatocellular liver carcinoma cell line)
Whole Cell Lysate

Lane 5 : HEK293 (Human embryonic kidney cell line) Whole Cell
Lysate

Lane 6 : Lung (Human) Tissue Lysate

Lysates/proteins at 10 µg per lane.

Secondary

All lanes : Annexin-2/ANXA2 overexpression 293T lysate (whole cell) ([ab94080](#)) at 1/5000 dilution

Developed using the ECL technique.

Performed under reducing conditions.

Predicted band size: 41 kDa

Observed band size: 37,41 kDa

Additional bands at: 100 kDa, 15 kDa, 250 kDa. We are unsure as to the identity of these extra bands.

Exposure time: 3 minutes

The ESAM protein has a predicted molecular weight of 41 kDa. The first 29 amino acids of the ESAM sequence act as a signal sequence. The band at 37 kDa may represent the cleaved form of the ESAM protein.

Please note: All products are "FOR RESEARCH USE ONLY. NOT FOR USE IN DIAGNOSTIC PROCEDURES"

Our Abpromise to you: Quality guaranteed and expert technical support

- Replacement or refund for products not performing as stated on the datasheet
- Valid for 12 months from date of delivery
- Response to your inquiry within 24 hours

- We provide support in Chinese, English, French, German, Japanese and Spanish
- Extensive multi-media technical resources to help you
- We investigate all quality concerns to ensure our products perform to the highest standards

If the product does not perform as described on this datasheet, we will offer a refund or replacement. For full details of the Abpromise, please visit <https://www.abcam.com/abpromise> or contact our technical team.

Terms and conditions

- Guarantee only valid for products bought direct from Abcam or one of our authorized distributors