

## Product datasheet

### Anti-ESD antibody [EPR8446] ab131211

KO VALIDATED Recombinant RabMAb

4 Images

#### Overview

<b>Product name</b>	Anti-ESD antibody [EPR8446]
<b>Description</b>	Rabbit monoclonal [EPR8446] to ESD
<b>Host species</b>	Rabbit
<b>Tested applications</b>	<b>Suitable for:</b> Flow Cyt (Intra), WB <b>Unsuitable for:</b> ICC/IF, IHC-P or IP
<b>Species reactivity</b>	<b>Reacts with:</b> Human
<b>Immunogen</b>	Synthetic peptide. This information is proprietary to Abcam and/or its suppliers.
<b>Positive control</b>	WB: HEK293T, K562, HeLa, Jurkat and Caco-2 cell lysates. Flow Cyt (intra): Jurkat cells.
<b>General notes</b>	<p>This product is a recombinant monoclonal antibody, which offers several advantages including:</p> <ul style="list-style-type: none"><li>- High batch-to-batch consistency and reproducibility</li><li>- Improved sensitivity and specificity</li><li>- Long-term security of supply</li><li>- Animal-free production</li></ul> <p>For more information <a href="#">see here</a>.</p> <p>Our RabMAb<sup>®</sup> technology is a patented hybridoma-based technology for making rabbit monoclonal antibodies. For details on our patents, please refer to <a href="#">RabMAb<sup>®</sup> patents</a>.</p> <p>Mouse, Rat: We have preliminary internal testing data to indicate this antibody may not react with these species. Please contact us for more information.</p>

#### Properties

<b>Form</b>	Liquid
<b>Storage instructions</b>	Shipped at 4°C. Store at -20°C. Stable for 12 months at -20°C.
<b>Storage buffer</b>	pH: 7.20 Preservative: 0.01% Sodium azide Constituents: 9% PBS, 40% Glycerol (glycerin, glycerine), 0.05% BSA, 50% Tissue culture supernatant
<b>Purity</b>	Tissue culture supernatant
<b>Clonality</b>	Monoclonal

Clone number                   EPR8446  
 Isotype                            IgG

## Applications

**The Abpromise guarantee**           Our **Abpromise guarantee** covers the use of ab131211 in the following tested applications.  
 The application notes include recommended starting dilutions; optimal dilutions/concentrations should be determined by the end user.

Application	Abreviews	Notes
Flow Cyt (Intra)		1/10 - 1/100. <b>ab172730</b> - Rabbit monoclonal IgG, is suitable for use as an isotype control with this antibody.
WB		1/1000 - 1/10000. Predicted molecular weight: 31 kDa.

**Application notes**                    Is unsuitable for ICC/IF, IHC-P or IP.

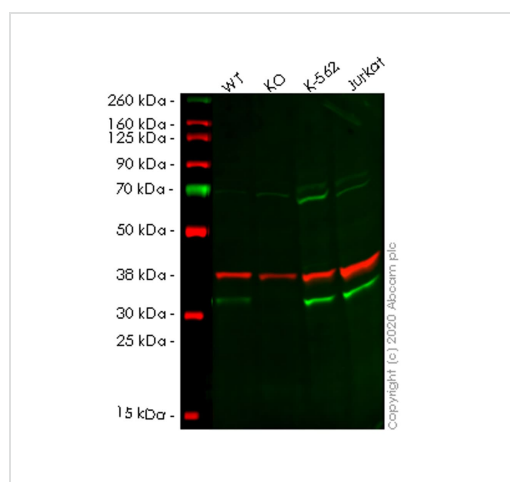
## Target

**Function**                                Serine hydrolase involved in the detoxification of formaldehyde.

**Sequence similarities**                Belongs to the esterase D family.

**Cellular localization**                Cytoplasm. Cytoplasmic vesicle.

## Images



Western blot - Anti-ESD antibody [EPR8446]  
 (ab131211)

**All lanes** : Anti-ESD antibody [EPR8446] (ab131211) at 1/1000 dilution

**Lane 1** : Wild-type HEK-293T (Human epithelial cell line from embryonic kidney transformed with large T antigen) whole cell lysate

**Lane 2** : ESD knockout HEK-293T (Human epithelial cell line from embryonic kidney transformed with large T antigen) whole cell lysate

**Lane 3** : K562 (Human chronic myelogenous leukemia lymphoblast cell line) whole cell lysate

**Lane 4** : Jurkat (Human T cell leukemia cell line from peripheral blood) whole cell lysate

Lysates/proteins at 20 µg per lane.

### Secondary

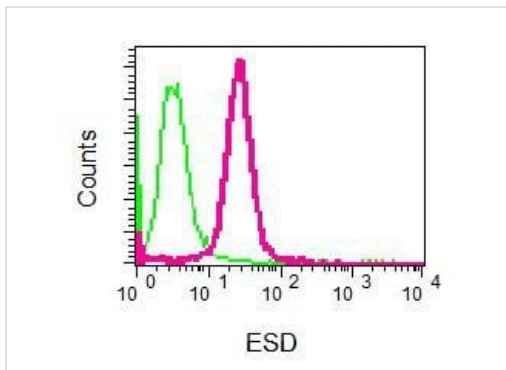
**All lanes** : Goat anti-Rabbit IgG H&L (IRDye® 800CW) preadsorbed (**ab216773**) at 1/10000 dilution

**Predicted band size:** 31 kDa

**Observed band size:** 31 kDa

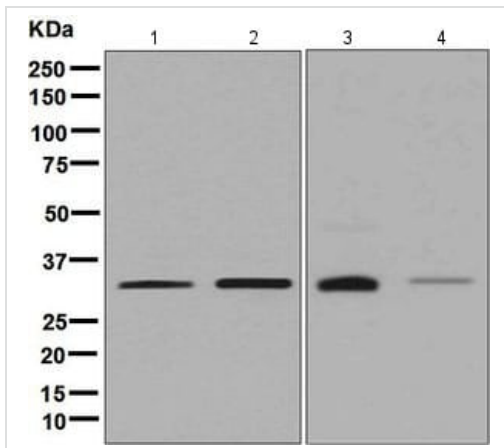
**Lanes 1-4:** Merged signal (red and green). Green - ab131211 observed at 31 kDa. Red - loading control **ab8245** observed at 36 kDa.

ab131211 Anti-ESD antibody [EPR8446] was shown to specifically react with ESD in wild-type HEK-293T cells. Loss of signal was observed when knockout cell line **ab266360** (knockout cell lysate **ab257942**) was used. Wild-type and ESD knockout samples were subjected to SDS-PAGE. ab131211 and Anti-GAPDH antibody [6C5] - Loading Control (**ab8245**) were incubated overnight at 4°C at 1 in 1000 dilution and 1 in 20000 dilution respectively. Blots were developed with Goat anti-Rabbit IgG H&L (IRDye® 800CW) preadsorbed (**ab216773**) and Goat anti-Mouse IgG H&L (IRDye® 680RD) preadsorbed (**ab216776**) secondary antibodies at 1 in 20000 dilution for 1 hour at room temperature before imaging.



Flow Cytometry (Intracellular) - Anti-ESD antibody [EPR8446] (ab131211)

ab131211 at 1/10 labelling ESD in permeabilized Jurkat cells by intracellular flow cytometry. Rabbit IgG negative control is in green.



Western blot - Anti-ESD antibody [EPR8446]  
(ab131211)

**All lanes** : Anti-ESD antibody [EPR8446] (ab131211) at 1/1000 dilution

**Lane 1** : K562 cell lysate

**Lane 2** : Jurkat cell lysate

**Lane 3** : Caco-2 cell lysate

**Lane 4** : HeLa cell lysate

Lysates/proteins at 10 µg per lane.

**Predicted band size:** 31 kDa

Why choose a recombinant antibody?

**Research with confidence**  
Consistent and reproducible results

**Long-term and scalable supply**  
Recombinant technology

**Success from the first experiment**  
Confirmed specificity

**Ethical standards compliant**  
Animal-free production

Anti-ESD antibody [EPR8446] (ab131211)

**Please note:** All products are "FOR RESEARCH USE ONLY. NOT FOR USE IN DIAGNOSTIC PROCEDURES"

### Our Abpromise to you: Quality guaranteed and expert technical support

- Replacement or refund for products not performing as stated on the datasheet
- Valid for 12 months from date of delivery
- Response to your inquiry within 24 hours
- We provide support in Chinese, English, French, German, Japanese and Spanish
- Extensive multi-media technical resources to help you
- We investigate all quality concerns to ensure our products perform to the highest standards

If the product does not perform as described on this datasheet, we will offer a refund or replacement. For full details of the Abpromise, please visit <https://www.abcam.com/abpromise> or contact our technical team.

### Terms and conditions

- Guarantee only valid for products bought direct from Abcam or one of our authorized distributors