

Product datasheet

Anti-ESM1 antibody ab103590

★★★★☆ [3 Abreviews](#) [14 References](#) [2 Images](#)

Overview

Product name	Anti-ESM1 antibody
Description	Rabbit polyclonal to ESM1
Host species	Rabbit
Tested applications	Suitable for: WB, ICC/IF
Species reactivity	Reacts with: Mouse, Human
Immunogen	Recombinant full length protein within Human ESM1 aa 1-200. The exact immunogen sequence used to generate this antibody is proprietary information. If additional detail on the immunogen is needed to determine the suitability of the antibody for your needs, please contact our Scientific Support team to discuss your requirements.

General notes

The Life Science industry has been in the grips of a reproducibility crisis for a number of years. Abcam is leading the way in addressing this with our range of recombinant monoclonal antibodies and knockout edited cell lines for gold-standard validation. Please check that this product meets your needs before purchasing.

If you have any questions, special requirements or concerns, please send us an inquiry and/or contact our Support team ahead of purchase. Recommended alternatives for this product can be found below, along with publications, customer reviews and Q&As

Properties

Form	Liquid
Storage instructions	Shipped at 4°C. Upon delivery aliquot. Store at -20°C or -80°C. Avoid freeze / thaw cycle.
Storage buffer	pH: 7.40 Constituent: 100% PBS
Purity	Protein A purified
Clonality	Polyclonal
Isotype	IgG

Applications

The Abpromise guarantee

Our **[Abpromise guarantee](#)** covers the use of ab103590 in the following tested applications.

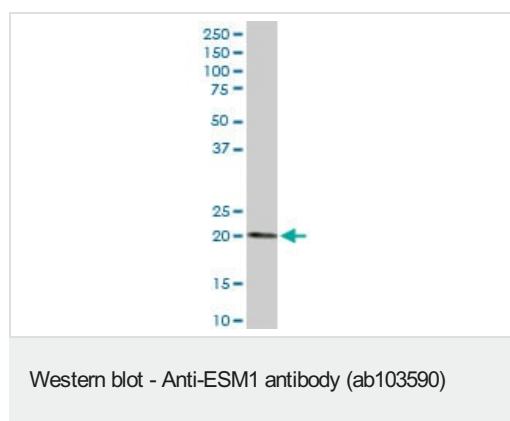
The application notes include recommended starting dilutions; optimal dilutions/concentrations should be determined by the end user.

Application	Abreviews	Notes
WB		1/500 - 1/1000. Predicted molecular weight: 20 kDa.
ICC/IF	★★★★★ (2)	Use at an assay dependent concentration.

Target

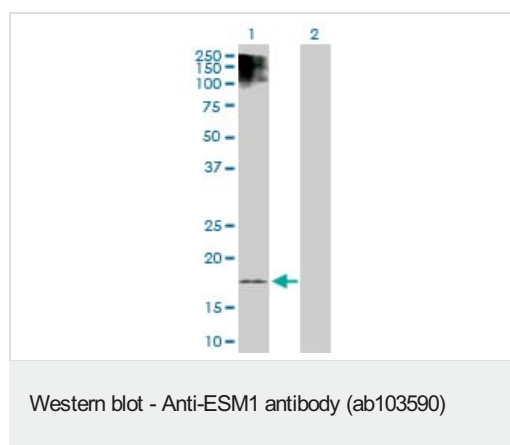
Function	May have potent implications in lung endothelial cell-leukocyte interactions.
Tissue specificity	Expressed in lung, on the vascular capillary network within alveolar walls, and also at lower level in kidney.
Sequence similarities	Contains 1 IGFBP N-terminal domain.
Post-translational modifications	May contain intrachain disulfide bonds.
Cellular localization	Secreted.

Images



Anti-ESM1 antibody (ab103590) at 1/500 dilution + Human kidney tissue lysate at 50 µg

Predicted band size: 20 kDa



All lanes : Anti-ESM1 antibody (ab103590) at 1/500 dilution

Lane 1 : ESM1 transfected 293T cell line lysate

Lane 2 : Non-transfected 293T cell line lysate

Lysates/proteins at 25 µg per lane.

Predicted band size: 20 kDa

Please note: All products are "FOR RESEARCH USE ONLY. NOT FOR USE IN DIAGNOSTIC PROCEDURES"

Our Abpromise to you: Quality guaranteed and expert technical support

- Replacement or refund for products not performing as stated on the datasheet
- Valid for 12 months from date of delivery
- Response to your inquiry within 24 hours

- We provide support in Chinese, English, French, German, Japanese and Spanish
- Extensive multi-media technical resources to help you
- We investigate all quality concerns to ensure our products perform to the highest standards

If the product does not perform as described on this datasheet, we will offer a refund or replacement. For full details of the Abpromise, please visit <https://www.abcam.com/abpromise> or contact our technical team.

Terms and conditions

- Guarantee only valid for products bought direct from Abcam or one of our authorized distributors