

Anti-ESRP2 antibody ab113486

[6 References](#) [3 Images](#)

Overview

Product name	Anti-ESRP2 antibody
Description	Rabbit polyclonal to ESRP2
Host species	Rabbit
Specificity	ab113486 is predicted to not cross-react with other ESRP family members. At least two isoforms of ESRP2 are known to exist; ab113486 will detect both.
Tested applications	Suitable for: IHC-P, WB, IHC-P
Species reactivity	Reacts with: Human
Immunogen	Synthetic peptide containing a 17 residue sequence from the C terminal region of Human ESRP2 (GenBank accession no. NP_079215).
Positive control	WB: Human lung tissue lysate. IHC: Human lung tissue.
General notes	<p>The Life Science industry has been in the grips of a reproducibility crisis for a number of years. Abcam is leading the way in addressing this with our range of recombinant monoclonal antibodies and knockout edited cell lines for gold-standard validation. Please check that this product meets your needs before purchasing.</p> <p>If you have any questions, special requirements or concerns, please send us an inquiry and/or contact our Support team ahead of purchase. Recommended alternatives for this product can be found below, along with publications, customer reviews and Q&As</p>

Properties

Form	Liquid
Storage instructions	Shipped at 4°C. Store at 4°C (stable for up to 12 months).
Storage buffer	<p>pH: 7.2</p> <p>Preservative: 0.02% Sodium azide</p> <p>Constituent: 99.98% PBS</p>
Purity	Immunogen affinity purified
Clonality	Polyclonal
Isotype	IgG

Applications

The Abpromise guarantee

Our **Abpromise guarantee** covers the use of ab113486 in the following tested applications.

The application notes include recommended starting dilutions; optimal dilutions/concentrations should be determined by the end user.

Application	Abreviews	Notes
IHC-P		Use a concentration of 20 µg/ml. Immunohistochemistry (Immunofluorescence detection).
WB		Use a concentration of 0.5 - 1 µg/ml. Predicted molecular weight: 78 kDa.
IHC-P		Use a concentration of 5 µg/ml.

Target**Function**

mRNA splicing factor that regulates the formation of epithelial cell-specific isoforms. Specifically regulates the expression of FGFR2-IIIb, an epithelial cell-specific isoform of FGFR2. Also regulates the splicing of CD44, CTNND1, ENAH, 3 transcripts that undergo changes in splicing during the epithelial-to-mesenchymal transition (EMT). Acts by directly binding specific sequences in mRNAs. Binds the GU-rich sequence motifs in the ISE/ISS-3, a cis-element regulatory region present in the mRNA of FGFR2.

Tissue specificity

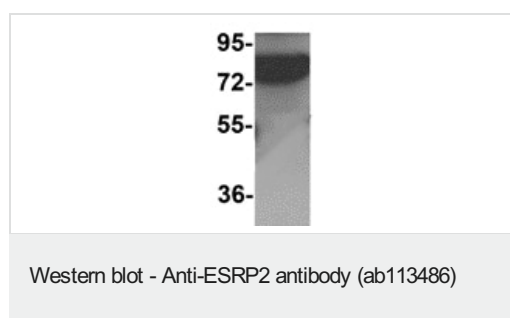
Epithelial cell-specific.

Sequence similarities

Belongs to the ESRP family.
Contains 3 RRM (RNA recognition motif) domains.

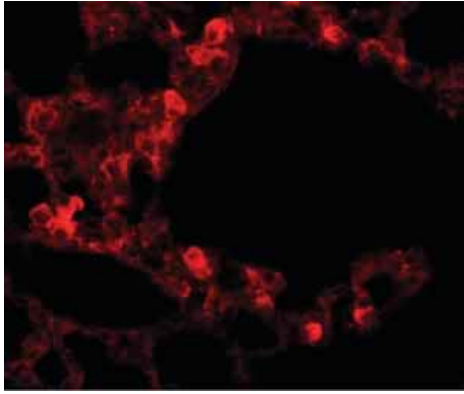
Cellular localization

Nucleus.

Images

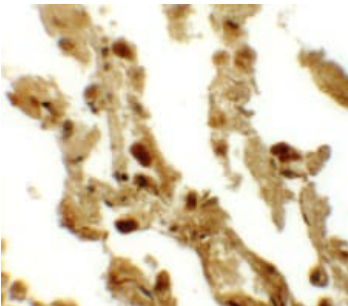
Anti-ESRP2 antibody (ab113486) at 1 µg/ml + Human lung tissue lysate at 15 µg

Predicted band size: 78 kDa



Immunohistochemistry (Immunofluorescence) of ESRP2 in Human lung tissue cells with ab113486 at 20 ug/mL.

Immunohistochemistry paraffin embedded sections -
Anti-ESRP2 antibody (ab113486)



Immunohistochemical analysis of Human lung tissue, staining ESRP2 with ab113486 at 5 µg/ml.

Immunohistochemistry (Formalin/PFA-fixed paraffin-
embedded sections) - Anti-ESRP2 antibody
(ab113486)

Please note: All products are "FOR RESEARCH USE ONLY. NOT FOR USE IN DIAGNOSTIC PROCEDURES"

Our Abpromise to you: Quality guaranteed and expert technical support

- Replacement or refund for products not performing as stated on the datasheet
- Valid for 12 months from date of delivery
- Response to your inquiry within 24 hours
- We provide support in Chinese, English, French, German, Japanese and Spanish
- Extensive multi-media technical resources to help you

- We investigate all quality concerns to ensure our products perform to the highest standards

If the product does not perform as described on this datasheet, we will offer a refund or replacement. For full details of the Abpromise, please visit <https://www.abcam.com/abpromise> or contact our technical team.

Terms and conditions

- Guarantee only valid for products bought direct from Abcam or one of our authorized distributors