




Product datasheet

Anti-Estrogen Receptor alpha antibody ab3575

★★★★☆ [3 Abreviews](#) [33 References](#) [3 Images](#)

Overview

Product name	Anti-Estrogen Receptor alpha antibody
Description	Rabbit polyclonal to Estrogen Receptor alpha
Host species	Rabbit
Tested applications	Suitable for: IHC-P, WB, ICC/IF
Species reactivity	Reacts with: Rat, Human, Recombinant fragment Predicted to work with: Hamster, Cow, Cat 
Immunogen	Synthetic peptide corresponding to Human Estrogen Receptor alpha aa 21-32. Sequence: NELEPLNRPQLK Database link: P03372 (Peptide available as ab5847)  Run BLAST with  Run BLAST with
Positive control	WB: recombinant fragment; IHC: rat prostate tissue; ICC/IF: T47D and 578T breast cancer cells
General notes	<p>The Life Science industry has been in the grips of a reproducibility crisis for a number of years. Abcam is leading the way in addressing this with our range of recombinant monoclonal antibodies and knockout edited cell lines for gold-standard validation. Please check that this product meets your needs before purchasing.</p> <p>If you have any questions, special requirements or concerns, please send us an inquiry and/or contact our Support team ahead of purchase. Recommended alternatives for this product can be found below, along with publications, customer reviews and Q&As</p>

Properties

Form	Liquid
Storage instructions	Shipped at 4°C. Store at +4°C short term (1-2 weeks). Upon delivery aliquot. Store at -20°C or -80°C. Avoid freeze / thaw cycle.
Storage buffer	Preservative: 0.05% Sodium azide Constituents: 0.1% BSA, 99% PBS
Purity	Immunogen affinity purified
Clonality	Polyclonal

Isotype

IgG

Applications

The Abpromise guarantee

Our **Abpromise guarantee** covers the use of ab3575 in the following tested applications.

The application notes include recommended starting dilutions; optimal dilutions/concentrations should be determined by the end user.

Application	Abreviews	Notes
IHC-P	★★★★★ (1)	Use a concentration of 1 - 5 µg/ml.
WB		Use a concentration of 1 µg/ml. Detects a band of approximately 64 kDa (predicted molecular weight: 68 kDa). Can be blocked with Human Estrogen Receptor alpha peptide (ab5847) .
ICC/IF		1/1000 - 1/4000.

Target

Function

Nuclear hormone receptor. The steroid hormones and their receptors are involved in the regulation of eukaryotic gene expression and affect cellular proliferation and differentiation in target tissues. Can activate the transcriptional activity of TFF1.

Sequence similarities

Belongs to the nuclear hormone receptor family. NR3 subfamily.
Contains 1 nuclear receptor DNA-binding domain.

Domain

Composed of three domains: a modulating N-terminal domain, a DNA-binding domain and a C-terminal ligand-binding domain.

Post-translational modifications

Phosphorylated by cyclin A/CDK2. Phosphorylation probably enhances transcriptional activity.
Glycosylated; contains N-acetylglucosamine, probably O-linked.
Ubiquitinated. Deubiquitinated by OTUB1.
Dimethylated by PRMT1 at Arg-260. The methylation may favor cytoplasmic localization.
Palmitoylated (isoform 3). Not biotinylated (isoform 3).

Cellular localization

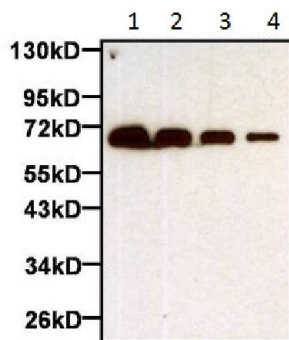
Nucleus. Cytoplasm. Cell membrane. A minor fraction is associated with the inner membrane and
Nucleus. Cytoplasm. Cell membrane. Associated with the inner membrane via palmitoylation.

Images



Immunohistochemistry (Formalin/PFA-fixed paraffin-embedded sections) - Anti-Estrogen Receptor alpha antibody (ab3575)

ab3575 at a dilution of 5 µg/ml staining ER alpha in rat prostate tissue sections.



Western blot - Anti-Estrogen Receptor alpha antibody (ab3575)

All lanes : Anti-Estrogen Receptor alpha antibody (ab3575) at 1/1000 dilution

Lane 1 : Recombinant full-length human Estrogen Receptor alpha protein, 250 ng

Lane 2 : Recombinant full-length human Estrogen Receptor alpha protein, 125 ng

Lane 3 : Recombinant full-length human Estrogen Receptor alpha protein, 62.5 ng

Lane 4 : Recombinant full-length human Estrogen Receptor alpha protein, 31.25 ng

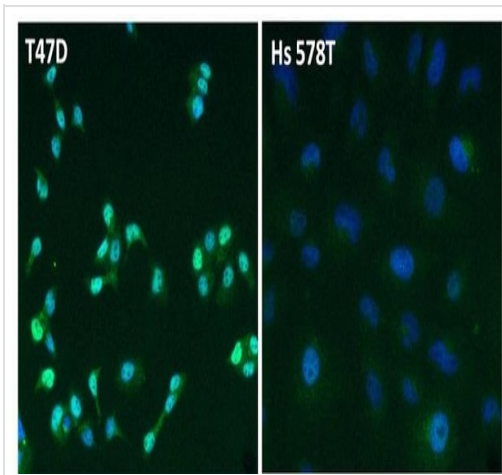
Secondary

All lanes : HRP-conjugated goat anti-rabbit IgG at 1/40000 dilution

Developed using the ECL technique.

Predicted band size: 68 kDa

Blocked with 5% milk in TBST for at least 1 hour at room temperature.



4% paraformaldehyde fixed 0.1% Triton permeabilized T-47D (human ductal breast epithelial tumor cell line) and negative control line Hs 578T cells stained for Estrogen Receptor alpha (green) using ab3575 (1/2000) in ICC/IF. DyLight 488-conjugated goat anti-rabbit IgG at 1/500.

Immunocytochemistry/ Immunofluorescence - Anti-Estrogen Receptor alpha antibody (ab3575)

Please note: All products are "FOR RESEARCH USE ONLY. NOT FOR USE IN DIAGNOSTIC PROCEDURES"

Our Abpromise to you: Quality guaranteed and expert technical support

- Replacement or refund for products not performing as stated on the datasheet
- Valid for 12 months from date of delivery
- Response to your inquiry within 24 hours
- We provide support in Chinese, English, French, German, Japanese and Spanish
- Extensive multi-media technical resources to help you
- We investigate all quality concerns to ensure our products perform to the highest standards

If the product does not perform as described on this datasheet, we will offer a refund or replacement. For full details of the Abpromise, please visit <https://www.abcam.com/abpromise> or contact our technical team.

Terms and conditions

- Guarantee only valid for products bought direct from Abcam or one of our authorized distributors