


Product datasheet

Anti-Estrogen Receptor alpha (phospho S106) antibody ab131111

★ ★ ★ ★ ★ [2 Abreviews](#) [3 Images](#)

Overview

Product name	Anti-Estrogen Receptor alpha (phospho S106) antibody
Description	Rabbit polyclonal to Estrogen Receptor alpha (phospho S106)
Host species	Rabbit
Tested applications	Suitable for: WB, IHC-P, ICC/IF
Species reactivity	Reacts with: Human Predicted to work with: Rat 
Immunogen	Synthetic peptide. This information is proprietary to Abcam and/or its suppliers.
Positive control	MCF cells; MCF7 cell extracts treated with EGF; Human breast carcinoma tissue.
General notes	<p>The Life Science industry has been in the grips of a reproducibility crisis for a number of years. Abcam is leading the way in addressing this with our range of recombinant monoclonal antibodies and knockout edited cell lines for gold-standard validation. Please check that this product meets your needs before purchasing.</p> <p>If you have any questions, special requirements or concerns, please send us an inquiry and/or contact our Support team ahead of purchase. Recommended alternatives for this product can be found below, along with publications, customer reviews and Q&As</p>

Properties

Form	Liquid
Storage instructions	Shipped at 4°C. Store at -20°C. Stable for 12 months at -20°C.
Storage buffer	<p>pH: 7.40</p> <p>Preservative: 0.02% Sodium azide</p> <p>Constituents: 49% PBS, 50% Glycerol (glycerin, glycerine), 0.88% Sodium chloride</p> <p>PBS without Mg²⁺ and Ca²⁺.</p>
Purity	Immunogen affinity purified
Purification notes	ab131111 was affinity-purified by affinity-chromatography using epitope-specific phosphopeptide. The antibody against non-phosphopeptide was removed by chromatography using non-phosphopeptide corresponding to the phosphorylation site.

Clonality	Polyclonal
Isotype	IgG

Applications

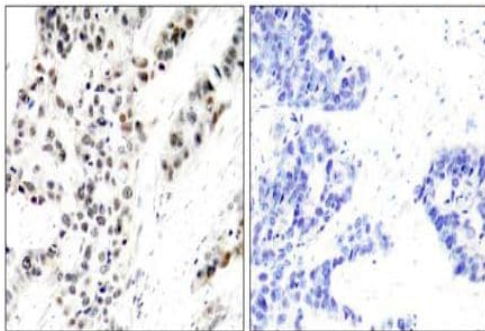
The Abpromise guarantee Our **Abpromise guarantee** covers the use of ab131111 in the following tested applications. The application notes include recommended starting dilutions; optimal dilutions/concentrations should be determined by the end user.

Application	Abreviews	Notes
WB		1/500 - 1/1000. Detects a band of approximately 66 kDa (predicted molecular weight: 66 kDa).
IHC-P	★☆☆☆☆ (1)	1/50 - 1/100.
ICC/IF		1/100 - 1/200.

Target

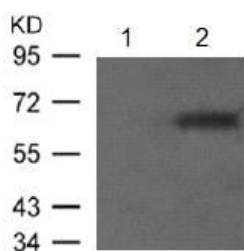
Function	Nuclear hormone receptor. The steroid hormones and their receptors are involved in the regulation of eukaryotic gene expression and affect cellular proliferation and differentiation in target tissues. Can activate the transcriptional activity of TFF1.
Sequence similarities	Belongs to the nuclear hormone receptor family. NR3 subfamily. Contains 1 nuclear receptor DNA-binding domain.
Domain	Composed of three domains: a modulating N-terminal domain, a DNA-binding domain and a C-terminal ligand-binding domain.
Post-translational modifications	Phosphorylated by cyclin A/CDK2. Phosphorylation probably enhances transcriptional activity. Glycosylated; contains N-acetylglucosamine, probably O-linked. Ubiquitinated. Deubiquitinated by OTUB1. Dimethylated by PRMT1 at Arg-260. The methylation may favor cytoplasmic localization. Palmitoylated (isoform 3). Not biotinylated (isoform 3).
Cellular localization	Nucleus. Cytoplasm. Cell membrane. A minor fraction is associated with the inner membrane and Nucleus. Cytoplasm. Cell membrane. Associated with the inner membrane via palmitoylation.

Images



Immunohistochemistry (Formalin/PFA-fixed paraffin-embedded sections) - Anti-Estrogen Receptor alpha (phospho S106) antibody (ab131111)

Immunohistochemical analysis of paraffin-embedded Human breast carcinoma cells labelling Estrogen Receptor alpha (phospho S106) with ab131111 at 1/50 dilution. The image on the right is treated blocking peptide.



Western blot - Anti-Estrogen Receptor alpha (phospho S106) antibody (ab131111)

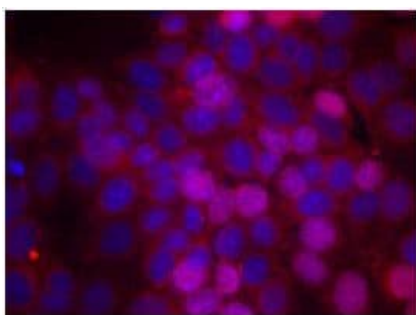
All lanes : Anti-Estrogen Receptor alpha (phospho S106) antibody (ab131111) at 1/500 dilution

Lane 1 : MCF7 cell extracts, untreated

Lane 2 : MCF7 cell extracts, treated with EGF

Predicted band size: 66 kDa

Incubate membrane with diluted antibody in 5% non-fat milk, 1 x TBS, 0.1% Tween20 at 4°C overnight with shaking.



Immunocytochemistry/ Immunofluorescence - Anti-Estrogen Receptor alpha (phospho S106) antibody (ab131111)

Immunocytochemistry/ Immunofluorescence analysis of methanol-fixed MCF cells labelling Estrogen Receptor alpha (phospho S106) with ab131111 at 1/100 dilution.

Please note: All products are "FOR RESEARCH USE ONLY. NOT FOR USE IN DIAGNOSTIC PROCEDURES"

Our Abpromise to you: Quality guaranteed and expert technical support

- Replacement or refund for products not performing as stated on the datasheet

- Valid for 12 months from date of delivery
- Response to your inquiry within 24 hours
- We provide support in Chinese, English, French, German, Japanese and Spanish
- Extensive multi-media technical resources to help you
- We investigate all quality concerns to ensure our products perform to the highest standards

If the product does not perform as described on this datasheet, we will offer a refund or replacement. For full details of the Abpromise, please visit <https://www.abcam.com/abpromise> or contact our technical team.

Terms and conditions

- Guarantee only valid for products bought direct from Abcam or one of our authorized distributors