

Product datasheet

Anti-Estrogen Receptor alpha (phospho S167) antibody ab131105

3 Images

Overview

Product name	Anti-Estrogen Receptor alpha (phospho S167) antibody
Description	Rabbit polyclonal to Estrogen Receptor alpha (phospho S167)
Host species	Rabbit
Tested applications	Suitable for: WB, IHC-P, ICC/IF
Species reactivity	Reacts with: Human
Immunogen	Synthetic peptide within Human Estrogen Receptor alpha (phospho S167) conjugated to Keyhole Limpet Haemocyanin (KLH). The exact sequence is proprietary. Sequence: LAS(p)TN

Database link: [P03372](#)

 [Run BLAST with](#)

 [Run BLAST with](#)

Positive control MCF7 cell extract; MCF cells; Human breast carcinoma tissue

General notes

The Life Science industry has been in the grips of a reproducibility crisis for a number of years. Abcam is leading the way in addressing this with our range of recombinant monoclonal antibodies and knockout edited cell lines for gold-standard validation. Please check that this product meets your needs before purchasing.

If you have any questions, special requirements or concerns, please send us an inquiry and/or contact our Support team ahead of purchase. Recommended alternatives for this product can be found below, along with publications, customer reviews and Q&As

Properties

Form	Liquid
Storage instructions	Shipped at 4°C. Store at -20°C. Stable for 12 months at -20°C.
Storage buffer	pH: 7.40 Preservative: 0.02% Sodium azide Constituents: 49% PBS, 0.88% Sodium chloride, 50% Glycerol (glycerin, glycerine) PBS is without Mg ²⁺ and Ca ²⁺

Purity	Immunogen affinity purified
Purification notes	ab131105 was purified by affinity-chromatography using epitope-specific phosphopeptide. Non-phospho specific antibodies were removed by chromatography using non-phosphopeptide.
Clonality	Polyclonal
Isotype	IgG

Applications

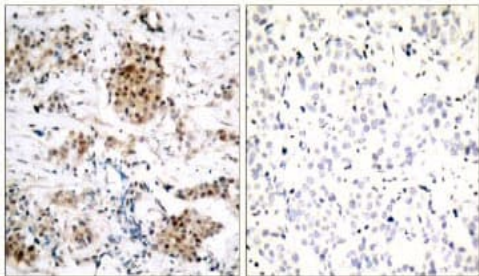
The Abpromise guarantee Our **Abpromise guarantee** covers the use of ab131105 in the following tested applications. The application notes include recommended starting dilutions; optimal dilutions/concentrations should be determined by the end user.

Application	Abreviews	Notes
WB		1/500 - 1/1000. Predicted molecular weight: 66 kDa.
IHC-P		1/50 - 1/100.
ICC/IF		1/100 - 1/200.

Target

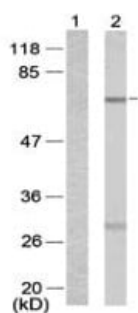
Function	Nuclear hormone receptor. The steroid hormones and their receptors are involved in the regulation of eukaryotic gene expression and affect cellular proliferation and differentiation in target tissues. Can activate the transcriptional activity of TFF1.
Sequence similarities	Belongs to the nuclear hormone receptor family. NR3 subfamily. Contains 1 nuclear receptor DNA-binding domain.
Domain	Composed of three domains: a modulating N-terminal domain, a DNA-binding domain and a C-terminal ligand-binding domain.
Post-translational modifications	Phosphorylated by cyclin A/CDK2. Phosphorylation probably enhances transcriptional activity. Glycosylated; contains N-acetylglucosamine, probably O-linked. Ubiquitinated. Deubiquitinated by OTUB1. Dimethylated by PRMT1 at Arg-260. The methylation may favor cytoplasmic localization. Palmitoylated (isoform 3). Not biotinylated (isoform 3).
Cellular localization	Nucleus. Cytoplasm. Cell membrane. A minor fraction is associated with the inner membrane and Nucleus. Cytoplasm. Cell membrane. Associated with the inner membrane via palmitoylation.

Images



Immunohistochemistry (Formalin/PFA-fixed paraffin-embedded sections) - Anti-Estrogen Receptor alpha (phospho S167) antibody (ab131105)

Immunohistochemical analysis of paraffin-embedded Human breast carcinoma tissue labelling Estrogen Receptor alpha (phospho S167) with ab131105 at 1/50 dilution. Right panel was preincubated with blocking peptide.



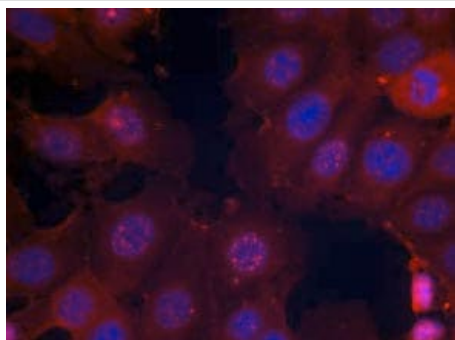
Western blot - Anti-Estrogen Receptor alpha (phospho S167) antibody (ab131105)

All lanes : Anti-Estrogen Receptor alpha (phospho S167) antibody (ab131105) at 1/500 dilution

Lane 1 : MCF7 cell extract with blocking peptide

Lane 2 : MCF7 cell extract

Predicted band size: 66 kDa



Immunocytochemistry/ Immunofluorescence - Anti-Estrogen Receptor alpha (phospho S167) antibody (ab131105)

Immunofluorescence analysis of methanol-fixed MCF cells labelling Estrogen Receptor alpha (phospho S167) with ab131105 at 1/100 dilution.

Our Abpromise to you: Quality guaranteed and expert technical support

- Replacement or refund for products not performing as stated on the datasheet
- Valid for 12 months from date of delivery
- Response to your inquiry within 24 hours

- We provide support in Chinese, English, French, German, Japanese and Spanish
- Extensive multi-media technical resources to help you
- We investigate all quality concerns to ensure our products perform to the highest standards

If the product does not perform as described on this datasheet, we will offer a refund or replacement. For full details of the Abpromise, please visit <https://www.abcam.com/abpromise> or contact our technical team.

Terms and conditions

- Guarantee only valid for products bought direct from Abcam or one of our authorized distributors