


Anti-ETFB antibody ab240593

[1 References](#) [2 Images](#)

Overview

Product name	Anti-ETFB antibody
Description	Rabbit polyclonal to ETFB
Host species	Rabbit
Tested applications	Suitable for: WB, IP
Species reactivity	Reacts with: Mouse, Human Predicted to work with: Cow, Orangutan 
Immunogen	Synthetic peptide within Human ETFB aa 205-255. The exact sequence is proprietary. Database link: P38117
Positive control	WB: HeLa, HEK-293T, Jurkat, TMCK-1 and NIH/3T3 whole cell lysate. IP: HEK-293T whole cell lysate.
General notes	<p>The Life Science industry has been in the grips of a reproducibility crisis for a number of years. Abcam is leading the way in addressing this with our range of recombinant monoclonal antibodies and knockout edited cell lines for gold-standard validation. Please check that this product meets your needs before purchasing.</p> <p>If you have any questions, special requirements or concerns, please send us an inquiry and/or contact our Support team ahead of purchase. Recommended alternatives for this product can be found below, along with publications, customer reviews and Q&As</p>

Properties

Form	Liquid
Storage instructions	Shipped at 4°C. Store at +4°C short term (1-2 weeks). Upon delivery aliquot. Store at -20°C long term. Avoid freeze / thaw cycle.
Storage buffer	pH: 7 Preservative: 0.09% Sodium azide Constituent: Tris citrate/phosphate
Purity	Affinity purified
Clonality	Polyclonal
Isotype	IgG

Applications

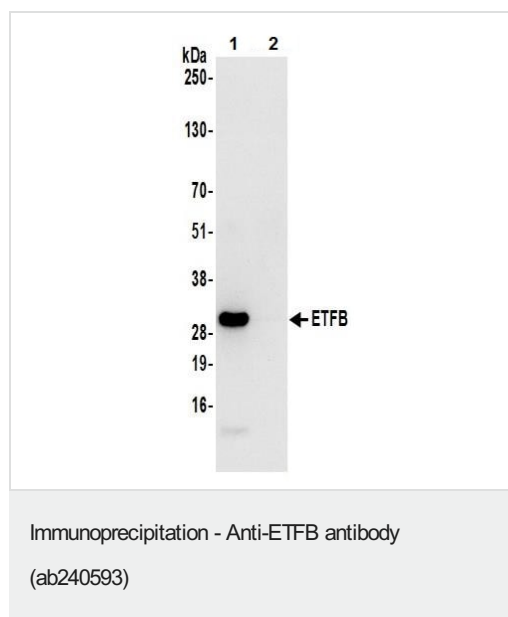
The Abpromise guarantee Our **Abpromise guarantee** covers the use of ab240593 in the following tested applications. The application notes include recommended starting dilutions; optimal dilutions/concentrations should be determined by the end user.

Application	Abreviews	Notes
WB		1/1000 - 1/5000.
IP		Use at 2-10 µg/mg of lysate.

Target

Function	The electron transfer flavoprotein serves as a specific electron acceptor for several dehydrogenases, including five acyl-CoA dehydrogenases, glutaryl-CoA and sarcosine dehydrogenase. It transfers the electrons to the main mitochondrial respiratory chain via ETF-ubiquinone oxidoreductase (ETF dehydrogenase).
Tissue specificity	Abundant in liver, heart and skeletal muscle. A weak expression is seen in the brain, placenta, lung, kidney and pancreas.
Involvement in disease	Glutaric aciduria 2B
Sequence similarities	Belongs to the ETF beta-subunit/FixA family.
Domain	The recognition loop recognizes a hydrophobic patch at the surface of interacting dehydrogenases and acts as a static anchor at the interface.
Post-translational modifications	Methylated. Trimethylation at Lys-200 and Lys-203 may negatively regulate the activity in electron transfer from Acyl-CoA dehydrogenases.
Cellular localization	Mitochondrion matrix.

Images

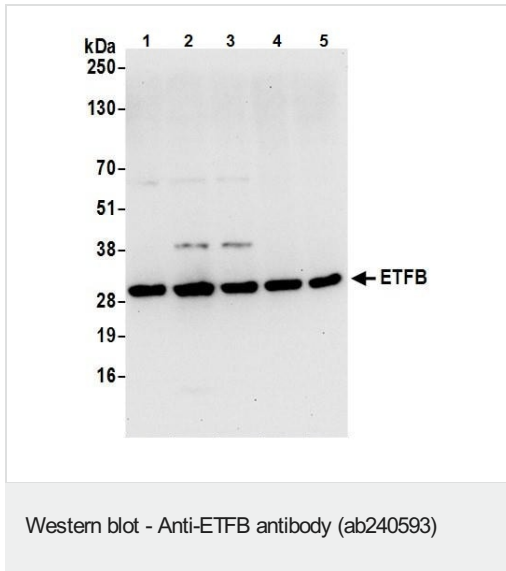


ETFb was immunoprecipitated from 1 mg HEK-293T (human epithelial cell line from embryonic kidney transformed with large T antigen) whole cell lysate prepared using NETN lysis buffer with ab240593 at 6 µg per reaction. Western blot was performed from the immunoprecipitate using ab240593 at 0.4 µg/mL.

Lane 1: ab240593 IP in HEK-293T whole cell lysate.

Lane 2: Control IgG (-).

Detection: Chemiluminescence with an exposure time of 10 seconds.



All lanes : Anti-ETFB antibody (ab240593) at 0.1 µg/ml

Lane 1 : HeLa (human epithelial cell line from cervix adenocarcinoma) whole cell lysate

Lane 2 : HEK-293T (human epithelial cell line from embryonic kidney transformed with large T antigen) whole cell lysate

Lane 3 : Jurkat (human T cell leukemia cell line from peripheral blood) whole cell lysate

Lane 4 : TCMK-1 (mouse kidney epithelial cell line) whole cell lysate

Lane 5 : NIH/3T3 (mouse embryo fibroblast cell line) whole cell lysate

Lysates/proteins at 50 µg per lane.

Detection: Chemiluminescence with an exposure time of 10 seconds.

Please note: All products are "FOR RESEARCH USE ONLY. NOT FOR USE IN DIAGNOSTIC PROCEDURES"

Our Abpromise to you: Quality guaranteed and expert technical support

- Replacement or refund for products not performing as stated on the datasheet
- Valid for 12 months from date of delivery
- Response to your inquiry within 24 hours
- We provide support in Chinese, English, French, German, Japanese and Spanish
- Extensive multi-media technical resources to help you
- We investigate all quality concerns to ensure our products perform to the highest standards

If the product does not perform as described on this datasheet, we will offer a refund or replacement. For full details of the Abpromise, please visit <https://www.abcam.com/abpromise> or contact our technical team.

Terms and conditions

- Guarantee only valid for products bought direct from Abcam or one of our authorized distributors