

Product datasheet

Anti-ETFDH antibody - C-terminal ab224663

★★★★☆ [1 Abreviews](#) [4 Images](#)

Overview

Product name	Anti-ETFDH antibody - C-terminal
Description	Rabbit polyclonal to ETFDH - C-terminal
Host species	Rabbit
Tested applications	Suitable for: WB, IHC-P, ICC/IF
Species reactivity	Reacts with: Mouse, Human
Immunogen	Recombinant fragment corresponding to Human ETFDH aa 300 to the C-terminus (C terminal). Database link: Q16134

 [Run BLAST with](#)

 [Run BLAST with](#)

Positive control WB: Mouse liver and kidney tissue lysates; HEK-293T whole cell lysate. IHC-P: Human kidney and small intestine tissues. ICC/IF: PC-3 cells.

General notes

The Life Science industry has been in the grips of a reproducibility crisis for a number of years. Abcam is leading the way in addressing this with our range of recombinant monoclonal antibodies and knockout edited cell lines for gold-standard validation. Please check that this product meets your needs before purchasing.

If you have any questions, special requirements or concerns, please send us an inquiry and/or contact our Support team ahead of purchase. Recommended alternatives for this product can be found below, along with publications, customer reviews and Q&As

Properties

Form	Liquid
Storage instructions	Shipped at 4°C. Store at +4°C short term (1-2 weeks). Upon delivery aliquot. Store at -20°C long term. Avoid freeze / thaw cycle.
Storage buffer	pH: 7.30 Preservative: 0.02% Sodium azide Constituents: 50% Glycerol (glycerin, glycerine), PBS
Purity	Immunogen affinity purified
Clonality	Polyclonal
Isotype	IgG

Applications

The Abpromise guarantee

Our **Abpromise guarantee** covers the use of ab224663 in the following tested applications.

The application notes include recommended starting dilutions; optimal dilutions/concentrations should be determined by the end user.

Application	Abreviews	Notes
WB	★★★★☆ (1)	1/500 - 1/2000. Detects a band of approximately 68 kDa (predicted molecular weight: 63,69 kDa).
IHC-P		1/20 - 1/200.
ICC/IF		1/50 - 1/200.

Target

Function

Accepts electrons from ETF and reduces ubiquinone.

Involvement in disease

Defects in ETFDH are the cause of glutaric aciduria type 2C (GA2C) [MIM:231680]. GA2C is an autosomal recessively inherited disorder of fatty acid, amino acid, and choline metabolism. It is characterized by multiple acyl-CoA dehydrogenase deficiencies resulting in large excretion not only of glutaric acid, but also of lactic, ethylmalonic, butyric, isobutyric, 2-methyl-butyrac, and isovaleric acids.

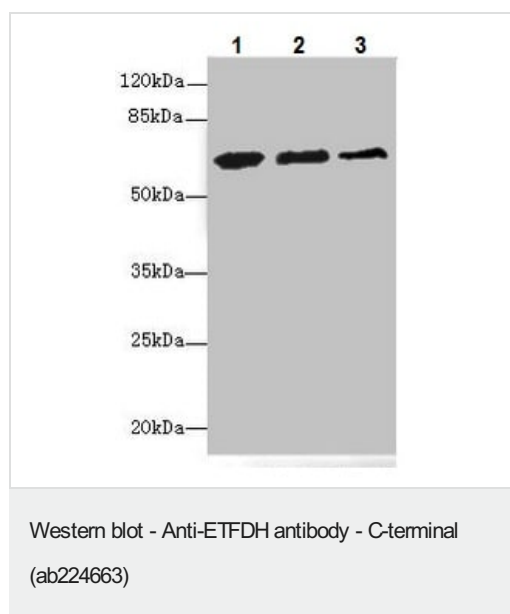
Sequence similarities

Belongs to the ETF-QO/fixC family.
Contains 1 4Fe-4S ferredoxin-type domain.

Cellular localization

Mitochondrion inner membrane.

Images



All lanes : Anti-ETFDH antibody - C-terminal (ab224663) at 1/500 dilution

Lane 1 : Mouse liver tissue lysate

Lane 2 : Mouse kidney tissue lysate

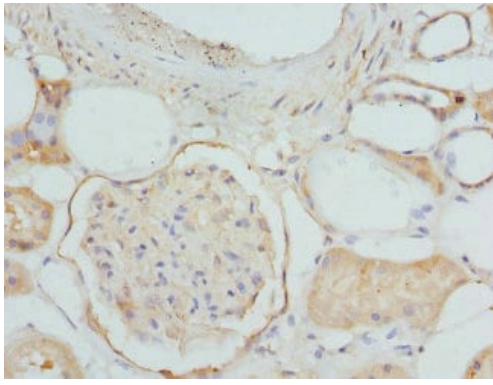
Lane 3 : HEK-293T (human epithelial cell line from embryonic kidney transformed with large T antigen) whole cell lysate

Secondary

All lanes : Goat polyclonal to Rabbit IgG at 1/10000 dilution

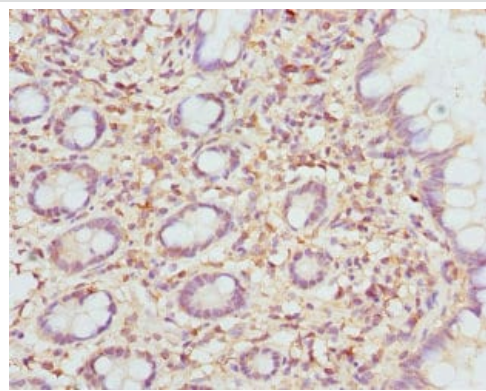
Predicted band size: 63,69 kDa

Observed band size: 68 kDa



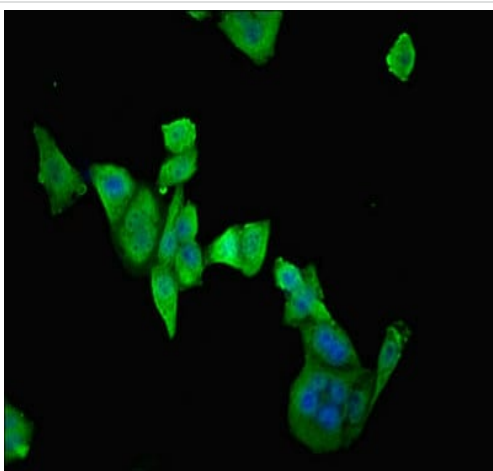
Paraffin-embedded human kidney tissue stained for ETFDH using ab224663 at 1/100 dilution in immunohistochemical analysis.

Immunohistochemistry (Formalin/PFA-fixed paraffin-embedded sections) - Anti-ETFDH antibody - C-terminal (ab224663)



Paraffin-embedded human small intestine tissue stained for ETFDH using ab224663 at 1/100 dilution in immunohistochemical analysis.

Immunohistochemistry (Formalin/PFA-fixed paraffin-embedded sections) - Anti-ETFDH antibody - C-terminal (ab224663)



PC-3 (human prostate adenocarcinoma cell line) cells stained for ETFDH (green) using ab224663 at 1/100 dilution in ICC/IF, followed by Alexa Fluor 488[®] conjugated Goat Anti-Rabbit IgG (H+L).

Immunocytochemistry/ Immunofluorescence - Anti-ETFDH antibody - C-terminal (ab224663)

Please note: All products are "FOR RESEARCH USE ONLY. NOT FOR USE IN DIAGNOSTIC PROCEDURES"

Our Abpromise to you: Quality guaranteed and expert technical support

- Replacement or refund for products not performing as stated on the datasheet
- Valid for 12 months from date of delivery
- Response to your inquiry within 24 hours

- We provide support in Chinese, English, French, German, Japanese and Spanish
- Extensive multi-media technical resources to help you
- We investigate all quality concerns to ensure our products perform to the highest standards

If the product does not perform as described on this datasheet, we will offer a refund or replacement. For full details of the Abpromise, please visit <https://www.abcam.com/abpromise> or contact our technical team.

Terms and conditions

- Guarantee only valid for products bought direct from Abcam or one of our authorized distributors