


Anti-ETHE1 antibody [EPR11697] - BSA and Azide free ab249805

Recombinant RabMAb

4 Images

Overview

Product name	Anti-ETHE1 antibody [EPR11697] - BSA and Azide free
Description	Rabbit monoclonal [EPR11697] to ETHE1 - BSA and Azide free
Host species	Rabbit
Tested applications	Suitable for: IHC-P, WB Unsuitable for: Flow Cyt, ICC/IF or IP
Species reactivity	Reacts with: Human Predicted to work with: Mouse, Rat 
Immunogen	Synthetic peptide. This information is proprietary to Abcam and/or its suppliers.
General notes	<p>ab249805 is the carrier-free version of ab174302.</p> <p>Our carrier-free antibodies are typically supplied in a PBS-only formulation, purified and free of BSA, sodium azide and glycerol. The carrier-free buffer and high concentration allow for increased conjugation efficiency.</p> <p>This conjugation-ready format is designed for use with fluorochromes, metal isotopes, oligonucleotides, and enzymes, which makes them ideal for antibody labelling, functional and cell-based assays, flow-based assays (e.g. mass cytometry) and Multiplex Imaging applications.</p> <p>Use our conjugation kits for antibody conjugates that are ready-to-use in as little as 20 minutes with <1 minute hands-on-time and 100% antibody recovery: available for fluorescent dyes, HRP, biotin and gold.</p> <p>This product is compatible with the Maxpar[®] Antibody Labeling Kit from Fluidigm, without the need for antibody preparation. Maxpar[®] is a trademark of Fluidigm Canada Inc.</p> <p>This product is a recombinant monoclonal antibody, which offers several advantages including:</p> <ul style="list-style-type: none"> - High batch-to-batch consistency and reproducibility - Improved sensitivity and specificity - Long-term security of supply - Animal-free production <p>For more information see here.</p> <p>Our RabMAb[®] technology is a patented hybridoma-based technology for making rabbit monoclonal antibodies. For details on our patents, please refer to RabMAb[®] patents.</p>

Properties

Form	Liquid
Storage instructions	Shipped at 4°C. Store at +4°C. Do Not Freeze.
Storage buffer	pH: 7.2 Constituent: PBS
Carrier free	Yes
Purity	Affinity purified
Clonality	Monoclonal
Clone number	EPR11697
Isotype	IgG

Applications

The Abpromise guarantee Our **Abpromise guarantee** covers the use of ab249805 in the following tested applications. The application notes include recommended starting dilutions; optimal dilutions/concentrations should be determined by the end user.

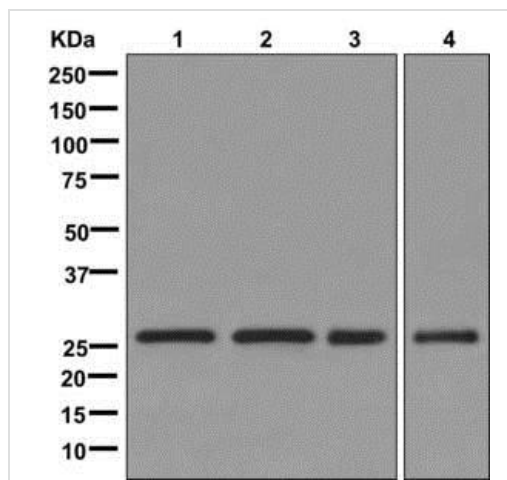
Application	Abreviews	Notes
IHC-P		Use at an assay dependent concentration. Perform heat mediated antigen retrieval with citrate buffer pH 6 before commencing with IHC staining protocol.
WB		Use at an assay dependent concentration. Predicted molecular weight: 28 kDa.

Application notes Is unsuitable for Flow Cyt, ICC/IF or IP.

Target

Function	Probably plays an important role in metabolic homeostasis in mitochondria. May function as a nuclear-cytoplasmic shuttling protein that binds transcription factor RELA/NFkB3 in the nucleus and exports it to the cytoplasm. Suppresses p53-induced apoptosis by preventing nuclear localization of RELA.
Tissue specificity	Ubiquitously expressed.
Involvement in disease	Defects in ETHE1 are a cause of ethylmalonic encephalopathy (EE) [MIM:602473]. EE is an autosomal recessive disorder characterized by neurodevelopmental delay and regression, recurrent petechiae, acrocyanosis, diarrhea, leading to death in the first decade of life. It is also associated with persistent lactic acidemia and ethylmalonic and methylsuccinic aciduria.
Sequence similarities	Belongs to the metallo-beta-lactamase superfamily. Glyoxalase II family.
Cellular localization	Cytoplasm. Nucleus. Mitochondrion matrix. According to PubMed:12398897, it is cytoplasmic and nuclear. According to PubMed:14732903, it is found in the mitochondrial matrix.

Images



Western blot - Anti-ETHE1 antibody [EPR11697] - BSA and Azide free (ab249805)

All lanes : Anti-HPS1 antibody [EP8429(2)] ([ab174301](#)) at 1/1000 dilution

Lane 1 : HepG2 cell lysate

Lane 2 : HeLa cell lysate

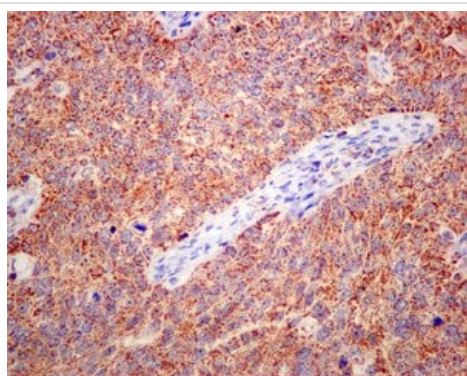
Lane 3 : SW480 cell lysate

Lane 4 : Jurkat cell lysate

Lysates/proteins at 10 µg per lane.

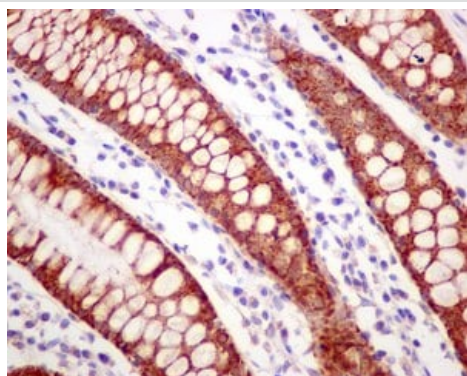
Predicted band size: 28 kDa

This data was developed using [ab174302](#), the same antibody clone in a different buffer formulation.



Immunohistochemistry (Formalin/PFA-fixed paraffin-embedded sections) - Anti-ETHE1 antibody [EPR11697] - BSA and Azide free (ab249805)

This data was developed using [ab174302](#), the same antibody clone in a different buffer formulation. Immunohistochemical analysis of paraffin-embedded cervical carcinoma tissue labeling ETHE1 with [ab174302](#) at 1/100 dilution. Perform heat mediated antigen retrieval with citrate buffer pH 6 before commencing with IHC staining protocol.



Immunohistochemistry (Formalin/PFA-fixed paraffin-embedded sections) - Anti-ETHE1 antibody [EPR11697] - BSA and Azide free (ab249805)

This data was developed using [ab174302](#), the same antibody clone in a different buffer formulation. Immunohistochemical analysis of paraffin-embedded colon tissue labeling ETHE1 with [ab174302](#) at 1/100 dilution. Perform heat mediated antigen retrieval with citrate buffer pH 6 before commencing with IHC staining protocol.

Why choose a recombinant antibody?



Research with confidence
Consistent and reproducible results



Long-term and scalable supply
Recombinant technology



Success from the first experiment
Confirmed specificity



Ethical standards compliant
Animal-free production

Anti-ETHE1 antibody [EPR11697] - BSA and Azide free (ab249805)

Please note: All products are "FOR RESEARCH USE ONLY. NOT FOR USE IN DIAGNOSTIC PROCEDURES"

Our Abpromise to you: Quality guaranteed and expert technical support

- Replacement or refund for products not performing as stated on the datasheet
- Valid for 12 months from date of delivery
- Response to your inquiry within 24 hours
- We provide support in Chinese, English, French, German, Japanese and Spanish
- Extensive multi-media technical resources to help you
- We investigate all quality concerns to ensure our products perform to the highest standards

If the product does not perform as described on this datasheet, we will offer a refund or replacement. For full details of the Abpromise, please visit <https://www.abcam.com/abpromise> or contact our technical team.

Terms and conditions

- Guarantee only valid for products bought direct from Abcam or one of our authorized distributors