


## Product datasheet

# Anti-ETS1 antibody ab225868

[4 References](#) [2 Images](#)

### Overview

---

<b>Product name</b>	Anti-ETS1 antibody
<b>Description</b>	Rabbit polyclonal to ETS1
<b>Host species</b>	Rabbit
<b>Tested applications</b>	<b>Suitable for:</b> WB, IP
<b>Species reactivity</b>	<b>Reacts with:</b> Human <b>Predicted to work with:</b> Mouse, Rat, Rabbit, Goat, Horse, Chicken, Guinea pig, Cow, Dog, Chimpanzee, Cynomolgus monkey, Rhesus monkey, Gorilla, Orangutan 
<b>Immunogen</b>	Synthetic peptide within Human ETS1 aa 391-441. The exact sequence is proprietary. (NP_005229.1). Database link: <a href="#">P14921</a>
<b>Positive control</b>	WB: Jurkat whole cell lysate. IP: Jurkat whole cell lysate.
<b>General notes</b>	<p>The Life Science industry has been in the grips of a reproducibility crisis for a number of years. Abcam is leading the way in addressing this with our range of recombinant monoclonal antibodies and knockout edited cell lines for gold-standard validation. Please check that this product meets your needs before purchasing.</p> <p>If you have any questions, special requirements or concerns, please send us an inquiry and/or contact our Support team ahead of purchase. Recommended alternatives for this product can be found below, along with publications, customer reviews and Q&amp;As</p>

### Properties

---

<b>Form</b>	Liquid
<b>Storage instructions</b>	Shipped at 4°C. Store at +4°C short term (1-2 weeks). Upon delivery aliquot. Store at -20°C long term. Avoid freeze / thaw cycle.
<b>Storage buffer</b>	pH: 7 Preservative: 0.09% Sodium azide Constituent: Tris citrate/phosphate
<b>Purity</b>	pH 7-8 Immunogen affinity purified
<b>Clonality</b>	Polyclonal

Isotype

IgG

## Applications

### The Abpromise guarantee

Our **Abpromise guarantee** covers the use of ab225868 in the following tested applications.

The application notes include recommended starting dilutions; optimal dilutions/concentrations should be determined by the end user.

Application	Abreviews	Notes
WB		1/2000 - 1/10000. Predicted molecular weight: 50 kDa.
IP		Use at 2-10 µg/mg of lysate.

## Target

### Function

Transcription factor.

### Sequence similarities

Belongs to the ETS family.  
Contains 1 ETS DNA-binding domain.  
Contains 1 PNT (pointed) domain.

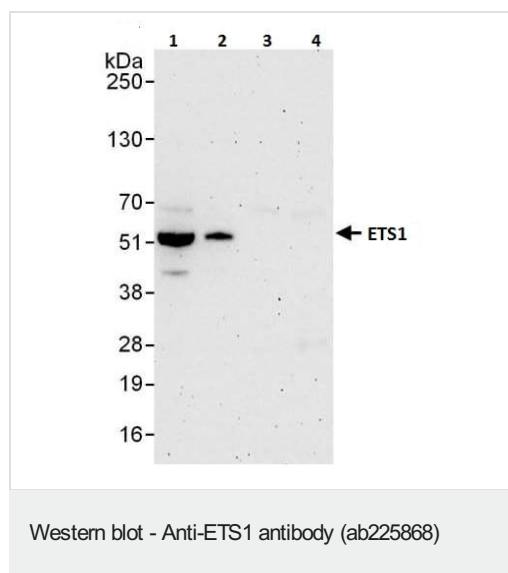
### Post-translational modifications

Sumoylated on Lys-15 and Lys-227, preferentially by SUMO2; which inhibits transcriptional activity.  
Ubiquitinated; which induces proteasomal degradation.

### Cellular localization

Nucleus.

## Images



**All lanes :** Anti-ETS1 antibody (ab225868) at 0.1 µg/ml

**Lane 1 :** Jurkat (human T cell leukemia cell line from peripheral blood) whole cell lysate at 50 µg

**Lane 2 :** Jurkat whole cell lysate at 15 µg

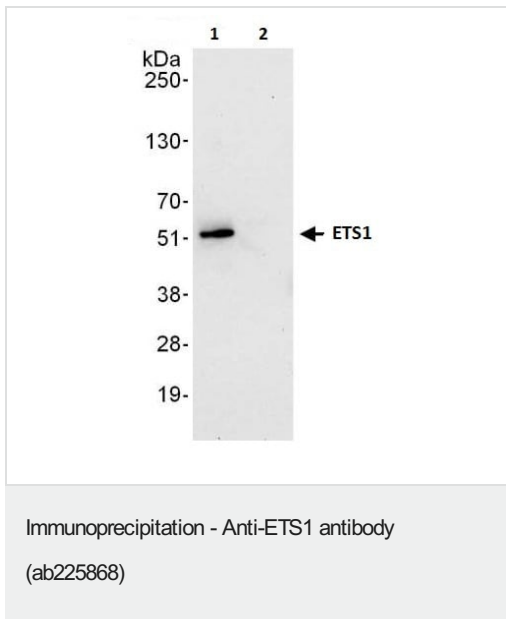
**Lane 3 :** HEK-293T (human epithelial cell line from embryonic kidney transformed with large T antigen) whole cell lysate at 50 µg

**Lane 4 :** HeLa (human epithelial cell line from cervix adenocarcinoma) whole cell lysate at 50 µg

Developed using the ECL technique.

**Predicted band size:** 50 kDa

**Exposure time:** 3 minutes



ETS1 was immunoprecipitated from Jurkat (human T cell leukemia cell line from peripheral blood) whole cell lysate (1 mg for IP, 20% of IP loaded) with ab225868 at 6 µg/mg lysate. Western blot was performed from the immunoprecipitate using ab225868 at 1 µg/ml.

Lane 1: ab225868 IP in Jurkat whole cell lysate.

Lane 2: Control IgG IP in Jurkat whole cell lysate.

Detection: Chemiluminescence with exposure time of 30 seconds.

**Please note:** All products are "FOR RESEARCH USE ONLY. NOT FOR USE IN DIAGNOSTIC PROCEDURES"

### Our Abpromise to you: Quality guaranteed and expert technical support

---

- Replacement or refund for products not performing as stated on the datasheet
- Valid for 12 months from date of delivery
- Response to your inquiry within 24 hours
- We provide support in Chinese, English, French, German, Japanese and Spanish
- Extensive multi-media technical resources to help you
- We investigate all quality concerns to ensure our products perform to the highest standards

If the product does not perform as described on this datasheet, we will offer a refund or replacement. For full details of the Abpromise, please visit <https://www.abcam.com/abpromise> or contact our technical team.

### Terms and conditions

---

- Guarantee only valid for products bought direct from Abcam or one of our authorized distributors