


## Product datasheet

### Anti-ETS1 antibody [mAbcam63302] ab63302

★★★★★ [1 Abreviews](#) [1 Image](#)

#### Overview

<b>Product name</b>	Anti-ETS1 antibody [mAbcam63302]
<b>Description</b>	Mouse monoclonal [mAbcam63302] to ETS1
<b>Host species</b>	Mouse
<b>Tested applications</b>	<b>Suitable for:</b> WB
<b>Species reactivity</b>	<b>Reacts with:</b> Human <b>Predicted to work with:</b> Mouse, Rat, Rabbit, Chicken, Cow, Pig 
<b>Immunogen</b>	Recombinant fragment corresponding to Human ETS1 aa 100-250. (Peptide available as <a href="#">ab101223</a> )
<b>Positive control</b>	This antibody gave a positive signal in the following human lysates: HepG2 Nuclear; Jurkat Nuclear; HeLa Nuclear; MCF7 Whole Cell.
<b>General notes</b>	<p>This antibody clone is manufactured by Abcam. If you require a custom buffer formulation or conjugation for your experiments, please contact <a href="mailto:orders@abcam.com">orders@abcam.com</a>.</p> <p>The Life Science industry has been in the grips of a reproducibility crisis for a number of years. Abcam is leading the way in addressing this with our range of recombinant monoclonal antibodies and knockout edited cell lines for gold-standard validation. Please check that this product meets your needs before purchasing.</p> <p>If you have any questions, special requirements or concerns, please send us an inquiry and/or contact our Support team ahead of purchase. Recommended alternatives for this product can be found below, along with publications, customer reviews and Q&amp;As</p>

#### Properties

<b>Form</b>	Liquid
<b>Storage instructions</b>	Shipped at 4°C. Store at +4°C short term (1-2 weeks). Store at -20°C long term.
<b>Storage buffer</b>	pH: 7.40 Preservative: 0.02% Sodium azide Constituents: PBS, 6.97% L-Arginine  Buffer: 1x PBS
<b>Purity</b>	IgG fraction

<b>Clonality</b>	Monoclonal
<b>Clone number</b>	mAbcam63302
<b>Myeloma</b>	Sp2/0-Ag14
<b>Isotype</b>	IgG

## Applications

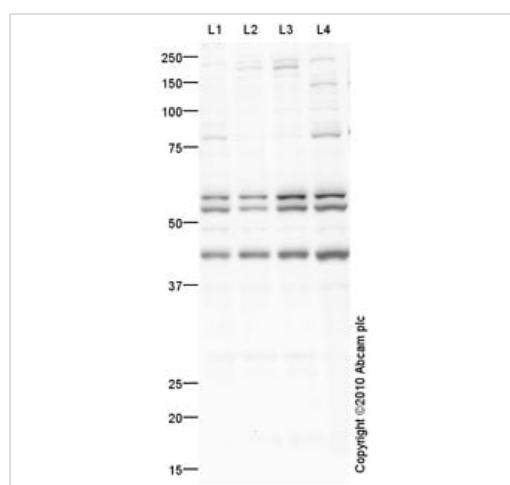
**The Abpromise guarantee** Our **Abpromise guarantee** covers the use of ab63302 in the following tested applications. The application notes include recommended starting dilutions; optimal dilutions/concentrations should be determined by the end user.

Application	Abreviews	Notes
<b>WB</b>	★★★★★ (1)	Use a concentration of 10 µg/ml. Detects a band of approximately 55 kDa (predicted molecular weight: 50 kDa).

## Target

<b>Function</b>	Transcription factor.
<b>Sequence similarities</b>	Belongs to the ETS family. Contains 1 ETS DNA-binding domain. Contains 1 PNT (pointed) domain.
<b>Post-translational modifications</b>	Sumoylated on Lys-15 and Lys-227, preferentially by SUMO2; which inhibits transcriptional activity. Ubiquitinated; which induces proteasomal degradation.
<b>Cellular localization</b>	Nucleus.

## Images



Western blot - Anti-ETS1 antibody [mAbcam63302] (ab63302)

**All lanes** : Anti-ETS1 antibody [mAbcam63302] (ab63302) at 10 µg/ml

**Lane 1** : HepG2 (Human hepatocellular liver carcinoma cell line) Nuclear Lysate

**Lane 2** : Jurkat nuclear extract lysate ([ab14844](#))

**Lane 3** : HeLa (Human epithelial carcinoma cell line) Nuclear Lysate

**Lane 4** : MCF7 (Human breast adenocarcinoma cell line) Whole Cell Lysate

Lysates/proteins at 10 µg per lane.

### Secondary

**All lanes** : Goat Anti-Mouse IgG H&L (HRP) preadsorbed

(**ab97040**) at 1/5000 dilution

Developed using the ECL technique.

Performed under reducing conditions.

**Predicted band size:** 50 kDa

**Observed band size:** 55,60 kDa

**Additional bands at:** 45 kDa (possible isoform)

**Exposure time:** 2 minutes

Ab63302 is predicted to react with both isoforms of ETS1. c-ETS-1A has a predicted molecular weight of 50-kDa, whereas c-ETS-1B has a predicted molecular weight of 41-kDa. The ETS1 protein sequence contains several phosphorylation sites (Swissprot), which might explain the banding pattern observed.

**Please note:** All products are "FOR RESEARCH USE ONLY. NOT FOR USE IN DIAGNOSTIC PROCEDURES"

### Our Abpromise to you: Quality guaranteed and expert technical support

---

- Replacement or refund for products not performing as stated on the datasheet
- Valid for 12 months from date of delivery
- Response to your inquiry within 24 hours
- We provide support in Chinese, English, French, German, Japanese and Spanish
- Extensive multi-media technical resources to help you
- We investigate all quality concerns to ensure our products perform to the highest standards

If the product does not perform as described on this datasheet, we will offer a refund or replacement. For full details of the Abpromise, please visit <https://www.abcam.com/abpromise> or contact our technical team.

### Terms and conditions

---

- Guarantee only valid for products bought direct from Abcam or one of our authorized distributors