

## Product datasheet

# Anti-ETS2 antibody [EPR22419] ab219948

Recombinant RabMAb

[2 References](#) [9 Images](#)

### Overview

<b>Product name</b>	Anti-ETS2 antibody [EPR22419]
<b>Description</b>	Rabbit monoclonal [EPR22419] to ETS2
<b>Host species</b>	Rabbit
<b>Specificity</b>	This antibody is not recommended for human in IHC.
<b>Tested applications</b>	<b>Suitable for:</b> WB, IHC-P, ICC/IF, IP <b>Unsuitable for:</b> Flow Cyt
<b>Species reactivity</b>	<b>Reacts with:</b> Mouse, Rat, Human
<b>Immunogen</b>	Recombinant fragment. This information is proprietary to Abcam and/or its suppliers.
<b>Positive control</b>	WB: LPS treated RAW 264.7 cell lysate; K562 whole cell lysate; Human thymus lysate. IHC-P: Mouse and rat thymus tissue. ICC/IF: LPS treated RAW 264.7 cells. IP: K562 whole cell lysate.
<b>General notes</b>	<p>This product is a recombinant monoclonal antibody, which offers several advantages including:</p> <ul style="list-style-type: none"><li>- High batch-to-batch consistency and reproducibility</li><li>- Improved sensitivity and specificity</li><li>- Long-term security of supply</li><li>- Animal-free production</li></ul> <p>For more information <a href="#">see here</a>.</p> <p>Our RabMAb<sup>®</sup> technology is a patented hybridoma-based technology for making rabbit monoclonal antibodies. For details on our patents, please refer to <a href="#">RabMAb<sup>®</sup> patents</a>.</p>

### Properties

<b>Form</b>	Liquid
<b>Storage instructions</b>	Shipped at 4°C. Store at +4°C short term (1-2 weeks). Upon delivery aliquot. Store at -20°C long term. Avoid freeze / thaw cycle.
<b>Storage buffer</b>	pH: 7.2 Preservative: 0.01% Sodium azide Constituents: PBS, 40% Glycerol (glycerin, glycerine), 0.05% BSA
<b>Purity</b>	Protein A purified
<b>Clonality</b>	Monoclonal

Clone number                   EPR22419  
Isotype                         IgG

## Applications

**The Abpromise guarantee**           Our **Abpromise guarantee** covers the use of ab219948 in the following tested applications.  
The application notes include recommended starting dilutions; optimal dilutions/concentrations should be determined by the end user.

Application	Abreviews	Notes
WB		1/1000. Detects a band of approximately 50-55 kDa (predicted molecular weight: 53 kDa).
IHC-P		1/500. Perform heat mediated antigen retrieval with Tris/EDTA buffer pH 9.0 before commencing with IHC staining protocol.
ICC/IF		1/500.
IP		1/30.

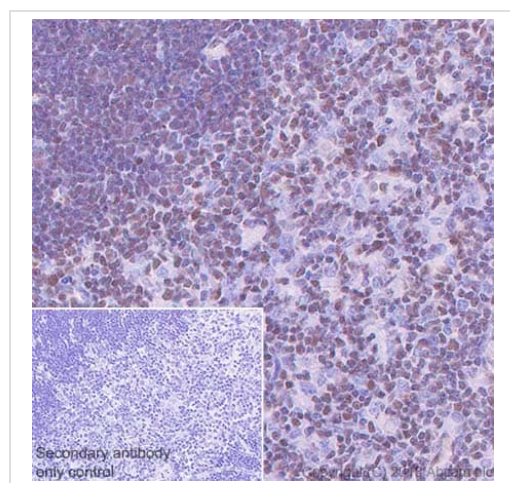
**Application notes**                    Is unsuitable for Flow Cyt.

## Target

**Sequence similarities**                Belongs to the ETS family.  
Contains 1 ETS DNA-binding domain.  
Contains 1 PNT (pointed) domain.

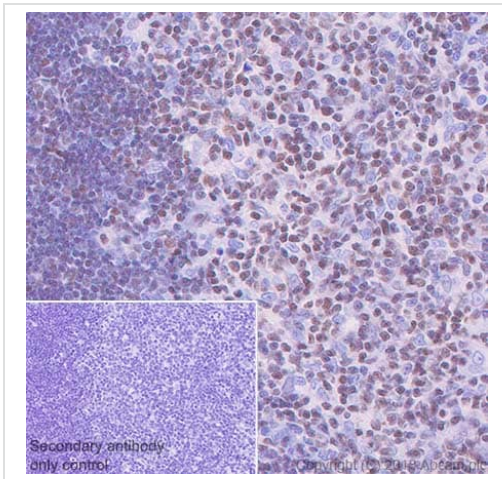
**Cellular localization**                Nucleus.

## Images



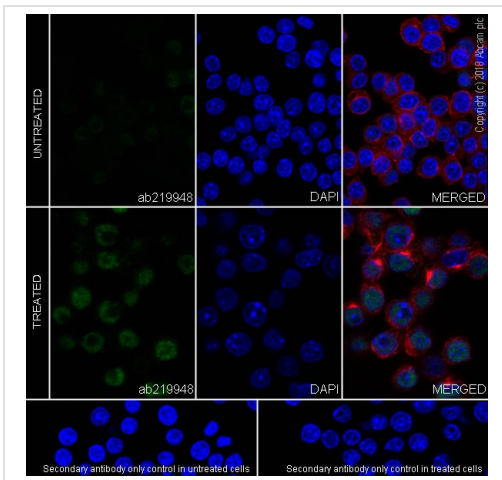
Immunohistochemical analysis of paraffin-embedded mouse thymus tissue labeling ETS2 with ab219948 at 1/500 dilution, followed by a ready to use Goat Anti-Rabbit IgG H&L (HRP). Nuclear staining on mouse thymus (PMID: 3472202, PMID:26926107) is observed. Counterstained with hematoxylin. Secondary antibody only control: Used PBS instead of primary antibody, secondary antibody is a ready to use Goat Anti-Rabbit IgG H&L (HRP). Perform heat mediated antigen retrieval using **ab93684** (Tris/EDTA buffer, pH 9.0).

Immunohistochemistry (Formalin/PFA-fixed paraffin-embedded sections) - Anti-ETS2 antibody  
[EPR22419] (ab219948)



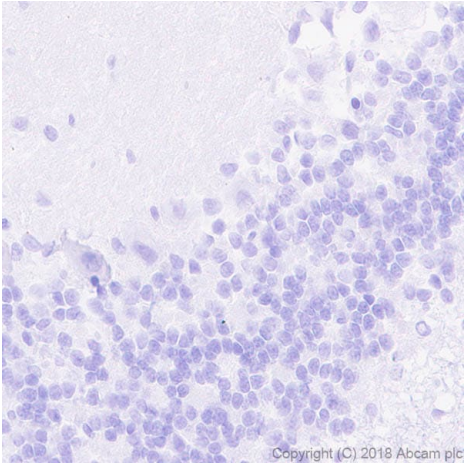
Immunohistochemistry (Formalin/PFA-fixed paraffin-embedded sections) - Anti-ETS2 antibody [EPR22419] (ab219948)

Immunohistochemical analysis of paraffin-embedded rat thymus tissue labeling ETS2 with ab219948 at 1/500 dilution, followed by a ready to use Goat Anti-Rabbit IgG H&L (HRP). Nuclear staining on rat thymus (PMID: 3472202, PMID:26926107) is observed. Counterstained with hematoxylin. Secondary antibody only control: Used PBS instead of primary antibody, secondary antibody is a ready to use Goat Anti-Rabbit IgG H&L (HRP). Perform heat mediated antigen retrieval using [ab93684](#) (Tris/EDTA buffer, pH 9.0).



Immunocytochemistry/ Immunofluorescence - Anti-ETS2 antibody [EPR22419] (ab219948)

Immunofluorescent analysis of 4% paraformaldehyde-fixed, 0.1% Triton X-100 permeabilized RAW 264.7 (mouse macrophage cell line transformed with Abelson murine leukemia virus) cells labeling ETS2 with ab219948 at 1/500 dilution, followed by Goat Anti-Rabbit IgG H&L (Alexa Fluor<sup>®</sup> 488) ([ab150077](#)) secondary antibody at 1/1000 dilution (green). Confocal image showing nuclear staining in RAW 264.7 cells treated with lipopolysaccharide (500 ng/ml) for 6 hours. The nuclear counterstain is DAPI (blue). Counterstained with [ab195889](#) Anti-alpha Tubulin antibody [DM1A] - Microtubule Marker (Alexa Fluor<sup>®</sup> 594) at a 1/200 dilution (red). Secondary antibody control: Used PBS instead of primary antibody, followed by Goat Anti-Rabbit IgG H&L (Alexa Fluor<sup>®</sup> 488) ([ab150077](#)) secondary antibody at 1/1000 dilution.

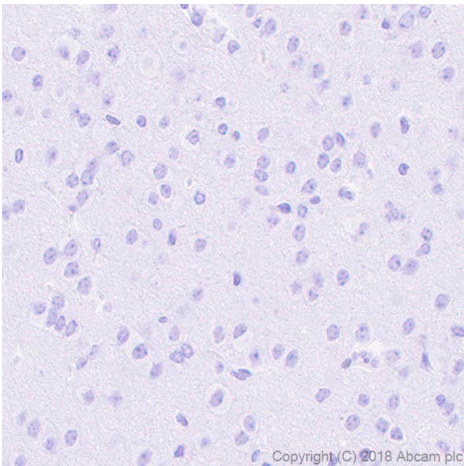


Immunohistochemistry (Formalin/PFA-fixed paraffin-embedded sections) - Anti-ETS2 antibody [EPR22419] (ab219948)

Immunohistochemical analysis of paraffin-embedded rat cerebellum tissue labeling ETS2 with ab219948 at 1/500 dilution, followed by a ready to use Goat Anti-Rabbit IgG H&L (HRP).

**Negative control:** No staining on rat cerebellum (PMID: 3472202) is observed. Counterstained with hematoxylin.

Perform heat mediated antigen retrieval using [ab93684](#) (Tris/EDTA buffer, pH 9.0).

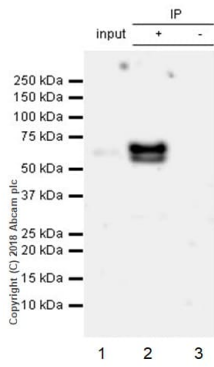


Immunohistochemistry (Formalin/PFA-fixed paraffin-embedded sections) - Anti-ETS2 antibody [EPR22419] (ab219948)

Immunohistochemical analysis of paraffin-embedded mouse cerebrum tissue labeling ETS2 with ab219948 at 1/500 dilution, followed by a ready to use Goat Anti-Rabbit IgG H&L (HRP).

**Negative control:** No staining on mouse cerebrum (PMID: 3472202) is observed. Counterstained with hematoxylin.

Perform heat mediated antigen retrieval using [ab93684](#) (Tris/EDTA buffer, pH 9.0).



Immunoprecipitation - Anti-ETS2 antibody [EPR22419] (ab219948)

ETS2 was immunoprecipitated from 0.35 mg K562 (human chronic myelogenous leukemia cell line from bone marrow ) whole cell lysate with ab219948 at 1/30 dilution. Western blot was performed from the immunoprecipitate using ab219948 at 1/1000 dilution. VeriBlot for IP Detection Reagent (HRP) ([ab131366](#)), was used for detection at 1/5000 dilution.

**Lane 1:** K562 whole cell lysate 10 µg (Input).

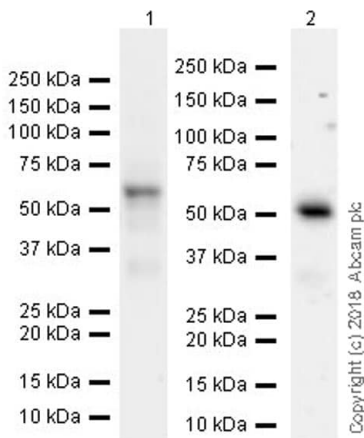
**Lane 2:** ab219948 IP in K562 whole cell lysate.

**Lane 3:** Rabbit monoclonal IgG ([ab172730](#)) instead of ab219948 in K562 whole cell lysate.

**Blocking/Dilution buffer:** 5% NFDm/TBST.

**Exposure time:** 3 minutes.

The two immunoprecipitated bands represent non-phosphorylated and phosphorylated ETS2.



Western blot - Anti-ETS2 antibody [EPR22419] (ab219948)

**All lanes :** Anti-ETS2 antibody [EPR22419] (ab219948) at 1/1000 dilution

**Lane 1 :** K-562 (human chronic myelogenous leukemia lymphoblast), whole cell lysate at 20 µg

**Lane 2 :** Human thymus at 10 µg

#### Secondary

**Lane 1 :** Goat Anti-Rabbit IgG H&L (HRP) ([ab97051](#)) at 1/100000 dilution

**Lane 2 :** VeriBlot for IP Detection Reagent (HRP) ([ab131366](#)) at 1/1000 dilution

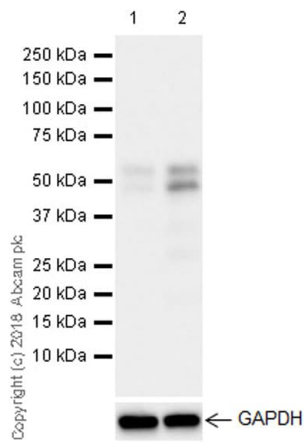
**Predicted band size:** 53 kDa

**Observed band size:** 53 kDa

**Blocking/Dilution buffer:** 5% NFDm/TBST.

**Exposure times:** Lane 1: 26 seconds, Lane 2: 3 minutes.

Lane 1 was developed using a higher sensitivity ECL substrate.



Western blot - Anti-ETS2 antibody [EPR22419] (ab219948)

**All lanes** : Anti-ETS2 antibody [EPR22419] (ab219948) at 1/1000 dilution

**Lane 1** : Untreated RAW 264.7 (mouse Abelson murine leukemia virus-induced tumor macrophage), whole cell lysate

**Lane 2** : RAW 264.7 treated with 500ng/ml lipopolysaccharides(LPS) for 6 hours

Lysates/proteins at 20 µg per lane.

#### Secondary

**All lanes** : Goat Anti-Rabbit IgG H&L (HRP) (**ab97051**) at 1/50000 dilution

**Predicted band size:** 53 kDa

**Observed band size:** 50-55 kDa

**Exposure time:** 5 seconds





**Blocking/Dilution buffer:** 5% NFDM/TBST.

The expression profile observed is consistent with what has been described in the literature (PMID: 15590657). The doublets represent ETS2 and its phosphorylated form.

This blot was developed using a higher sensitivity ECL substrate.



Why choose a recombinant antibody?

 <p><b>Research with confidence</b> Consistent and reproducible results</p>	 <p><b>Long-term and scalable supply</b> Recombinant technology</p>
 <p><b>Success from the first experiment</b> Confirmed specificity</p>	 <p><b>Ethical standards compliant</b> Animal-free production</p>

Anti-ETS2 antibody [EPR22419] (ab219948)

**Please note:** All products are "FOR RESEARCH USE ONLY. NOT FOR USE IN DIAGNOSTIC PROCEDURES"

### Our Abpromise to you: Quality guaranteed and expert technical support

---

- Replacement or refund for products not performing as stated on the datasheet
- Valid for 12 months from date of delivery
- Response to your inquiry within 24 hours
- We provide support in Chinese, English, French, German, Japanese and Spanish
- Extensive multi-media technical resources to help you
- We investigate all quality concerns to ensure our products perform to the highest standards

If the product does not perform as described on this datasheet, we will offer a refund or replacement. For full details of the Abpromise, please visit <https://www.abcam.com/abpromise> or contact our technical team.

### Terms and conditions

---

- Guarantee only valid for products bought direct from Abcam or one of our authorized distributors